

TABLE OF CONTENTS

FOREWORD – COUNCIL CHAIR	3
CHIEF EXECUTIVE’S REPORT	5
WHITIREIA COMMUNITY POLYTECHNIC DIRECTORY	10
SUMMARY OF KEY ACHIEVEMENTS – 2006	11
HIGHLIGHTS OF 2006	12

SERVICE PERFORMANCE STATEMENTS

STATEMENT OF SERVICE PERFORMANCE	14
PERFORMANCE MEASURES DEFINITIONS	24

FINANCIAL STATEMENTS

STATEMENT OF ACCOUNTING POLICIES	25
STATEMENT OF FINANCIAL PERFORMANCE	29
STATEMENT OF MOVEMENT IN EQUITY	30
STATEMENT OF FINANCIAL POSITION	31
STATEMENT OF CASH FLOWS	32
RECONCILIATION OF THE NET SURPLUS ON OPERATIONS WITH THE NET CASH FLOWS FROM OPERATING ACTIVITIES	33
STATEMENT OF COMMITMENTS	34
STATEMENT OF CONTINGENT LIABILITIES	35
NOTES TO THE FINANCIAL STATEMENTS	36
MANAGEMENT STATEMENT	44
REPORT OF THE AUDITOR-GENERAL	45

APPENDICES

APPENDIX 1 SPECIAL SUPPLEMENTARY GRANTS	47
APPENDIX 2 PROGRAMME ADVISORY COMMITTEES	48
APPENDIX 3 QUALITY REINVESTMENT PROGRAMME – STAGE 2	55



FOREWORD – COUNCIL CHAIR

Dennis Sharman

As Chair of the Council, it gives me great pleasure to introduce the 2006 Annual Report of Whitireia Community Polytechnic.

2006 was a year of change for Whitireia with the well-earned retirement of our Chief Executive Deirdre Dale. Deirdre was on the staff of Whitireia for sixteen years and Chief Executive for the last ten. Deirdre made a huge contribution to Whitireia, the tertiary sector, and the many communities that Whitireia serves. On behalf of Council, I wish Deirdre all the best in her retirement.

In April, the Council appointed Don Campbell, previously Chief Executive of Tai Poutini Polytechnic in Greymouth, as the new Chief Executive of Whitireia to commence in September. Don has a sound understanding of the strategic changes taking place at a regional and political level. With a proven track record of sound financial management and an ability to establish strategic partnerships with the local community, Don has already made a significant contribution to Whitireia during his short time with us.

Whitireia Council membership has remained stable over the last few years with the addition of only one new Councillor in 2006, Barbara Marshall, who joined the Council in July. Ours is a very strong and passionate Council, always looking at the best interests of the students, staff and the communities that we serve. Thank you to all Councillors for contributing your knowledge, wisdom and time to Whitireia and especially to Suzanne Snively for her support as Deputy Chair.

Financially 2006 has been a disappointing year. Equivalent Full Time Student (EFTS) numbers were down for both international and domestic students. Along with significant external factors, this has led to a financial deficit of \$1.5 million the first in our history. Like all polytechnics, Whitireia has been affected by the significant changes to tertiary funding over the last two years as TEC look at the implementation of the tertiary reforms.

The funding changes to the sector will continue to make it difficult for Whitireia in 2007 as we strive to offer the foundation and lower level courses at their current levels. This has the potential to undermine our ability to successfully deliver the educational outcomes to our communities that they desperately need.

The new funding system will be implemented in 2008. The shaping of the reforms has created a number of challenges for TEC and the sector, and has created a significant additional workload for CEOs in the ITP sector. Nevertheless, Whitireia is well placed to continue to deliver quality education to its communities. The Council will do all it can to ensure that the needs of the Whitireia communities continue to be met throughout the implementation of the reforms and beyond.

Council's capital development programme has been on hold during 2006 while the ongoing tertiary funding situation became clearer. The next stage of the campus development programme is the Health Education and Social Sciences building and Council has indicated that this proposed redevelopment will be reviewed again in early 2007.

In many ways, the highlight of the year continues to be the graduation ceremonies. These are special events that mark the continued success of our students, tutors and support staff. It is at these events that we get to see how much we have all contributed to the lives and success of the students.

While 2006 has in some areas not been our best year, Whitireia continues to be in a sound position. We have excellent staff and a very supportive community. Despite challenges with the sector reforms, Whitireia is still well placed to deliver quality vocational courses and educational outcomes that will make a difference to students' employment opportunities and their lives.

On behalf of Council, I would like to thank Deirdre Dale and Don Campbell for their leadership in 2006. I would also like to thank the management team and the staff for their continued support and dedication.

Congratulations to all of the students who successfully completed their courses in 2006. Pursue your knowledge and careers, remember life long learning is a must and Whitireia will always be here to assist you.

Dennis Sharman
Council Chair





CHIEF EXECUTIVE'S REPORT

Don Campbell

Tēnā koutou katoa

It gives me great pleasure to report on the performance of Whitireia Community Polytechnic for 2006.

It was a further outstanding year of achievement and consolidation which included providing quality tertiary education to over 4000 equivalent full time students (EFTS) generating income of over \$42 million and, most importantly, meeting a wide range of tertiary learning needs for the region and communities which Whitireia serves.

2006 marked the celebration of 20 years of highly successful operation for Whitireia, the retirement in August of Deirdre Dale, Chief Executive for the previous ten years and my arrival as new Chief Executive in September.

I wish to acknowledge the superb contribution Deirdre has made to the development and evolution of Whitireia. It is one of the outstanding New Zealand Polytechnics. The growth, success and special character were all enhanced by Deirdre's leadership.

I also note with great sadness, the passing of Ian Dale, Deirdre's husband, a short time after her retirement. Ian - Haere, haere, haere.

20TH ANNIVERSARY CELEBRATIONS

The 20th anniversary of Whitireia was celebrated in Te Kete Wānanga, the award winning library and learning centre opened in 2005 and attended by over 400 guests. It provided an outstanding showcase of our facilities, staff and students. The occasion featured the talents of the organisation, its special character in performance, cultural awareness, provision of food and entertainment and was a clear demonstration of the progress that has been made in such a relatively short period of time.

From small but positive beginnings in 1986, Whitireia is now a vibrant and well-known influence in New Zealand tertiary education, in its region and increasingly internationally. The position and regard it now holds in the tertiary sector is a tribute to all staff and the leadership shown by previous and current Council and Chief Executives.

During the first 20 years there have been four Chairs of Council, Tino Meleisea, Margaret Faulkner (also Chair of the Institutes of Technology and Polytechnics New Zealand (ITPNZ) in 2000), Chris Kirk-Burnnand, and Dennis Sharman, and two Chief Executives, Turoa Royal and Deirdre Dale (also Chair of ITPNZ in 2004).

When looking back over the spectacular achievements of the first 20 years, it is also interesting to look forward and visualise where Whitireia might be at the end of the next 20 years. There is something of immeasurable and indefinable value for a community in having its own tertiary learning institution and this is embodied in the relationship Whitireia has with its community. The challenge is for the achievements of the first 20 years to be qualitatively matched or exceeded over the next 20 years and for government education policy to recognise and support this.

PERFORMANCE IN 2006 The results for 2006 showed a small reduction in student numbers and income due partly to changing government policy with respect to tertiary education. International student numbers reduced, part of a national and international picture significantly influenced by changes in the Republic of China's education policies.

In 2006, there were 4065 EFTS achieved, some 400 less than 2005. Some of this reduction was a result of a smaller allocation of adult and community education funding. This was due to a change in government policy away from encouraging participation, for which community education funding is a significant contributor. Courses are often at entry level and encourage learners to enter tertiary education.

Revenue at \$42.3 million was similar to 2005. However, expenditure was greater than 2005 resulting in a deficit for the year of \$1.6 million, the first in Whitireia history. Cost per EFTS increased by approx \$1400, which was due to a combination of increasing cost and reducing volume of EFTS, and this is a matter which will need to be addressed during 2007.

Whitireia is recognised as a leading provider of tertiary education for culturally diverse communities and this is reflected in the proportion of 21.1% of domestic students who are Māori and 21.8% Pacific students. Both of these statistics exceeded our objectives. Completion rates for Māori and Pacific students were 76.2% and 72.1% respectively. Surveys of graduates indicated that six months after graduation, 97% of graduates were in employment or in further study.

A survey of employers indicated a high level of satisfaction with Whitireia graduates on a variety of measures. Student satisfaction with programmes, from 1827 responses across 97 programmes, indicated that 91% of students were very satisfied with the overall learning experience. In terms of overall student success, in 2006 a total of 83.7% of all students completed courses leading to a qualification. 71.4% of students enrolled in courses leading to a qualification were successful in achieving that qualification.

COLLABORATION Significant progress was made in collaborating with a variety of partners in 2006. Foremost amongst collaborative activities was the formation of the Wellington Regional Polytechnic Federation (WRPF) consisting of Whitireia, Wellington Institute of Technology (WelTec) and The Open Polytechnic of New Zealand (TOPNZ). Funding was provided by the Tertiary Education Commission (TEC) to each institution and several projects were undertaken. One of these involved looking at programmes where collaboration might provide greater benefit in the form of increased provision in the region. Another project looked at the issues which both enabled and disabled greater collaboration.

There were regular meetings of the governance group consisting of Chairs and Chief Executive of the three institutions as well as monthly meetings of the three Chief Executives. In 2007, it is expected that further collaborative projects will be undertaken by the three parties assisted by funding from TEC under the Quality Reinvestment Programme.

Collaboration also occurred in the provision of the Bachelor of Health Science (Paramedic) degree with the Wellington Free Ambulance Association (WFA). 2006 saw the successful completion of this degree programme by its first graduates. A number of other successful collaborative ventures continue to operate with various health providers at the Postgraduate level including the Royal New Zealand Plunket Society, Hospice New Zealand, Medtra New Zealand as well as the Clinical Training Agency of the Ministry of Health.

We also work collaboratively with various industry providers including Foodstuffs Wellington Co-operative Society Limited in the provision of First Line Management.

An outstanding example of collaboration and our commitment to Pacific Island communities is the relationship established with Tupou High School in Tonga. Programmes are provided in Tonga through Tupou Tertiary Institute taught under the Whitireia quality management system and accreditation and curricula with advice and assistance from our staff. In 2006, this amounted to 192 EFTS. Additionally, 18 students proceeded from Tonga to complete qualifications in New Zealand on a cost recovery basis.

During 2006, research was undertaken by the Wellington Tertiary Education Cluster which comprises the three Universities and three Polytechnics of the region: Victoria University Wellington, Massey University Wellington, Whitireia Community Polytechnic, Wellington Institute of Technology, the Open Polytechnic of New Zealand and the University of Otago Wellington School of Medicine and Health Sciences to determine the economic impact of tertiary education in the Greater Wellington Region.

The added value from the Tertiary Education Cluster expanded by 67% in the years from 2000 to 2005 and in 2005 was 4% of the region's economy. Education is an essential building block of the economy and also of the character and fabric of the communities we live in. At the launch of the research demonstrating the value add of tertiary education to the Wellington Region, it was reported to be worth \$1.6 billion.

SPECIAL CHARACTER During 2006, considerable progress was made on the development of our special character. This included the receipt of an important specialist collection of Pacific resources for the Library from the multicultural resource centre in Newtown. The Honourable Russell Marshall, who lives in our area also contributed his collection from 1990 of the Journals of the Polynesian Society and other related resource material.

A group of interested staff are seeking to develop a "creative depiction" of the Whitireia special character. This includes whakatauki, stories and pictures. The development of a Performing Arts facility in Porirua has also been further advanced during 2006 with the establishment of a committee consisting of Whitireia, Porirua City Council, Ngāti Toa and the Community Arts Council. The intention is, through a Trust, to fundraise for the construction of a Performing Arts Facility for the community, which would most likely be placed on Whitireia and Council land in Wineera Drive.

TERTIARY REFORMS 2006 saw further development in the New Zealand tertiary education system with significant changes to the funding system expected to take place in 2008. The Tertiary Education Strategy (TES) was revised and priority outcomes were identified as “increasing educational success for young New Zealanders, increasing literacy and numeracy levels for the workforce, increasing achievements advanced trade and technical and professional qualifications, and improving research connections and linkages”.

The intent of these priority outcomes is to link and assist with the economic transformation of New Zealand. The Whitireia Council has indicated strong support for the reforms and believes it is well placed to meet the intent provided appropriate resources are allocated to achieve this. Whitireia does have a record of success in the key outcome areas and believes there is an opportunity to further enhance the excellent work that has been occurring particularly with Māori and Pacific communities and in the communities of Porirua, Kapiti and Wellington.

A cautionary comment however, is that there is significant need in our community for entry level to tertiary education. In the areas of foundation, literacy and numeracy where success leads on to success at higher levels, Whitireia has demonstrated it has considerable capability.

RESEARCH During 2006, the nursing centre of learning celebrated 20 years by the publication of Issue thirteen of the Whitireia Nursing Journal which included a foreword by Turoa Royal and was edited by Margaret Faulkner.

This celebratory issue of the Whitireia Nursing Journal contained informative and sometimes personal accounts of staff and student experiences. It offered stimulating reading on topics such as why young people choose nursing as a career, the Postgraduate Primary Health Care Programme, Immunisation outreach and personal reflections.

The Whitireia Research Report 2006 records an impressive range of research outputs achieved by Whitireia staff and an increase on the total achieved in 2005. There are a significant number of creative outputs, participation in conference presentations and publications in conference proceedings by staff in all areas of the polytechnic.

Other outputs include theses, journal articles and book chapters, highlighting the continued development of academic achievement. The report profiles six staff researchers who have made a significant contribution to research, nationally and internationally and includes one emerging researcher actively involved in the research of Pacific health and education.

LOOKING AHEAD In looking to the future, a significant challenge will be to address declining student numbers and profitability and to address issues related to our Institute experiencing its first deficit ever in 2006. Additional challenges will be the changes to the tertiary funding system and significant other changes in government policy with respect to the provision of tertiary education.

The challenge of ensuring a campus redevelopment programme is maintained, and that new buildings continue to be constructed to replace the large number of prefabricated buildings will be an important focus. How the campus master plan might be funded over the next 5 to 10 years will also be a significant challenge for the institution.

The development of the Whitireia special character, and identifying and further developing centres of excellence within the Polytechnic and its community, sustaining provision in the Kapiti area and in central Wellington will provide specific challenges in the new funding environment.

CONCLUSION I wish to conclude by thanking all staff for their superb efforts in 2006, for rising to challenges and for supporting our students and each other.

My special thanks to Directorate for responding to the changing external environment and preparing the organisation for the changes which lie ahead. We are in good shape but do have a lot of work to do both in helping shape the future of the sector and in preparing the organisation for the changes.

Finally I wish to thank Council for their strong and clear leadership and excellent understanding of their community and the tertiary environment and the place Whitireia has in both. My special thanks to Chairman Dennis Sharman and Deputy Chair Suzanne Snively for their strong support, guidance and leadership of the institution known as Whitireia.

No reira, tēnā koutou katoa.

Don Campbell
Chief Executive

WHITIREIA COMMUNITY POLYTECHNIC DIRECTORY

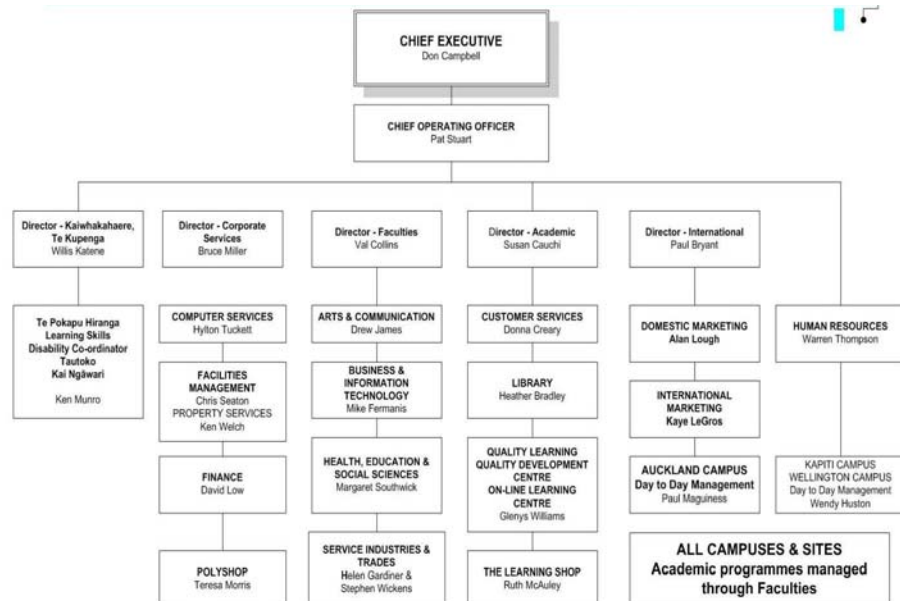
COUNCIL

Dennis Sharman Council Chair	Co-opted
Suzanne Snively Deputy Chair	Ministerial
Don Campbell	Chief Executive
Aka Arthur	Ngāti Toa
Heather Bradley	Allied Staff
Gregory Fortuin	Co-opted
Carmel Haggerty	Academic Staff
Barbara Marshall	Ministerial
Caroline Mareko	New Zealand Council of Trade Unions
Chris Moses	Student Representative
Allan Nichols	New Zealand Employers & Manufacturers Association
Caren Rangi	Ministerial
Ron Wilkinson	Ministerial

DIRECTORATE

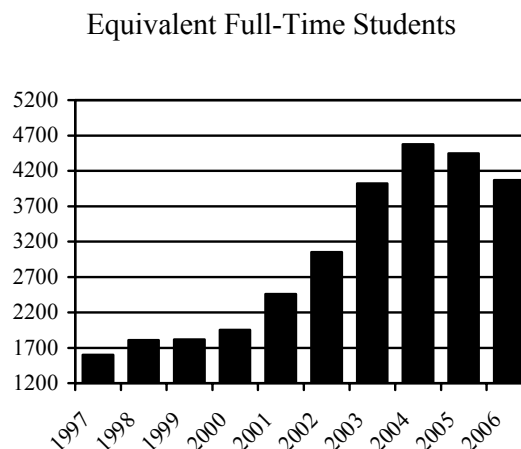
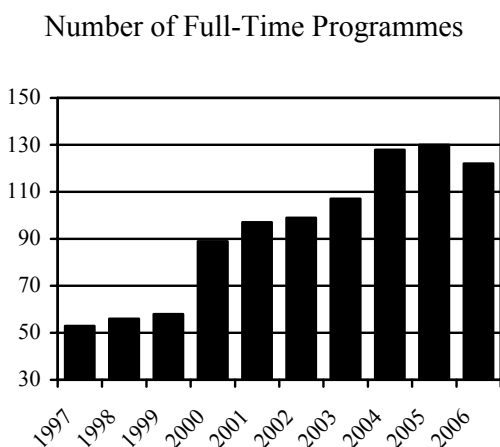
Don Campbell MBS (Hons) BA (Econ) DipTchg FNZIM	Chief Executive
Pat Stuart BA	Chief Operating Officer
Susan Cauchi MA (Hons) Dip NZLS	Director, Academic
Valerie Collins MEd Admin Dip Tchg Dip TESL	Director, Faculties
Bruce Miller CA BA DipTchg	Director, Corporate Services
Willis Katene MMMgt BA (Hons) Dip ART	Director, Te Kupenga
Paul Bryant DEA (Automatique) ME (Elect) MNZIE	Director, International

ORGANISATION CHART

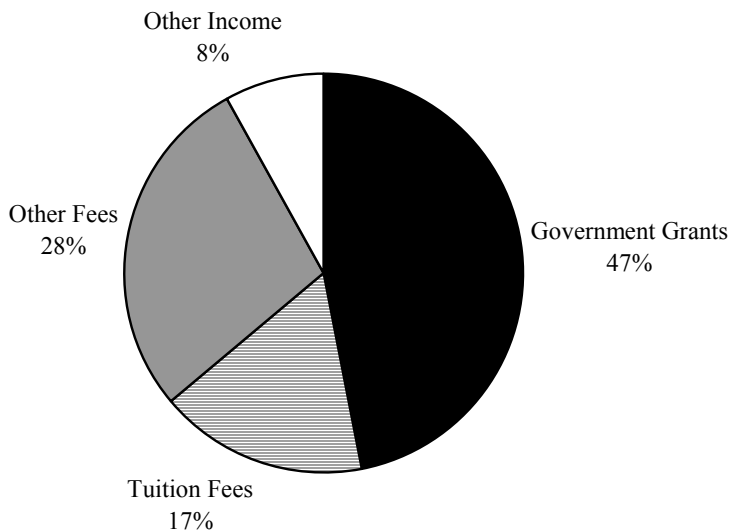


SUMMARY OF KEY ACHIEVEMENTS - 2006

INSTITUTIONAL GROWTH



SOURCE OF FUNDS



GRADUATE PERFORMANCE

Student Success Rate:

Target	65%
Actual	71%

Graduate Destination:

Moved to Employment	65%
Further Education	32%
Improved Career Prospects	97%

Employer Satisfaction with Graduates:

Level of Skills	100%
Level of Knowledge	100%
Relevance of Qualification	97%

PROGRAMME QUALITY

Student Satisfaction with:

Overall Programme	91%
Standard of Teaching	92%
Useful Content	98%

All programmes taught have NZQA/ITP Quality/Academic Board approval/accreditation.

All programmes are supported and monitored by external stakeholders

All students and staff are encouraged to become knowledgeable about the Treaty of Waitangi

HIGHLIGHTS OF 2006

- We celebrated 20 years since establishment with a wonderful event attended by some 400 supporters.
- The first cohort of the Bachelor of Nursing (Pacific) completed, graduated and passed the Nursing State Final Exam.
- The Institutional Academic Audit was successfully completed. An external audit team from ITPQ audited 12 academic programmes at different levels, from foundation certificates through to postgraduate programmes. The audit team also investigated institutional processes and visited all Whitireia campuses. The audit team found that Whitireia successfully meets all ITPQ quality standards. Whitireia has gained quality-assured status for the next four years.
- The Whitireia Community Polytechnic Profile 2007-2009 was approved unconditionally by TEC. This confirmed the polytechnic's Government EFTS funding and additional funding such as Business Links and Special Supplementary grants.
- A Legal Executive Certificate course was offered for the first time with outstanding success including one student achieving a top mark of 98% in a New Zealand Law Society exam.
- There was a record number of Information Technology projects in the third year of the Bachelor of Information Technology degree. Graduates continue to be highly regarded and get jobs quickly.
- The NZIM Certificate in Management was taken out to the community in Porirua East and in Waitangirua. A number graduated and have moved into study at a higher level in the NZ Diploma in Business.
- Successful delivery of the NZ Dip Bus and NZIM programmes in Tonga at Tupou High School was maintained. Despite mass riots, the school remained intact and students completed end of year exams.
- Growth occurred in our Trades programmes along with success for students in moving into apprenticeships.
- Significant interest was experienced in Road Transport programmes including an increase in contract work with the New Zealand Police and External Affairs staff preparing for overseas placements as well as a WINZ contract.
- Hospitality, Tourism and Catering programmes gained excellent results in the Wellington Culinary Fare competition including gold and silvers, and the Kapiti School of Culinary Art was launched.
- Beauty Therapy students gained winner and runner-up in the National makeup competition and the Kapiti School of Beauty and Hairdressing was launched.
- A Floristry student was first runner-up in a regional floristry apprenticeship competition.
- Office Systems held a graduation in Rarotonga with the Cook Islands Prime Minister present. The Business Administration and Computing programme saw 36 Cook Island students gain success in 2006. We hosted a successful National Business Administration Conference in Wellington entitled Tuituia Rangarangahia.
- More STAR courses for secondary students in 2006 will likely result in significant additional enrolments in 2007.

- A Marketing review was commenced in December 2006.
- Whitireia maintained its position as the polytechnic with the most international EFTS (after UNITEC). This was despite a difficult year in International as the Chinese student market continued to fall significantly throughout New Zealand and Australia.
- We developed staircasing relationships with overseas tertiary institutions in particularly the Republic of China, Korea and Japan. These will start to come to fruition in 2007 with commonly, students studying for one year at home before staircasing to diploma and/or degree completion at Whitireia.
- Several new international markets were explored in 2006, in particular Indonesia, India and the Philippines.
- We are developing a strong niche market for teacher education in Thailand, which is Education New Zealand's choice of "in-depth" markets.
- The Auckland Campus has developed a reputation for providing for students with English as a second language. Despite the continuing New Zealand - wide downturn in international students we still managed to enrol 450 international EFTS.
- Hospitality is thriving at the Auckland Campus, with all students spending their final diploma semester in a full-time, paid internship with one of the ten major hotels supporting the programme.
- A decision was taken to relocate the automotive programmes from old premises in Prosser St to the Mohuia Crescent campus which will be upgraded.
- Council and senior Management combined for a very productive strategic planning workshop with Janice Shiner (CEO TEC) attending as guest speaker.
- A review of the Auckland campus was conducted.
- A review of the Campus master plan was initiated.
- A Social Work research symposium was held at Porirua and an Early Childhood Research conference with 200 participants was hosted.

STATEMENT OF SERVICE PERFORMANCE

GOAL 1

To extend the range, relevance and quality of learning opportunities offered to students to enhance their potential particularly for employment, locally, nationally and internationally.

OBJECTIVE 1

PERFORMANCE

All programmes offered to students meet the quality standards required for recognition, approval and accreditation

Performance Measure: All qualifications taught each year gain recognition, approval and accreditation as required by the Academic Board and ITP Quality.

This objective was achieved. In 2006, an ITP Quality Institutional Academic Audit confirmed the quality assured status and institutional accreditation for Whitireia until 2010.

All qualifications taught in 2006 had recognition, approval and accreditation as required by the Academic Board, ITPQ and NZQA.

The following new qualifications were approved in 2006:

- Certificate in Professional Teaching Practice (English)
- Certificate in Preparation for Postgraduate Studies
- Certificate in Information Technology (Applications) and (PC Support)
- Diploma in Management (Not for Profit Sector)
- National Certificate in First Line Management
- Certificate in Applied Arts (Music)
- Diploma in Early Childhood Education

The Academic Board also approved a large number of significant changes to programmes, while numerous minor changes to programmes were approved by the Academic Standards Committee under delegated authority from the Academic Board.

OBJECTIVE 2

PERFORMANCE

Teaching and allied staff are supported to improve their teaching qualifications and professional competence

Performance Measure:

- *At least 95% of current full-time teaching staff complete at least 10 days of staff development annually to improve their adult teaching qualifications or update professional competence*
- *At least 95% of full-time allied staff complete at least two days of staff development annually to update their professional competence*

The objective for full-time teaching staff was not achieved. Ninety percent (90%) of full-time teaching staff completed at least 10 days of professional development to improve adult teaching qualifications and update professional competence. Other staff completed less than 10 days of staff development.

The objective for full-time allied staff was achieved. Ninety-eight percent (98%) of allied (non-teaching) staff completed at least two days of staff development to update their professional competence.

OBJECTIVE 3

PERFORMANCE

The relevance of qualifications is supported and monitored by external stakeholders

Performance Measure:

- Industries, businesses, iwi, community groups and professional bodies, as appropriate, are consulted in the development of all new qualifications approved by the Academic Board
- For all teaching programmes, there is an Advisory Committee which monitors the relevance of current programmes

The objective for appropriate consultation in the development of all new qualifications was achieved. All new programmes are supported and monitored by external stakeholders. Industry, business, iwi, community groups and professional bodies are consulted in the development of new qualifications approved by the Academic Board.

The objective for advisory committees for all teaching programmes was achieved for all but three programmes. A total of forty Programme Advisory Committees met during 2006. Membership consisted of representatives of relevant industries, businesses, iwi, community groups and professional bodies. Three programme areas (Community Services, Youth & Community and Te Ohu Kokiri) did not hold formal Advisory Committee meetings, but staff maintained a variety of informal links with stakeholders.

See Appendix 2.

OBJECTIVE 4

PERFORMANCE

Graduates progress to employment or further education

Performance Measure: Six months after graduation, at least 80% of graduates surveyed are either employed or continuing with further education

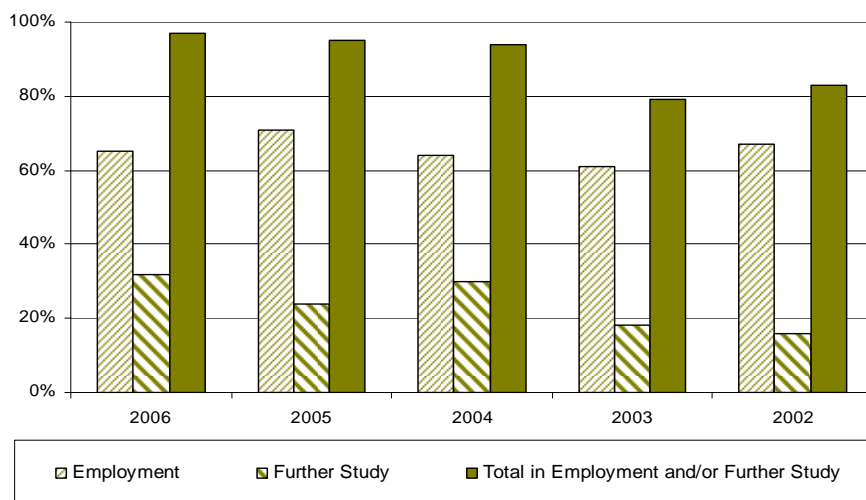
This objective was achieved. The 2006 Graduate Survey was carried out nine months after graduation. Of students who responded, 97% were in employment or were studying. In 2005 and 2006, Whitireia used the ITPNZ Graduate Survey questionnaire, with the result that information from the survey was a little different from previous years.

Table 1: Level of Employment and Further Education of 2005 Graduates

	2006	2005	2004	2003	2002
Employment	65%	71%	64%	61%	67%
Further Education	32%	24%	30%	18%	16%
Total in Employment and/or Further Education	97%	95%	94%	79%	83%

(Target 2006 - 80%)

Figure 1: Graduates Employed or Undertaking Further Study



OBJECTIVE 5

PERFORMANCE

Employers are satisfied with graduate skills

Performance Measure: At least 85% of employers surveyed each year are satisfied or very satisfied with the suitability of graduates

This objective was achieved. In October 2006, a survey sought employers’ views regarding the suitability of Whitireia graduate skills. An employer satisfaction rating was used with response choices ranging from “very satisfied” to “very dissatisfied”.

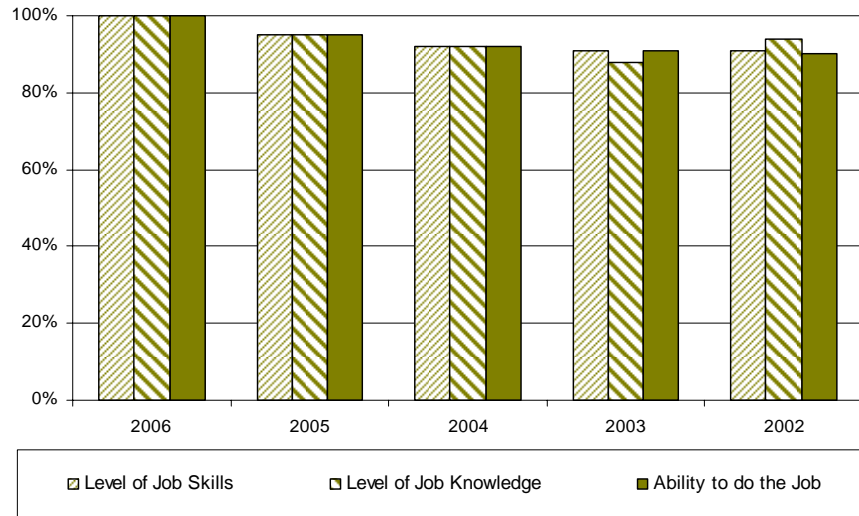
Employers’ responses indicated a high level of satisfaction with Whitireia graduates’ proficiency, with the target of 85% being met for all criteria.

Table 2: Employers’ Satisfaction with Graduate Skills

	2006	2005	2004	2003	2002
Relevance of Qualification	97%	93%	85%	91%	90%
Level of Job Skills	100%	95%	92%	91%	91%
Level of Job Knowledge	100%	95%	92%	88%	94%
Ability to do the Job	100%	95%	92%	91%	90%
Attitude to the Job	100%	92%	100%	93%	97%
Work Ethics	100%	94%	100%	93%	100%
Work with Minimal Supervision	100%	94%	92%	91%	87%
Work Well as Team Member	100%	94%	85%	91%	87%

(Target 2006 - 85%)

Figure 2: Employers’ Satisfied with Graduate Skills



OBJECTIVE 6

PERFORMANCE

Applied research supports teaching and learning

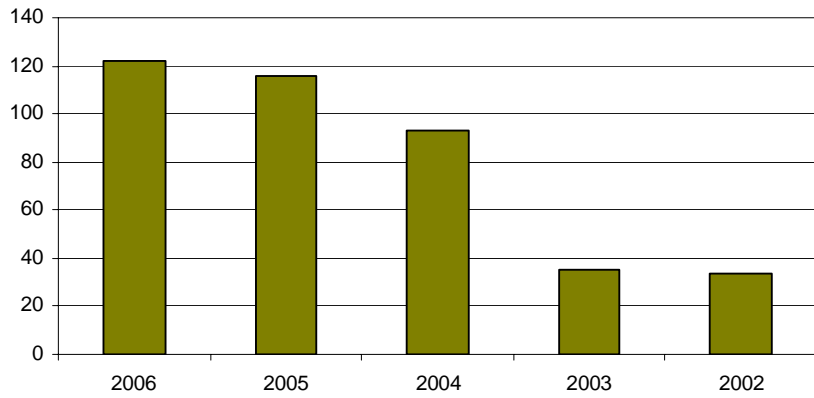
Performance Measure: Research outputs in relevant disciplines, including publications, articles in journals, and public exhibitions, are produced as follows: at least 30 in 2006, 40 in 2007 and 50 in 2008

This objective was achieved. One-hundred-and-twenty-two staff research outputs were reported in 2006. This included completed research publications, reports, conference papers and creative installations. This figure of 122 research outputs represents a continuing increase in research, compared with 116 research outputs in 2005, 93 research outputs in 2004 and only 35 completed research projects in 2003.

Table 3: Summary of Research Initiatives in 2006

Publications	42
Conference Contributions	38
Creative Outputs	42
TOTAL	122

Figure 3: Research Outputs 2002-2006



GOAL 2

To focus on the success of every student through flexible learning delivery, technology supported learning and quality educational support services.

OBJECTIVE 7

PERFORMANCE

Students complete courses leading to a qualification

Performance Measure: 80% of all students enrolled in courses leading to a qualification complete their courses

This objective was achieved: In 2006, a total of 83.7% of all students completed courses leading to a qualification according to official TEC figures. The TEC figures do not distinguish between international and domestic students, but internal statistics showed that international students were more likely to complete courses.

Table 4: Student Completion Rate

	Target	2006	2005	2004	2003	2002
Student Completion Rate	80%	83.7%	84.4%	86.8%	88.7%	87.9%

OBJECTIVE 8

PERFORMANCE

Students are successful in courses leading to a qualification

Performance Measure: 65% or more of students who enrol in courses leading to a qualification are successful

This objective was achieved. 71.4 % of students who enrolled in courses leading to a qualification were successful in 2006.

Table 5: Student Success Rates

	Target	2006	2005	2004	2003	2002
Student Success Rate (as % of enrolments)	65%	71.4%	72.7%	73.1%	70.3%	70.4%

OBJECTIVE 9

PERFORMANCE

Students evaluate their overall learning experience positively

Performance Measure: 85% or more of students surveyed are “satisfied” or “very satisfied” with the overall quality of their learning programmes

This objective was achieved: A total of 91% of students reported satisfaction with their overall learning experience in 2006.

The 2006 Student Satisfaction Survey was carried out across the polytechnic, and included 97 programmes. A total of 1,827 students responded.

A total of 91% of surveyed students reported that they were “very satisfied” or “satisfied” with their overall learning experience. This exceeded the target of 85% for overall programme satisfaction.

Written comments from students were used to gain clarity and to direct possible corrective action. For particular programmes where targets were not met, Faculty Deans were required to prepare an action plan for improving student satisfaction within the programme.

Table 6: Student Satisfaction with Programmes

Teaching programmes	Students Satisfied or Very Satisfied				
	2006	2005	2004	2003	2002
Well organised	84%	88%	84%	82%	81%
Useful content	98%	98%	91%	90%	91%
Standard of teaching	92%	94%	86%	85%	87%
Fair & relevant work for assessments	91%	93%	87%	82%	82%
Helpful feedback on work	94%	95%	86%	85%	87%
Overall Programme Satisfaction	91%	95%	89%	87%	88%
Overall Learning Experience	91%	95%	89%	87%	88%
<i>(Target 2006 – 85%)</i>					

OBJECTIVE 10

PERFORMANCE

Students evaluate learning support services positively

Performance Measure: At least 70% of students are “satisfied” or “very satisfied” with the Library, Customer Services, Learning Skills and Student Services

This objective was achieved. All service areas met the 70% target. Table 7 shows that in most cases satisfaction ratings have increased significantly since 2004.

Table 7: Student Satisfaction with Services

Learning Support Services	Students Satisfied or Very Satisfied				
	2006	2005	2004	2003	2002
Library	87%	87%	78%	87%	90%
Customer Services	84%	81%	79%	87%	91%
Learning Skills	77%	77%	77%	80%	83%
Student Services	82%	79%	74%	74%	79%
<i>(Target 2006 - 70%)</i>					

GOAL 3

To be recognised as a leading provider of tertiary education for multicultural communities and in achieving equity of educational and employment opportunities.

OBJECTIVE 11

PERFORMANCE

Traditionally under-represented groups such as Māori and Pacific students participate in tertiary education at Whitireia

Performance Measure:

- *The proportion of Māori students from local communities in Porirua, Kapiti and Wellington is maintained or increases*
- *The proportion of Pacific students from local communities in Porirua, Kapiti and Wellington is maintained or increases*

Targets (from 2006 Department of Statistics Census):

<i>Māori</i>	<i>11%</i>
<i>Pacific</i>	<i>8%</i>

The objective was achieved: In 2006, 21.1% of domestic students were Māori, compared with a target of 11%. 21.8% of domestic students were Pacific students, compared with a target of 8%

Table 8: Ethnicity Profile for 2006 Domestic Student Enrolments

Students		2006	2005	2004	2003	2002
	Target	Actual				
Māori	11.0%	21.1%	19.8%	24.1%	16.4%	18.7%
Pacific	8.0%	21.8%	20.7%	21.4%	24.3%	22.8%

OBJECTIVE 12

PERFORMANCE

Traditionally under-represented groups such as Māori and Pacific students move towards achieving Whitireia targets for course completions

Performance Measure:

- *80% of Māori students enrolled in courses leading to a qualification complete their courses*
- *80% of Pacific students enrolled in courses leading to a qualification complete their courses*

The objective was not achieved: The polytechnic's target of an 80% completion rate was not achieved by Māori and Pacific students, who had completion rates of 76.2% and 72.1% respectively. As official TEC completion figures do not distinguish by ethnicity, we have used internal statistics in the following table.

Table 9: Ethnicity Profile for Student Completion Rates

	2006	2005	2004	2003	2002
Māori	76.2%	79.4%	77.6%	85.2%	82.5%
Pacific	72.1%	74.9%	84.1%	86.5%	87.3%
<i>(Target 2006 - 80%)</i>					

OBJECTIVE 13**PERFORMANCE**

Traditionally under-represented groups such as Māori and Pacific students move towards achieving Whitireia targets for success

Performance Measure:

- 65% of Māori students enrolled in courses leading to a qualification successfully pass their courses (2006, 2007, 2008)
- 65% of Pacific students enrolled in courses leading to a qualification successfully pass their courses (2006, 2007, 2008)

This objective was not achieved. The polytechnic's target of a 65% success rate was not achieved by Māori and Pacific students, who had success rates of 57.9% and 57.6 % respectively. As official TEC completion figures do not distinguish by ethnicity we have used internal statistics in the following table.

Table 10: Ethnicity Profile for Student Success Rates

	2006	2005	2004	2003	2002
Māori	57.9%	58.6%	55.5%	64.2%	63.1%
Pacific	57.6%	57.9%	65.9%	61.3%	56.9%
<i>(Target 2006 - 65%)</i>					

OBJECTIVE 14**PERFORMANCE**

Demonstrable progress is made towards achieving equal educational opportunities

Performance Measure: The Equal Educational Opportunity annual plan is achieved

This objective was achieved. Significant progress was made in achieving the Equal Educational Opportunity annual plan in 2006, although the outcomes of Special Supplementary Grant objectives for Māori and Pacific student success were not achieved this year. The Equal Educational Opportunities Committee met three times during 2006, and equal educational opportunities initiatives were promoted throughout the polytechnic.

OBJECTIVE 15**PERFORMANCE**

Demonstrable progress is made towards achieving equal employment opportunities.

Performance Measure: The Equal Employment Opportunity annual plan is achieved

This objective was achieved. During 2006, the main focus was on assessing the viability of becoming a member of the EEO Trust and reviewing or renewing EEO Networks. The Committee recommended that Whitireia becomes a member of the Trust.

GOAL 4

To enhance the long-term financial viability of the Polytechnic through sound financial management, effective administrative systems and managed entrepreneurial activities.

OBJECTIVE 16

PERFORMANCE

The number of equivalent full-time students is maintained or increased each year

Performance Measure: The total number of EFTS equals or is greater than the total number of EFTS in the previous year

This objective was not achieved. In 2006, the polytechnic achieved 4,065 EFTS, which was a 9.7% decrease on 2005 figures. Government-funded EFTS were 3,030.60 EFTS, which was a decrease of 7.6% on 2005 figures.

Table 12: Actual Equivalent Full-time students (EFTS)

	2006	2005	2004	2003	2002
			Actual		
Arts & Humanities	1,280.96	1,723.51	1,652.83	1,633.59	1,076.24
Business & Law	894.76	811.70	704.38	667.77	602.14
Health Professions	441.94	406.23	381.75	191.50	188.50
Science & Applied Science	40.06	26.67	28.16	41.54	42.95
Teacher Education	107.18	86.25	112.02	87.50	77.21
Technology	18.62	17.28	32.95	31.80	12.10
Trades Training	247.08	166.19	192.06	170.66	183.56
Sub Total (TEC)	3,030.60	3,237.83	3,104.17	2,824.35	2,182.70
International	835.53	1,055.79	1,299.24	989.25	624.06
TEC Contracts	53.99	53.50	44.88	86.03	82.97
STAR	36.43	32.01	30.39	28.86	10.51
Other	109.07	80.04	90.71	94.26	148.04
Total	4,065.62	4,459.17	4,569.39	4,022.75	3,048.28

OBJECTIVE 17

PERFORMANCE

Sound and prudential financial management is exercised

Performance Measure: The following financial performance measures are achieved

	2006	2005	2004	2003	2002
			Actual		
Revenue (millions)	\$42.3	\$42.0	\$44.0	\$38.8	\$28.8
Surplus/Deficit (\$ in Millions)	(\$1.6)	\$0.4	\$6.5	\$6.2	\$4.1
Surplus/Deficit (% Income)	(3.7%)	1.0%	14.9%	15.9%	14.3%
Return on Net Assets (%)	(3.5%)	0.8%	13.7%	19.1%	15.2%
Revenue from TEC (\$ in Millions)	\$19.8	\$20.4	\$19.5	\$16.5	\$12.8
Revenue from TEC (% of Total Revenue)	46.8%	48.7%	44.3%	42.7%	44.4%
Cost per EFTS	\$10,798	\$9,324	\$8,193	\$8,112	\$8,064
Working Capital Ratio	1.28	1.33	1.61	1.10	1.72
Net Assets per EFTS	\$11,228	\$10,678	\$10,484	\$8,028	\$8,514
Net Operating Cash Flow (\$ in Millions)	\$3.1	\$2.5	\$9.3	\$8.7	\$8.4

TREATY OF WAITANGI

In addition to the achievement of these strategic goals Whitireia is committed to demonstrating leadership in the Tertiary Education Sector in implementing the Treaty of Waitangi

OBJECTIVE 18

PERFORMANCE

Whitireia students are encouraged to become knowledgeable about the Treaty of Waitangi

Performance Measure: 80% of all Whitireia programmes contain a Treaty of Waitangi component

This objective was achieved. A Treaty of Waitangi component is built into around 81% of teaching programmes offered at Whitireia campuses.

OBJECTIVE 19

PERFORMANCE

Whitireia staff are supported to become knowledgeable about the Treaty of Waitangi

Performance Measure: 80% of all staff participate in at least one professional development activity per year on the Treaty of Waitangi

This objective was achieved. Eighty-eight percent (88%) of staff participated in at least one professional development activity on the Treaty of Waitangi in 2006.

OBJECTIVE 20

PERFORMANCE

Decisions from Whitireia reflect the partnership implicit in the Treaty of Waitangi

Performance Measure: The Directorate, Council, Academic Board and Academic Standards Committee include at least one member of Treaty partners

This objective was achieved. Tangata Whenua were represented on all major decision-making committees as follows:

Council	4	members
Directorate	1	member
Academic Board	3	members
Academic Standards Committee	1	member

Note: In the above objectives, data is based on recorded student enrolments in courses leading to recognised qualifications. Ethnicity data will be based on students' identification of their ethnicities on their enrolment forms.

PERFORMANCE MEASURES DEFINITIONS

Performance measures that the Council considers will enable the preparation of a Statement of Service Performance for the purposes of Section 41.2 (e) of the Public Finance Act are listed below.

Students enrolled expressed as EFTS for the Polytechnic.

Completion Rate

$$\text{Completion rate \%} = \frac{\text{number of students who complete course}}{\text{number of students who enrolled in that course}} \times 100$$

Success Rate

$$\text{Success rate \%} = \frac{\text{number of students who meet course requirements}}{\text{number of students who enrolled in that course}} \times 100$$

("Success" is as defined in the programme approved by the Academic Board and as indicated in information provided for students.)

Student Satisfaction Rating

$$\text{Satisfaction rating \%} = \frac{\text{number of responses of satisfactory or better}}{\text{total number of responses}} \times 100$$

Time lines measure percentage of programmes completed by dates specified to students in pre-programme information.

Location - Programmes will run at Porirua (P), Kapiti (K), Wellington (W), Auckland (A), Mohuia Crescent (M), Prosser Street (P), Tonga (T), Online (O) and Offsite (S).

Quantity Measures are EFTS Target as indicated for the Polytechnic.

Quality Measures are completion rates, success rates and student satisfaction rates.

STATEMENT OF ACCOUNTING POLICIES

for the year ended 31 December 2006

The Reporting Entity

Whitireia Community Polytechnic was established as a tertiary education provider under the Education Act 1989.

The group consists of Whitireia Community Polytechnic and Whitireia Foundation.

The Whitireia Foundation was established to disperse monies for charitable purposes including general education purposes and particularly activities of Whitireia Community Polytechnic for the betterment of it, its students, staff and the community it serves and is included in the group as Whitireia Foundation is regarded as a controlled entity.

These financial statements have been prepared in accordance with the Crown Entities Act 2004 and Section 203 of the Education Act 1989, which includes the requirement to comply with generally accepted accounting practice.

Measurement Base

The financial statements have been prepared on a historical cost basis, modified by the revaluation of certain Property, Plant and Equipment.

Accounting Policies

The following accounting policies that materially affect the measurement of results and financial position have been applied:

Basis of Consolidation

The consolidated financial statements include Whitireia Community Polytechnic and Whitireia Foundation. The consolidated financial statements have been prepared by aggregating like items of assets, liabilities, revenues, expenses and cash flows on a line-by-line basis. All significant inter-entity transactions are eliminated on consolidation.

Budget Figures

The budget figures are those approved by the Council at the beginning of the financial year.

The budget figures have been prepared in accordance with generally accepted accounting practice and are consistent with the accounting policies adopted by the Council for the preparation of the financial statements.

Revenues

Government grants are recognised as income on a course percentage of completion basis.

Donations to Whitireia Community Polytechnic are recognised as income when the donation or asset is received, recorded at fair value.

Accounts Receivable

Accounts Receivable is stated at the estimated realisable value after providing for doubtful and uncollectable debts.

Investments

Investments are stated at the lower of cost or net realisable value.

Any decreases in value are recognised in the Statement of Financial Performance.

Inventories

Inventories available for resale are valued at the lower of cost (determined on a first-in first-out basis) and net realisable value. This valuation includes allowances for slow moving and obsolete inventories. All consumables are charged direct to expenditure.

Employee Entitlements

Provision is made in respect of Whitireia Community Polytechnic's liability for annual leave, tutorial discretionary leave, long service leave and retirement leave. Wages and salaries, annual leave and other entitlements that are expected to be settled within 12 months of reporting date are measured at nominal values on an entitlement basis at current rate of pay.

Entitlements that are payable beyond 12 months, such as long service leave, have been calculated on an actuarial basis. The calculations are based on:

- likely future entitlements accruing to staff, based on years of service, years to entitlement, the likelihood that staff will reach the point of entitlement and contractual entitlements information, and
- the present value of the estimated future cash flows. A discount rate of 7.5%, and an inflation factor of 3% were used. The discount rate is based on the weighted average of Government interest rates for stock with terms to maturity similar to those of the relevant liabilities. The inflation factor is based on the expected long-term increase in remuneration for employees.

Property, Plant and Equipment

Land and Buildings are recorded at a fair value. The valuation was carried out by Adrian J Brady FNZIV, FNZPI, MBA of Telfer Young (Wellington) Ltd in December 2004. In accordance with FRS3 depreciated replacement cost has been used to value those buildings for which a fair value cannot be determined using market based evidence but market based evidence has been used to determine the value of the Mohuia Crescent property.

Whitireia Community Polytechnic has adopted a three year revaluation cycle in accordance with FRS 3.

Crown owned Land and Buildings that Whitireia Community Polytechnic has a right to occupy are included as part of Whitireia Community Polytechnic's Property, Plant and Equipment. Although legal title has not been transferred, Whitireia Community Polytechnic has assumed all the normal risks and rewards of ownership.

Teaching Equipment, Library Collections and other Property, Plant and Equipment are recorded at original cost less depreciation.

Depreciation is provided on a straight line basis on all Property, Plant and Equipment other than land, Art Works and Landscaping at rates which will write off the cost (or valuation) of the assets to their estimated residual values over their useful life. The useful lives and associated depreciation rates of major classes of assets have been estimated as follows:

Asset Category	Life	Rate
Land	N/A	N/A
Buildings	30 and 50 years	3.3% and 2%
Building Services	20 years	5%
Building Fitout	10 years	10%
Plant and Machinery	10 years	10%
Furniture and Fittings	10 years	10%
Motor Vehicles	5 years	20%
Computer Equipment	4 years	25%
Communications	5 years	20%
Office Equipment	10 years	10%
Teaching Equipment	5 years	20%
Library Collections	8 years	12½%
Minor Equipment	8 years	12½%
Roads	50 years	2%
Leasehold Improvements	3 years	33.30%
Signs	4 years	25%

Course Development Costs

Course Development costs are expensed in the year the liability is incurred.

Goods and Services Tax (GST)

The Financial Statements are prepared on a GST exclusive basis, with the exception of Accounts Receivable and Accounts Payable, which are stated GST inclusive. When GST is not recoverable as input tax then it is recognised as part of the related asset or expense.

Income Tax

Tertiary institutions are exempt from the payment of income tax as they are treated by IRD as charitable organisations. Accordingly, no provision for income tax has been made.

Leases

Operating Leases

Leases where the lessor effectively retains substantially all the risks and benefits of ownership of the leased items are classified as operating leases. Payments under these leases are charged as expenses in the periods in which they are incurred.

Statement of Cash Flows

Cash means cash balances on hand, held in bank accounts, demand deposits and other highly liquid investments in which Whitireia Community Polytechnic invests as part of its day-to-day cash management.

Operating activities include cash received from all income sources of the group and record the cash payments made for the supply of goods and services. Agency transactions are recognised as receipts and payments in the Statement of Cash Flows given that they flow through Whitireia Community Polytechnic's main bank account.

Investing activities are those activities relating to the acquisition and disposal of non-current assets.

Financing activities comprise activities that change the equity and debt capital structure of Whitireia Community Polytechnic.

Financial Instruments

Whitireia Community Polytechnic is party to financial instruments as part of its normal operations. These financial instruments include bank accounts, investments, debtors, creditors and loans. All financial instruments are recognised in the Statement of Financial Position and all revenues and expenses in relation to financial instruments are recognised in the Statement of Financial Performance.

All financial instruments are shown at their fair value.

Changes in Accounting Policy

There have been no changes from the accounting policies adopted in the last audited financial statements. All policies have been applied on a basis consistent with the previous period.

Impact of adopting the New Zealand Equivalents to the International Financial Reporting Standards (NZ IFRS) from 2007.

The Polytechnic has carried out a careful planning process in preparation for the transition to IFRS in 2007. An assessment of the key differences in accounting policies was made and opening balances based on IFRS calculated as at 1 January 2006.

Changes in accounting policies which may impact on the financial statements of the Polytechnic in 2007 are:

(1) Investment Properties: Under current accounting policy, movements in fair values of properties are taken to the asset revaluation reserve. However, movements in the values of properties classified as investment properties under IFRS must be taken to the income statement.

(2) Employee Entitlements: Under current accounting policies, no provision is made for future sick leave. Under NZ IFRS, sick leave is required to be recognised as a liability.

These changes are not expected to have a material effect on the financial results of the Polytechnic in 2007.

STATEMENT OF FINANCIAL PERFORMANCE

for the year ended 31 December 2006

	Note	Parent			Consolidated	
		Actual	Budget	Actual	Actual	Actual
		2006	2006	2005	2006	2005
		\$	\$	\$	\$	\$
Government Grants	1	19,817,402	19,859,660	20,425,698	19,817,402	20,425,698
Student Tuition Fees		7,168,298	8,064,375	6,584,394	7,168,298	6,584,394
Other Fees and Charges	2	11,956,116	11,991,440	13,186,798	11,956,116	13,186,798
Interest Income		812,757	464,392	745,120	836,123	765,010
Polyshop		383,704	300,270	326,992	383,704	326,992
Sundry Income	3	2,178,280	2,132,205	713,754	2,192,980	785,810
Total Operating Revenue		42,316,557	42,812,342	41,982,756	42,354,623	42,074,702
Cost of Services		43,609,623	43,347,664	41,268,746	43,649,402	41,297,256
Polyshop		292,425	236,907	309,948	292,425	309,948
Total Cost of Operations		43,902,048	43,584,571	41,578,694	43,941,827	41,607,204
Net Surplus/Deficit for the Period	4	-1,585,491	-772,229	404,062	-1,587,204	467,498

Net Deficit is -3.7% Operating Revenue

The accompanying accounting policies and notes form an integral part of these financial statements.

STATEMENT OF MOVEMENTS IN EQUITY

as at 31 December 2006

	Parent			Consolidated	
	Actual	Budget	Actual	Actual	Actual
	2006	2006	2005	2006	2005
	\$	\$	\$	\$	\$
Net Surplus/Deficit for the period	-1,585,491	-772,229	404,062	-1,587,204	467,498
Revaluation Adjustment to Property, Plant and Equipment	-382,776	-383,057	-692,470	-382,776	-692,470
Total Recognised Revenues and Expenses for the Period	-1,968,267	-1,155,286	-288,408	-1,969,980	-224,972
Public Equity as at 1 January	47,616,545	47,616,545	47,904,953	47,851,667	48,076,639
Public Equity as at 31 December 2006	45,648,278	46,461,259	47,616,545	45,881,687	47,851,667

The accompanying accounting policies and notes form an integral part of these financial statements.

STATEMENT OF FINANCIAL POSITION

as at 31 December 2006

	Note	Parent			Consolidated	
		Actual 2006	Budget 2006	Actual 2005	Actual 2006	Actual 2005
		\$	\$	\$	\$	\$
Public Equity						
General Equity	5	37,284,016	38,097,278	38,869,507	37,517,425	39,104,629
Asset Revaluation Reserve	6	8,364,262	8,363,981	8,747,038	8,364,262	8,747,038
Total Public Equity		45,648,278	46,461,259	47,616,545	45,881,687	47,851,667
Current Assets						
Cash and Bank		505,851	156,516	717,115	505,866	751,823
Accounts Receivable	7	527,048	1,025,000	1,267,064	528,157	1,273,239
Prepayments		358,168	125,000	600,386	358,168	600,386
Short Term Investments	8	7,500,000	5,850,000	5,000,000	7,857,146	5,319,000
Inventories	9	73,691	80,000	69,585	73,691	69,585
Total Current Assets		8,964,758	7,236,516	7,654,150	9,323,028	8,014,033
Less Current Liabilities						
Fees in Advance		2,871,370	850,000	2,193,164	2,871,370	2,193,164
Accounts Payable	10	2,757,099	2,005,000	2,268,584	2,759,263	2,270,648
Provision for Employee Entitlements	11	1,265,449	1,250,000	1,224,282	1,265,449	1,224,282
Special Accounts	12	85,242	90,000	86,355	207,939	209,052
Total Current Liabilities		6,979,160	4,195,000	5,772,385	7,104,021	5,897,146
Working Capital		1,985,598	3,041,516	1,881,765	2,219,007	2,116,887
Non-Current Assets						
Property, Plant and Equipment	13	43,782,324	43,444,741	45,761,137	43,782,324	45,761,137
Shares		10,002	10,002	10,002	10,002	10,002
Total Non-Current Assets		43,792,326	43,454,743	45,771,139	43,792,326	45,771,139
Non-Current Liabilities						
Provision for Employee Entitlements	11	129,646	35,000	36,359	129,646	36,359
Total Non-Current Liabilities		129,646	35,000	36,359	129,646	36,359
Net Assets		45,648,278	46,461,259	47,616,545	45,881,687	47,851,667

The accompanying accounting policies and notes form an integral part of these financial statements.

STATEMENT OF CASH FLOWS

for the year ended 31 December 2006

	Parent			Consolidated	
	Actual	Budget	Actual	Actual	Actual
	2006	2006	2005	2006	2005
	\$	\$	\$	\$	\$
Cash Flows from Operating Activities					
Cash was provided from:					
Government Grants	20,988,933	19,666,942	19,270,559	20,988,933	19,270,559
Tuition Fees	15,735,817	14,755,697	17,630,342	15,735,817	17,630,342
Revenues from Services Provided	5,267,139	6,096,325	3,632,825	5,284,839	3,701,826
Interest Received	836,626	477,278	819,759	862,058	837,340
GST	45,825	171,766	259,485	45,825	259,485
	42,874,340	41,168,008	41,612,970	42,917,472	41,699,552
Cash was applied to:					
Payments to Employees	22,027,016	20,816,040	20,282,648	22,027,016	20,282,648
Payments to Suppliers	17,716,500	19,082,567	18,806,888	17,756,179	18,835,303
	39,743,516	39,898,607	39,089,536	39,783,195	39,117,951
Net Cash Flows from Operating Activities	3,130,824	1,269,401	2,523,434	3,134,277	2,581,601
Cash Flows from Investing Activities					
Cash was provided from:					
Proceeds from sales of assets	1,540,566	1,520,000	0	1,540,566	0
	1,540,566	1,520,000	0	1,540,566	0
Cash was applied to:					
Purchase of Property, Plant and Equipment	2,382,654	2,500,000	7,501,099	2,382,654	7,501,099
	2,382,654	2,500,000	7,501,099	2,382,654	7,501,099
Net Cash Flows from Investing Activities	-842,088	-980,000	-7,501,099	-842,088	-7,501,099
Net increase (decrease) in cash held	2,288,736	289,401	-4,977,665	2,292,189	-4,919,498
Plus Opening Cash	5,717,115	5,717,115	10,694,780	6,070,823	10,990,321
Closing Cash Balance	8,005,851	6,006,516	5,717,115	8,363,012	6,070,823
Cash and Bank	505,851	6,500	717,115	505,866	751,823
Short Term Investments	7,500,000	6,000,016	5,000,000	7,857,146	5,319,000
Closing Cash Balance	8,005,851	6,006,516	5,717,115	8,363,012	6,070,823

The accompanying accounting policies and notes form an integral part of these financial statements.

RECONCILIATION OF THE NET SURPLUS/DEFICIT ON OPERATIONS WITH THE NET CASH FLOWS FROM OPERATING ACTIVITIES

	Parent		Consolidated	
	2006	2005	2006	2005
	\$	\$	\$	\$
Net Surplus/Deficit for the period	-1,585,491	404,062	-1,587,204	467,498
Add (Less) Non Cash Items:				
Depreciation	3,755,072	3,669,302	3,755,072	3,669,302
Loss (Gain) on Sale of Property, Plant and Equipment	-810,172	30,131	-810,172	30,131
Add (Less) Movements in Working Capital Items:				
(Increase) Decrease in Receivables	740,016	-281,876	745,082	-287,184
(Increase) Decrease in Prepayments	242,218	-170,406	242,218	-170,406
(Increase) Decrease in Inventory	-4,106	12,060	-4,106	12,060
(Decrease) Increase in Payables	15,518	-1,885,363	15,619	-1,885,324
(Decrease) Increase in Employee Entitlements	134,453	315,370	134,453	315,370
(Decrease) Increase in Fees in Advance	678,205	67,099	678,205	67,099
(Decrease) Increase in GST	-33,776	358,865	-33,776	358,865
(Decrease) Increase in Special Accounts	-1,113	4,190	-1,113	4,190
Net Cash Flow from Operating Activities	3,130,824	2,523,434	3,134,277	2,581,601

The accompanying accounting policies and notes form an integral part of these financial statements.

STATEMENT OF COMMITMENTS

as at 31 December 2006

	Parent		Consolidated	
	2006	2005	2006	2005
	\$	\$	\$	\$
Capital Commitments Approved and Contracted				
Not later than one year	145,373	151,068	145,373	151,068
Other Non-Cancellable Operating Leases				
Not later than one year	1,116,441	1,263,365	1,116,441	1,263,365
1 to 2 years	888,481	1,119,671	888,481	1,119,671
2 to 5 years	1,591,461	36,424	1,591,461	36,424
Other Non-Cancellable Contracts				
Not later than one year	149,239	149,439	149,239	149,439
1 to 2 years	694	65,772	694	65,772
Total Commitments	3,891,689	2,785,739	3,891,689	2,785,739

The accompanying accounting policies and notes form an integral part of these financial statements.

STATEMENT OF CONTINGENT LIABILITIES

as at 31 December 2006

There are no known contingent liabilities at this date. (2005: Nil)

The accompanying accounting policies and notes form an integral part of these financial statements.

NOTES TO AND FORMING PART OF THE FINANCIAL STATEMENTS

as at 31 December 2006

1 Government Grants

This includes monies received from Government by way of an Operational Bulk Grant, which is based on equivalent full-time student (EFTS) levels and the funding category levels of these EFTS, and specific purpose related grants.

2 Other Fees and Charges

	Parent		Consolidated	
	2006	2005	2006	2005
	\$	\$	\$	\$
International Students	7,832,404	10,361,962	7,832,404	10,361,962
Education Service Contracts	3,442,945	2,350,486	3,442,945	2,350,486
The Learning Shop	324,194	143,331	324,194	143,331
Special Fees	0	14,334	0	14,334
Child Care	290,419	269,503	290,419	269,503
Secondary Tertiary Alignment of Resources	66,154	47,182	66,154	47,182
Total Other Fees and Charges	11,956,116	13,186,798	11,956,116	13,186,798

3 Sundry Income

The significant items within this revenue item are:

	Parent		Consolidated	
	2006	2005	2006	2005
	\$	\$	\$	\$
Rent	89,811	75,532	89,811	75,532
Student Health Service	53,558	47,970	53,558	47,970
Administration Fees	25,619	25,630	25,619	25,630
Homestay Admin Fees	169,631	134,538	169,631	134,538
Gain on Sale of Fixed Assets	1,000,096	0	1,000,096	0
Grant for Property	265,000	0	265,000	0

4 Statement of Financial Performance

The net surplus/deficit is after providing for:

	Parent		Consolidated	
	2006	2005	2006	2005
	\$	\$	\$	\$
Fees Paid to External Auditors	61,625	53,000	63,790	55,064
Councillors Fees	45,850	45,050	45,850	45,050
Bad Debts Written Off	27,038	23,502	27,038	23,502
Change in Provision for Doubtful Debts	-14,636	-30,129	-14,636	-30,129
Loss on Disposal and Write Down of Assets	454,923	30,131	454,923	30,131
Depreciation:				
- Buildings	393,211	331,480	393,211	331,480
- Building Services	289,779	272,685	289,779	272,685
- Building Fitout	851,532	805,697	851,532	805,697
- Teaching Equipment	230,372	198,602	230,372	198,602
- Computers	1,250,222	1,335,570	1,250,222	1,335,570
- Furniture & Fittings	119,358	115,249	119,358	115,249
- Office Equipment	35,905	28,986	35,905	28,986
- Library	162,984	161,187	162,984	161,187
- Motor Vehicles	54,379	43,417	54,379	43,417
- Plant & Machinery	39,831	36,205	39,831	36,205
- Roads	13,759	13,460	13,759	13,460
- Leasehold Improvements	238,855	243,425	238,855	243,425
- Minor Equipment	29,242	58,552	29,242	58,552
- Communications	26,087	11,508	26,087	11,508
- Signs	19,556	13,279	19,556	13,279
Total Depreciation	3,755,072	3,669,302	3,755,072	3,669,302

5 General Equity

	Parent		Consolidated	
	2006	2005	2006	2005
	\$	\$	\$	\$
Balance 1 January	38,869,507	38,465,445	39,104,629	38,637,131
Deficit Transferred	-1,585,491	404,062	-1,587,204	467,498
Balance 31 December	37,284,016	38,869,507	37,517,425	39,104,629
Balance of General Equity 31 December	37,284,016	38,869,507	37,517,425	39,104,629

6 Asset Revaluation Reserve

	Parent		Consolidated	
	2006	2005	2006	2005
	\$	\$	\$	\$
Balance 1 January	8,747,038	9,439,508	8,747,038	9,439,508
Net Revaluation of Assets	-382,776	-692,470	-382,776	-692,470
Balance 31 December	8,364,262	8,747,038	8,364,262	8,747,038

An adjustment was made to the valuations of two properties in 2005 to reflect market based valuations. The reduction in 2006 results from the disposal of 10-14 Manchester Street.

The reserve comprises revaluations in the following classes of assets:

	Parent		Consolidated	
	2006	2005	2006	2005
	\$	\$	\$	\$
Land	4,299,882	4,424,251	4,299,882	4,424,251
Improvements	4,064,380	4,322,787	4,064,380	4,322,787
Balance 31 December	8,364,262	8,747,038	8,364,262	8,747,038

7 Accounts Receivable

	Parent		Consolidated	
	2006	2005	2006	2005
	\$	\$	\$	\$
Trade Debtors	315,628	883,863	316,737	890,038
Less Provision for Doubtful Debts	-13,335	-27,971	-13,335	-27,971
	302,293	855,892	303,402	862,067
Other Amounts Receivable	224,755	411,172	224,755	411,172
Total	527,048	1,267,064	528,157	1,273,239

8 Investments

	Parent		Consolidated	
	2006	2005	2006	2005
	\$	\$	\$	\$
Short Term	7,500,000	5,000,000	7,857,146	5,319,000
Total	7,500,000	5,000,000	7,857,146	5,319,000

a Current Portion

	Parent		Consolidated	
	2006	2005	2006	2005
	\$	\$	\$	\$
ANZ Bank	2,500,000	2,000,000	2,500,000	2,000,000
ASB Bank	2,500,000	2,000,000	2,566,361	2,000,000
KiwiBank	2,500,000	1,000,000	2,500,000	1,000,000
National Bank of New Zealand	0	0	290,785	319,000
Total	7,500,000	5,000,000	7,857,146	5,319,000

b Interest Rates

The weighted average effective interest rates on current investments were:

	Parent		Consolidated	
	2006	2005	2006	2005
	\$	\$	\$	\$
Weighted Average Effective Interest Rate				
Short Term Deposits	7.53%	7.42%	7.51%	7.41%

c Repricing Maturities

	Less Than 6 Months	Less Than 6 Months
Short Term Deposits	7,500,000	7,857,147

9 Inventories

	Parent		Consolidated	
	2006	2005	2006	2005
	\$	\$	\$	\$
Materials and Stores	8,434	8,024	8,434	8,024
Goods for Resale	65,257	61,561	65,257	61,561
Total	73,691	69,585	73,691	69,585

10 Accounts Payable

	Parent		Consolidated	
	2006	2005	2006	2005
	\$	\$	\$	\$
Trade Creditors	2,197,126	2,023,255	2,199,290	2,025,319
Other Accounts Payable	559,973	245,329	559,973	245,329
Total	2,757,099	2,268,584	2,759,263	2,270,648

11 Employee Entitlements

	Parent		Consolidated	
	2006	2005	2006	2005
	\$	\$	\$	\$
Annual Leave	1,265,449	1,224,282	1,265,449	1,224,282
Long Service Leave	51,738	36,359	51,738	36,359
Retirement Leave	77,908	0	77,908	0
	1,395,095	1,260,641	1,395,095	1,260,641
Current	1,265,449	1,224,282	1,265,449	1,224,282

Retirement Leave was calculated on an actuarial basis for the first time in 2006

12 Special Accounts

Special Accounts represents funds held by Whitireia Community Polytechnic on behalf of others and funds provided to Whitireia Community Polytechnic by various organisations for specific projects.

	Parent			Consolidated		
	2006 Receipts	2006 Payments	2006 Balance	2005 Balance	2006 Balance	2005 Balance
	\$	\$	\$	\$	\$	\$
Homestay Trust	88,696	87,976	720	0	720	0
Whitireia International Homestay Trust	166,700	157,857	37,774	28,931	37,774	28,931
Student Insurance	108,979	121,530	7,548	20,099	7,548	20,099
Study Skills Booklet	0	40	21,478	21,518	21,478	21,518
Activities Account	9,353	9,659	5,913	6,219	5,913	6,219
Whitireia Foundation	0	0	0	0	122,697	122,697
Other Accounts	9,088	6,867	11,809	9,588	11,809	9,588
	382,816	383,929	85,242	86,355	207,939	209,052

13 Property, Plant and Equipment

	Parent and Consolidated					
	2006			2005		
	Cost / Valuation	Accumulated Depreciation	Net Book Value	Cost / Valuation	Accumulated Depreciation	Net Book Value
\$	\$	\$	\$	\$	\$	
Land:						
Crown	5,992,215	0	5,992,215	5,992,215	0	5,992,215
Polytechnic	2,193,107	0	2,193,107	2,436,133	0	2,436,133
Buildings:						
Crown	1,857,315	112,089	1,745,226	1,857,315	56,045	1,801,270
Polytechnic	14,969,073	606,905	14,362,168	14,921,259	276,177	14,645,082
Building Services:						
Crown	523,843	49,990	473,853	523,843	24,995	498,848
Polytechnic	5,602,392	504,774	5,097,618	5,191,148	247,690	4,943,458
Building Fitout	8,671,896	1,634,401	7,037,495	8,670,130	805,697	7,864,433
Artwork	28,226	0	28,226	28,226	0	28,226
Computers	8,996,141	6,544,782	2,451,359	7,998,181	5,532,872	2,465,309
Furniture & Fittings	1,284,468	666,140	618,328	1,249,203	548,848	700,355
Library Collection	2,026,044	1,340,323	685,721	1,758,845	1,177,339	581,506
Minor Equipment	553,631	505,971	47,660	545,273	476,729	68,544
Motor Vehicles	411,680	258,239	153,441	351,853	203,859	147,994
Office Equipment	268,167	178,111	90,056	278,502	173,568	104,934
Teaching Equipment	1,886,786	1,245,172	641,614	1,974,576	1,292,569	682,007
Leasehold Improvements	724,414	461,870	262,544	724,414	224,674	499,740
Communications System	592,265	500,327	91,938	581,571	474,240	107,331
Plant & Machinery	571,587	254,418	317,169	505,932	215,525	290,407
Roads	717,564	26,943	690,621	693,273	13,460	679,813
Landscaping	674,706	0	674,706	631,028	0	631,028
Signs	108,143	33,280	74,863	104,260	33,926	70,334
Work in Progress - Buildings	52,396	0	52,396	522,170	0	522,170
Total	58,706,059	14,923,735	43,782,324	57,539,351	11,778,213	45,761,137

14 Related Party Information

Crown/Government

Whitireia Community Polytechnic is a wholly owned entity of the Crown. The Government influences the roles of Whitireia Community Polytechnic as well as being a significant source of revenue.

Whitireia Community Polytechnic enters into transactions with Government Departments and Crown agencies on an arm's length basis and where those parties are only acting in the course of their normal dealings with the institution. These transactions are not separately disclosed because of the volume of the transactions and because the transactions are conducted on an arm's length basis in the normal course of business.

Inter-Group

All members of the group are considered to be related parties of Whitireia Community Polytechnic. This includes Whitireia Foundation.

Members of Council

Kapiti's Beach FM, of which Mr R Wilkinson is a shareholder, supplied services on normal commercial terms at a cost of \$382.

There are no other related party transactions.

15 Financial Instruments

Whitireia Community Polytechnic is party to financial instrument arrangements as part of its every day operations. These financial instruments include Bank Accounts, Bank Deposits, Accounts Receivable, Accounts Payable and Term Borrowings, and are recognised in the Statement of Financial Position.

Credit Risk

Whitireia Community Polytechnic has a minimal credit risk in its holdings of various financial instruments. These instruments include cash, bank deposits and accounts receivable.

The institution places its investments with institutions that have a high credit rating. It also reduces its exposure to risk by limiting the amount that can be invested in any one institution. Whitireia Community Polytechnic believes that these policies reduce the risk of any loss that would arise from its investment activities.

Accounts receivable are stated at the estimated realisable value after providing for amounts not considered recoverable. There is no significant concentration of credit risk for accounts receivable.

Currency Risk and Interest Rate Risk

The interest rate on a bank overdraft is 21.75% per annum (2005: 27.45%). This is a floating rate set by the bank. Apart from this Whitireia Community Polytechnic has no significant exposure to currency risk and interest rate risk on its remaining financial assets and liabilities.

16 Segmental Information

Whitireia Community Polytechnic operates predominantly in one industry (tertiary education) and in four geographical areas with a campus in Porirua City, Kapiti Campus at Paraparaumu, Wellington City Campus in Wellington and Whitireia International in Auckland.

17 Councillors' Fees and Benefits

	2006	2005
	\$	\$
Arthur T	1,800	1,800
Bradley H L	2,200	2,200
Moses C A	1,400	0
Fortuin G	2,200	400
Haggerty C E	1,600	600
Henderson G J	600	2,400
Marshall B M	800	0
Manderson M A	0	1,200
Mareko C	800	1,600
Nichols A D	1,600	1,600
Rangi C J	1,600	1,800
Sharman D R	19,500	19,500
Snively S	9,750	9,750
Wilkinson R K	2,000	2,200

MANAGEMENT STATEMENT

In terms of the Crown Entities Act 2004, we hereby certify that:


- 1 We have been responsible for the preparation of these financial statements and the judgements used therein: and
- 2 We have been responsible for establishing and maintaining a system of internal control designed to provide reasonable assurance as to the integrity and reliability of financial reporting, and
- 3 We are of the opinion that these financial statements fairly reflect the financial position and operations of this Polytechnic for the year ended 31 December 2006.



Chairperson of Council
30 April 2007



Chief Executive
30 April 2007



Director, Business and Corporate Services
30 April 2007

AUDIT REPORT
TO THE READERS OF
THE WHITIREIA COMMUNITY POLYTECHNIC AND GROUP'S
FINANCIAL STATEMENTS AND PERFORMANCE INFORMATION
FOR THE YEAR ENDED 31 DECEMBER 2006

The Auditor-General is the auditor of the Whitireia Community Polytechnic (the Polytechnic) and group. The Auditor-General has appointed me, Stephen Lucy, using the staff and resources of Audit New Zealand to carry out the audit of the financial statements and statement of service performance of the Polytechnic and group, on his behalf, for the year ended 31 December 2006.

Unqualified opinion

In our opinion:

- the financial statements of the Polytechnic and group on pages 25 to 43:
 - comply with generally accepted accounting practice in New Zealand; and
 - fairly reflect:
 - the Polytechnic and group's financial position as at 31 December 2006;
 - the results of operations and cash flows for the year ended on that date; and
- the performance information of the Polytechnic and group on pages 14 to 24 fairly reflects its service performance achievements measured against the performance targets adopted for the year ended on that date.

The audit was completed on 30 April 2007, and is the date at which our opinion is expressed.

The basis of our opinion is explained below. In addition, we outline the responsibilities of the Council and the Auditor, and explain our independence.

Basis of opinion

We carried out the audit in accordance with the Auditor-General's Auditing Standards, which incorporate the New Zealand Auditing Standards.

We planned and performed the audit to obtain all the information and explanations we considered necessary in order to obtain reasonable assurance that the financial statements and statement of service performance did not have material misstatements whether caused by fraud or error.

Material misstatements are differences or omissions of amounts and disclosures that would affect a reader's overall understanding of the financial statements and statement of service performance. If we had found material misstatements that were not corrected, we would have referred to them in our opinion.

The audit involved performing procedures to test the information presented in the financial statements and statement of service performance. We assessed the results of those procedures in forming our opinion.

Audit procedures generally include:

- determining whether significant financial and management controls are working and can be relied on to produce complete and accurate data;
- verifying samples of transactions and account balances;
- performing analyses to identify anomalies in the reported data;
- reviewing significant estimates and judgements made by the Council;
- confirming year-end balances;
- determining whether accounting policies are appropriate and consistently applied; and
- determining whether all financial statement disclosures are adequate.

We did not examine every transaction, nor do we guarantee complete accuracy of the financial statements and statement of service performance.

We evaluated the overall adequacy of the presentation of information in the financial statements and statement of service performance. We obtained all the information and explanations we required to support our opinion above.

Responsibilities of the Council and the Auditor

The Council is responsible for preparing financial statements in accordance with generally accepted accounting practice in New Zealand. Those financial statements must fairly reflect the financial position of the Polytechnic and group as at 31 December 2006. They must also fairly reflect the results of its operations and cash flows for the year ended on that date. The Council is also responsible for preparing performance information that fairly reflects the service performance achievements for the year ended 31 December 2006. The Council's responsibilities arise from the Education Act 1989 and the Crown Entities Act 2004.

We are responsible for expressing an independent opinion on the financial statements and statement of service performance and reporting that opinion to you. This responsibility arises from section 15 of the Public Audit Act 2001 and the Crown Entities Act 2004.

Independence

When carrying out the audit we followed the independence requirements of the Auditor-General, which incorporate the independence requirements of the Institute of Chartered Accountants of New Zealand.

Other than the audit, we have no relationship with or interests in the Polytechnic or its subsidiary.



S B Lucy
Audit New Zealand
On behalf of the Auditor-General
Wellington, New Zealand

Matters relating to the electronic presentation of the audited financial statements

This audit report relates to the financial statements of Whitireia Community Polytechnic and Group for the year ended 31 December 2006 included on the Whitireia Community Polytechnic's web-site. The Whitireia Community Polytechnic's Council is responsible for the maintenance and integrity of Whitireia Community Polytechnic's web site. We have not been engaged to report on the integrity of the Whitireia Community Polytechnic's web site. We accept no responsibility for any changes that may have occurred to the financial statements since they were initially presented on the web site.

The audit report refers only to the financial statements named above. It does not provide an opinion on any other information which may have been hyperlinked to/ from these financial statements. If readers of this report are concerned with the inherent risks arising from electronic data communication they should refer to the published hard copy of the audited financial statements and related audit report dated 30 April 2007 to confirm the information included in the audited financial statements presented on this web site.

Legislation in New Zealand governing the preparation and dissemination of financial statements may differ from legislation in other jurisdictions.

SPECIAL SUPPLEMENTARY GRANTS

Statement of Revenue and Expenditure for the period 1 January to 31 December 2006

MĀORI LEARNERS	2006		2005	
	Revenue	Expenditure	Revenue	Expenditure
	\$	\$	\$	\$
	48,750	76,601	78,018	116,288

PACIFIC LEARNERS	2006		2005	
	Revenue	Expenditure	Revenue	Expenditure
	\$	\$	\$	\$
	88,930	94,225	64,637	100,573

SPECIAL EDUCATION (TAUTOKO EDUCATION CENTRE)	2006		2005	
	Revenue	Expenditure	Revenue	Expenditure
	\$	\$	\$	\$
	60,500	70,980	53,778	69,425

SPECIAL EDUCATION (NEW DIRECTIONS & WORK SKILLS)	2006		2005	
	Revenue	Expenditure	Revenue	Expenditure
	\$	\$	\$	\$
	54,652	60,652	48,579	82,941

TERTIARY STUDENTS WITH DISABILITIES	2006		2005	
	Revenue	Expenditure	Revenue	Expenditure
	\$	\$	\$	\$
	90,072	90,072	88,259	122,043

PROGRAMME ADVISORY COMMITTEES

FACULTY OF ARTS & COMMUNICATION

DANCE (PERFORMING ARTS)

Bachelor of Applied Arts (Performing Arts)**Diploma in Performing Arts (Advanced)****Certificate in Māori Pacific Performance**

Bob Cater
Porirua Community Arts Council

Marie Cribb
Naenae College, Lower Hutt

Mark Kairua
Porirua City Council

Caroline Mareko
Ministry of Education, Wellington

Lynne Pringle
DANZ Secondary School Education Officer, Wellington

Dolly Seow-Ganeson
NZ Trade and Enterprise, Wellington

Paora Ropata
Atiawa Toa, Lower Hutt

Deirdre Tarrant
Footnote Dance Company, Wellington

DESIGN AND MULTIMEDIA

Diploma in Digital Design and Multimedia
National Diploma in Design Graphic Strand**National Certificate in Electronic Multimedia (Advanced)**
National Certificate in Electronic Multimedia (Levels 3 and 4)
Certificate in Digital Media
Certificate in Desktop Publishing for Print and the Web

Kenneth Gilliam
Norse Advertising Design, Wellington

Lian Hathaway
Ex-pert, Wellington

Michelle Knight
Spark Talent, Wellington

Dickson Lentell
Wakefields Digital Colour Solutions Ltd, Wellington

Rex McIntosh
Click Suite, Wellington

Lynn Peck
Central Media Ltd, Wellington

Collin Phillips
Base Two Ltd, Wellington

Jack Yan
Jack Yan & Associates, Wellington

DRAMA (STAGE AND SCREEN)

Diploma in Applied Stage and Screen Arts (Advanced)**Diploma in Stage and Screen Arts**

Pip Byrne
Tutor/Writer, Wellington

Richard Finn
New Zealand College of Performing Arts, Porirua

Ruth Franks
Avalon Film and Television School, Lower Hutt

Amanda Hereaka
Taku Rua, Wellington

Colin Holloway
Former Student, Kapiti

Libby Justice
Wellington Actors Agency

Mark Kairua
Porirua City Council

Robyn Payne
Theatre Professional, Wellington

Keryn Stone,
New Zealand College of Performing Arts, Porirua

Susan Wilson
Circa Theatre, Wellington

MUSIC

Bachelor of Applied Arts (Music)
National Diploma in Music (Level 7)
Diploma in Rock, Jazz and Commercial Music
Certificate in Rock, Jazz and Commercial Music
Certificate in Foundation Music
Certificate in DJ Music

Paul Baines
Business Consultant, Wellington

Roger Booth
New Zealand Qualifications Authority, Wellington

Paul Dyne
Massey University, Wellington

Neil Maddever
Sound Engineer, Wellington

Ray Mercer
Māori Musician, Wellington

Neil Worboys
Principal, Clyde Quay School, Wellington

Fraser Tahau
Professional Musician, Levin

PHOTOGRAPHY

Certificate in Photography (Advanced)
Certificate in Practical Photography

Chris Coad
Freelance Photographer, Wellington

Stanley Garmonsway
Photographic Retailer, Wellington

Glen Howey
Tutor/Freelance Documentary Photographer, Wellington

Murray Lloyd
Murray Lloyd Photography, Wellington

Trish Pointon
Photographer, Mana

Mel Phillips
Mel Phillips Photography, Raumati

VISUAL ARTS

Bachelor of Applied Arts (Visual Arts)
Diploma in Visual Arts (Advanced)
National Diploma in Visual Arts (Advanced)(Level 7)
Diploma in Visual Arts
National Diploma in Visual Arts (Level 6)
Diploma in Jewellery Design
National Certificate in Visual Arts (Level 4)
Certificate in Visual Arts
Certificate in Mastercraft

Kivani Moriarty
Pātaka, Porirua Museum of Arts & Cultures

Eric Ngan
Te Papa National Museum, Wellington

Gary Shuker
Bishop Viard College, Porirua

Helen Smith
Porirua Community Arts Council

Margaret Tolland
Pātaka, Porirua Museum of Arts & Cultures

COMMUNICATION & MEDIA STUDIES

CREATIVE WRITING

Bachelor of Applied Arts (Creative Writing)
Graduate Diploma in Creative Writing
Diploma in Creative Writing (Advanced)
Diploma in Creative Writing

Chris Else
NZ Society of Authors, Wellington

Catherine Fitzgerald
Blue Skin Films, Wellington

Mandy Hager
Writer, Wellington

John Huria
Huia Publishers, Wellington

Karen Ross
NZ Book Council, Wellington

Graeme Tetley
Writer/Script Consultant, Wellington

ENGLISH LANGUAGE

Certificates in Intensive General English (Beginner, Elementary, Intermediate, Pre-Intermediate, Upper Intermediate, Advanced, Academic)
Certificate in Intensive English for IELTS
Certificate in English for Further Studies

Lynda Eves
New Settlers Services, Porirua

Ariadne Fountain
Porirua Language Project

Ellanor Henry
Wellington Institute of Technology, Lower Hutt

Reverend Perema Leasi
P.I.P.C Church Minister, Porirua

Reverend Setu Masina
Pacific Church Minister, Porirua.

Lorraine Sherlock
Aotea College, Porirua

Bounyang Thiphakone
Local Ethnic Community Advisor, Porirua

JOURNALISM

National Diploma in Journalism
National Certificate in Journalism (Introductory)

Clive Conland
Radio/Broadcasting, Wellington

Bernadette Courtney
The Dominion Post, Wellington

Matt Dallas
Kapi Mana News, Porirua

Geoff Davies
Chartered Accountant Journal, Wellington

Nigel Evans
CWA New Media, Wellington

Diane Joyce
Kapiti Newspapers

Queenie Rikihana-Hyland
Independent Consultant, Otaki

Jim Tucker
NZ Journalists Training Organisation, Wellington

Fa'amatuainu Tino Pereira
Radio/Pacific Journalist

David Venables
Radio New Zealand, Wellington

Rachel Walsh
Capital Community Newspapers, Petone

PUBLISHING

Diploma in Publishing

Fergus Barrowman
Victoria University Press, Wellington

Robbie Burton
Craig Potton Publishing, Nelson

Elizabeth Caffin
Auckland University Press

Linda Henderson
Booksellers NZ, Wellington

Joan Huria
Ahi Text Solutions, Wellington

Ann Mallinson
Mallinson-Rendel Publishers, Wellington

FACULTY OF BUSINESS AND INFORMATION TECHNOLOGY

BUSINESS AND MANAGEMENT

Bachelor of Applied Business Studies
New Zealand Diploma in Business
Diploma in Accounting
Diploma in HR Management
Diploma in Management
Diploma in Marketing
Diploma in Management (Not for Profit sector)
NZIM Certificate in Management
NZIM Small Business Entrepreneurs Certificate
Certificate in Small Business Management
Certificate in Public Sector Knowledge
Legal Executives Certificate

Aaron Ah-Chee
Drake, Wellington

Batch Hales
NZIM, Wellington

Liz Kelly
Kelly Hygiene Ltd, Porirua

Ian McDonald
Change Training, Wellington

David Miller
Vantage Consulting Group, Wellington

COMPUTING & INFORMATION TECHNOLOGY

Bachelor of Information Technology
Diploma in Information and Communications Technology
National Diploma in Computing (Support)(Level 5)
Certificate in Computing
Certificate in Computing (Introductory)

Mark Carroll
Microsoft NZ Ltd, Wellington

Rick Hook
gen-i Ltd, Wellington

Captain Roger MacDonald
NZ Defence Force, Porirua

Cliff Pratt
Datacom, Tawa

Michael Stevens
MS & Associates, Porirua

Dennis Sharman
Sharman Consulting Ltd, Tawa

FACULTY OF HEALTH, EDUCATION AND SOCIAL SCIENCES

FOUNDATION EDUCATION

Certificate in Foundation Education (with strands in Business, Health Science and Social Sciences)

Jasna Antunovich
Multicultural Centre, Wellington

Marie Caldwell
Graduate, Wellington

Kahlm Graham
Graduate, Wellington

Carolyn Harvey
Graduate, Wellington

Adrienne Rogers
Graduate, Wellington

Raylene Tarei
Graduate, Wellington

Certificate in New Directions
Certificate in Work Skills

Garry Braddock
Community Representative, Porirua

Val Bridge
Special Education, Porirua

Bernice McMahon
Special Education, Porirua

Greg Sayer
Capital Support, Porirua

NURSING & HEALTH SCIENCES

MENTAL HEALTH

**Postgraduate Certificate in Forensic
Psychiatric Care**
**Postgraduate Certificate in Psychiatric
Nursing (Mental Health)**
**Graduate Diploma in Psychiatric
Practice**
**National Certificate in Mental Health
(Mental Health Support Work) (Level
4)**

Dr Helen Bichan
Honorary Member, Porirua

Kaye Carncross
*Mental Health Service, Capital & Coast
District Health Board, Wellington*

Lewis Cate
*Mental Health Service, Capital & Coast
District Health Board, Wellington*

Julie Clarke
*Mental Health Service, Wairarapa
District Health Board, Masterton*

Nathan Davis
*Mental Health Services, Nelson
Marlborough District Health Board*

Nigel Fairley
*Forensic Services, Capital & Coast
District Health Board, Porirua*

Kate Farrugia
*Mental Health Services, Mid Central
Health, Palmerston North*

Deirdre Florence
*Forensic Services, Capital & Coast
District Health Board, Porirua*

Debbie Gell
Public Prisons Services, Wellington

Phillip Galley
*Te Puna Waioara, Taranaki District
Health Board, New Plymouth*

Sarah Gordon
Case Consulting, Wellington

Shelley Gunther
*Te Whare Ahuru, Hutt Valley District
Health Board*

Hineora Hakiaka
Mental Health Commission, Wellington

Sarah Hollenback
Te Awhina, Good Health Wanganui

Dennis Klue
*Mental Health Services, Capital &
Coast District Health Board, Porirua*

Aareta Koopu
*Forensic Services, Capital & Coast
District Health Board, Porirua*

Shayola Koperu
*Raumoko, Capital & Coast District
Health Board, Porirua*

Chris McCoard
*Mental Health Services, Good Health
Wanganui*

Beverly Miller
*Forensic Services, Henry Bennett
Centre, Hamilton*

Janine Olasa
Early Intervention Services, Wellington

Reg Orovwuje
*Forensic Services, Capital & Coast
District Health Board, Porirua*

Brian Phillips
*Mental Health Services, Hutt Valley
District Health Board*

Lysette Riley
Eating Disorder Services, Wellington

Dianne Sadler
*Papatuanuku, Capital & Coast District
Health Board, Porirua*

Oketopa Shepherd
*Forensic Health Services, Capital &
Coast District Health Board, Porirua*

Jeff Symonds
*Forensic Services, Health Waikato,
Hamilton*

Eileen Weekly
*Mental Health Services, Capital &
Coast District Health Board, Porirua*

NURSING

Bachelor of Nursing
**Short Course Certificate in Nursing
Registration**
**Short Course Certificate – Introduction
to Clinical Supervision**
**Short Course Certificate in Clinical
Supervision (Advanced)**

Anne Allan-Moetaua
Ministry of Health, Porirua

Irene Calbert
Hutt Valley District Health Board

Dianne Callinicos
Regional Public Health, Lower Hutt

Kaye Carncross
*Capital & Coast District Health Board,
Wellington*

Tony Dal Din
Hutt Valley District Health Board

Jan Duke
Victoria University of Wellington

Margaret Faulkner
Independent Advisor, Porirua

Theresa Fowler
Regional Public Health, Lower Hutt

Alison Jamieson
Royal NZ Plunket Society, Wellington

Cheryle Moss
Victoria University of Wellington

Suzanne Rolls
NZ Nursing Organisation, Wellington

Rachel Searle
*Capital & Coast District Health Board,
Wellington*

Anne Stafford
Graduate, Porirua

Fred Tipa
*Graduate/Kawawhakaruru
Representative, Porirua*

Bachelor of Nursing (Pacific)

Anne Allan-Moetaua
Ministry of Health, Porirua

Merianne Betham
Hutt Valley District Health Board

Rita Erika
*Capital & Coast District Health Board,
Porirua*

Folole Esera
Samoan Nurses Association, Wellington

Tevita Finau
*Vakaola Pacific Community Health,
Porirua*

Toe Fiu
Community Representative, Porirua

Sipaia Kupa
*Capital & Coast District Health Board,
Porirua*

Kupa Kupa
*Tūmaī Mō Te Iwi/Wellington
Independent Practice Association*

Faye Logovae
*Mental Health Services, Hutt Valley
District Health Board*

Siloma Masina
*Pacific Peoples Health, Hutt Valley
District Health Board*

Maria Millen
Kemp Home & Hospital, Porirua

Lee Pearce
*Pacific Support Services, Capital &
Coast District Health Board, Wellington*

Fuimaono Karl Pulotu-Endermann
*Capital & Coast District Health Board,
Wellington*

Iunita Vaofusi
Petone Union Health, Lower Hutt

Kawa Whakaruruhau

Fred Tipa
Graduate, Porirua

POSTGRADUATE NURSING

Postgraduate Certificate in Hospice Palliative Care

Dr Margaret Connor
Honorary Member, Wellington

Ann Denton
Hospice New Zealand, Havelock North

Julie Maher
Te Omanga Hospice, Lower Hutt

Dr Margaret Martin
Victoria University of Wellington

Monica O'Reilly
Capital & Coast District Health Board

Kate Reid
Hospice Palliative Care Education, Christchurch

Gaye Robertson
Mary Potter Hospice, Wellington

Anne Schumacher
Independent Advisor, Wellington

Mary Schumacher
Hospice New Zealand, Wellington

Dr Siew Tan
Te Omanga Hospice, Lower Hutt

Postgraduate Certificate in Primary Health Care Specialty Nursing

Gill Acorn
Youth Health Nurse Specialist, Lower Hutt

Erin Beatson
Royal NZ Plunket Society, National Office, Wellington

Anne Brinkman
NZ Nurses Organisation, Wellington

Catherine Fowler
Tresillian Family Care Centres, Head Office, NSW Australia

Eldred Gilbert
Capital & Coast District Health Board

Michelle Halford
Hutt Valley District Health Board

Jenny Hugtenburg
Hutt Valley District Health Board

Anna Liki-Faalenuu
Pacific Educator, Auckland

Kathy Nelson
Victoria University of Wellington

Linda Polaschek
Royal NZ Plunket Society, National Office, Wellington

Meryl Ryan
Māori Clinical Educator, Auckland

Dianne Stevens
Practice Nurse, Porirua

Postgraduate Certificate in Perioperative Specialty Nursing

Collette Breton
Hutt Valley District Health Board

Di Davies
Wakefield Hospital, Wellington

Alison Eruera
Wakefield Hospital, Wellington

Susan Garthwaite
Hutt Valley District Health Board

Mary Ann Johnson
Medtra NZ Ltd, Lower Hutt

Jenny Keene
Hutt Valley District Health Board

Chrissy Neilsen
Care Direct, Wellington

Carol Tia Tia
Wakefield Hospital, Wellington

Carol Robertson
Hutt Valley District Health Board

Susan Wayman
Southern Cross, Wellington

Myra Wilson
Medtra NZ Ltd, Wellington

PARAMEDICS

Bachelor of Health Science (Paramedic)

Don Banks
Wellington Free Ambulance

John Britton
Wellington Free Ambulance

Steve Crew
Wairarapa District Health Board, Masterton

Cheryl Goodyer
Whānau Care Services, Wellington Hospital

Sarah Hoyle
Wellington Free Ambulance

Andrew McDonell
Rural Ambulance Victoria, Australia

Kelvin McIvor
Wellington Free Ambulance

Jo Mulheron
Wellington Free Ambulance

Andrew Orange
Medicine Management Ltd, Palmerston North

Grant Pennycook
St Johns Ambulance, Palmerston North

Ruth Pettengell
Wellington Free Ambulance

Pete Roe
Wellington Free Ambulance

Ruth Stewart-Leach
Wellington Institute of Technology, Lower Hutt

Peter Van Dijk
Wellington Free Ambulance

Peter Walker
Wellington Free Ambulance

David Waters
Wellington Free Ambulance

SOCIAL AND COMMUNITY SERVICES

SOCIAL WORK

Bachelor of Social Work National Diploma in Social Work (Level 6)

Elizabeth Brown
Child Youth and Family Services, Lower Hutt

Geraldine Clifford
Taeamanino Social Services, Porirua

Lainey Cowan
Aotearoa New Zealand Association Social Work, Paekakariki

Janet Cowper
Volunteer, Porirua

Nicki Edwards
Kemp Home and Hospital, Porirua

Tevita Finau
Vakaola Pacific Community Health, Porirua

Henrietta Gemmell
Koraunui Marae, Stokes Valley

Lorene Hartley
Porirua City Council

Caroline Herewini
Women's Refuge Te Whare Tiaki, Porirua

Ida Isa'ako
Pacific Health Services, Porirua

Gabrielle Karroll
Dare Foundation, Porirua

Danniel Keith
Te Whare Marie, Capital & Coast District Health Board, Porirua

Natalie Kini
Ora Toa Health Unit, Porirua

Ester Laban
Independent Advisor, Porirua

Kitty McKinley
Challenge 2000, Johnsonville

Ross McCracken
Kapiti Safer Community Council

Noreen Palmer
Te Roopu Awhina Family Start, Porirua

Lee Pearce
Pacific Support Services, Capital & Coast District Health Board, Wellington

Tania Poirrier
IHC Central Region, Mana

Pauline Ramsay
Department of Corrections, Porirua

Cheri Ratapu-Foster
Wellink, Wellington

Margaret Saunders
Social Work, Capital & Coast District Health Board, Wellington

Noval Salomen
Child Youth and Family Services, Porirua

Mate Wae Wae
Women's Refuge, Seaview Kokiri, Lower Hutt

YOUTH WORK

Certificate in Youth Work (Christian Youth Workers)

Edward Anand
Wellington City Mission

Andy Balcar
Praxis Canterbury, Christchurch

Ross Banbury
Papanui Youth Development Trust, Christchurch

Matt Button
Northwest Mentoring Trust, Christchurch

Chris Casey
Anglican Diocese, Wellington

John Harrington
Canterbury Youth Workers Collective, Christchurch

Carol Jenkins
Te Ora Hou Otautahi, Christchurch

Lloyd Martin
Praxis, Wellington

Michelle McConnell
Praxis National, Christchurch

Faye Molen
Praxis, Wellington

Lucy Read
The Salvation Army, Lower Hutt

Leona Tiraa
Wesley Porirua

Phil Trotter
Anglican Youth Diocese, Christchurch

Colin Wood
Ilam Baptist Church, Christchurch

Christoph Zintl
South City Church, Christchurch

DIPLOMA IN YOUTH AND COMMUNITY STUDIES

National Certificate in Youth Work (Youth Work Assistant)

Fr Frank Bird
Logos Project, Auckland

Mel Dickson
Youth for Christ, Wellington

Paul Mather
Praxis Wellington

Gregg Morris
Baptist Action, Auckland

National Certificate in Tamariki Ora – Well Child Services

Anna Anderson
Raukura Hauora O Tainui, Auckland

Gladys Bedgood
Plunket Kaiāwhina, Auckland

Megan Cameron
Plunket Clinical Educator, Hamilton

Clare Ivory
Community Karitane, Auckland

Brigid Jenkinson
Clinical Educator, Christchurch

Matewika Karehana
Ngāti Whatua O Orakei, Auckland

Judy King
Ngāti Whatua O Orakei, Auckland

Lydia Kingi
Papakura Marae, Auckland

Anna Liki
Pacific Clinical Educator, Christchurch

Teeikura Masters
Plunket Kaiāwhina, Auckland

Ripeka Mocaraka
Māori Kaiāwhina Educator, Auckland

Jan Pearson
Plunket Education, Wellington

Paula Perham
Community Karitane, Auckland

Linda Polaschek
Plunket Education, Wellington

Jeff Tukua
Kaumata, Auckland

Louise Troy
Clinical Leader, Counties Manukau

Te Aomarama Wilson
Māori Caucus Board, Auckland

TEACHER EDUCATION

EARLY CHILDHOOD EDUCATIONAL STUDIES

Bachelor of Teaching (Early Childhood Education) ***Diploma in Teaching (Early Childhood Education)*** ***Certificate in Early Childhood Education (Introductory)***

Amanda Coulston
Free Kindergarten Association, Wellington Region

Dr Sarah Farquhar
Independent Advisor, Porirua

Diane Fazakerley
Nga Tamariki, Lower Hutt

Suzie MacVicar
Childcare Centre Supervisor, Wellington

Teresa Martin
Best Beginnings Early Learning Centre Ltd, Tawa

Tasi Pereira
Community Representative, Porirua

Diana Pierce
Chelsea House, Early Learning Centre, Raumati

Bronwyn Pullen
Bronwyn's Place Preschool, Porirua

Lynlee Shaw
Te Whare Ako Childcare Centre, Petone

Lolenese Siu
Community Representative, Wellington

Joe Vakaloloma
Community Representative, Porirua

ADULT TEACHER EDUCATION

Certificate in Adult Learning and Teaching ***Diploma in Adult Learning and Teaching***

Pip Byrne
Polytechnic Advisor

Jill Clark
Graduate, Porirua

Clare Hazledine
Polytechnic Advisor

Kathy Holloway
Polytechnic Advisor

Rachel Patrick
Polytechnic Advisor

Stephen Wickens
Polytechnic Advisor

FACULTY OF SERVICE INDUSTRIES AND TRADES

BUSINESS AND MANAGEMENT

BUSINESS ADMINISTRATION

Certificate in Administration
Certificate in Office Administration and Computing (Introductory, Intermediate, Advanced, Contact Centre)
Certificate in Office Skills/Computing
Certificate in Retail Management
Certificate in Retail and Cosmetic Services
National Certificate in First Line Management
National Certificate in Business Administration & Computing (Level 2)
National Certificate in Computing (Level 2)
Short Course Certificate in MYOB (Accounts)
Short Course Certificate in Computer Applications

Dale Hartle
Porirua City Council, Porirua

Fay Harrison
Industry Consultant, Wellington

Jeanette Hourigan
Independent Advisor, Hutt City

Anne Le'aupepe
Capital Coast District Health Board, Porirua

Eth Lloyd
Enderby Associates, Waikanae

Sue Nepe
The Association of Administrative Professionals New Zealand, Porirua

Louise Reid
Hairdressing ITO, Wellington

Joanne Wilton
Contact Energy, Levin

CATERING AND HOSPITALITY

Certificate in Professional Cookery (incorporating the City and Guilds Certificate and Diploma in Cookery)
Certificate in Professional Kitchen Management (incorporating the City and Guilds Advanced Diploma in Culinary Arts)
Certificate in Café Service
National Diploma in Hospitality Management (Level 5)

Donni Allum
Oceana Café, Plimmerton

Selena Bermath
Hospitality Standards Institute, Wellington

Pat Mattinson
Hospitality Standards Institute, Wellington

Rob Rangī
Mungavin Blues Restaurant, Porirua

Sarah Rangī
Mungavin Blues Restaurant, Porirua

Murray Reeve
Bucket Tree Restaurant, Tawa

Belinda Wotton
The Peppermill, Porirua

SERVICE SECTOR

BEAUTY AND HAIRDRESSING

Certificate in Beauty and Hairdressing
Certificate in Beauty Services
Certificate in Beauty Therapy
National Certificate in Hairdressing (Salon Support)(Level 2)
National Certificate in Beauty Service (Level 4)
National Certificate in Body Therapy (Level 5)

Amanda Anthoson
Woodcote Lodge, Paraparaumu

Maureen Bowring
Hair Craft Centre, Tawa

Pene Burns
Hairdressing ITO, Wellington

Hamish Gregg
Therapy Wellbeing and Beauty, Wellington

Jo Hall
Mystique Beauty Clinic, Wellington

Sarah Hansen
North City Pharmacy, Porirua

Angelique Simmonds
Beauty Therapist, Tawa

Simmons Spackman
Dermal International, Auckland

Larissa Sulzberger
Blue Cactus Hairdressing Ltd, Wellington

Kay Urlich
Shakina for Hair, Porirua

FLORISTRY AND HORTICULTURE

National Certificate in Floristry (Level 2)

Graham Bruce
Porirua City Council Nursery

Claire Clark
Camp Elsdon, Porirua

Mary Dinniss
Horticulture Industry Training Organisation, Wellington

Ben Hoyle
Blue Geko, Paraparaumu

Murray Opie
Festival Hire, Porirua

Ra Pomare
Te Runanga o Toa Rangatira Incorporated, Porirua

Tony Tomlin
Growsafe, Porirua

SPORTS AND RECREATION

OUTDOOR ADVENTURE

Certificate in Outdoor Adventure
Certificates in Outdoor Leadership (Abseil Instructor, Abseil Leadership, Alpine Instructor, Alpine Leadership, Bush Instructor, Bush Leadership, First Aid Instructor, Maintaining Safety, Medical Leadership)
Diploma in Outdoor Adventure
Diplomas in Outdoor Leadership (Outdoor First Aid, Bush, Alpine, Abseil or HUNTS)

Chris Hall
NZ Mountain Safety Council, Wellington

Joe Green
NZ Mountain Safety Council, Wellington

Phil Henry
Independent Advisor, Raumati

Mike Spray
NZ Mountain Safety Council, Wellington

TRADES

AUTOMOTIVE

Certificate in Automotive Engineering (Advanced)
Certificate in Automotive Engineering
National Certificate in Motor Industry
Entry to Automotive Trades

David Bowler
Bowler Motors Ltd, Otaki

Ian Capewell
Plimmerton Motors, Porirua

Paul Cooksley
Part Master, Lower Hutt

Wayne Dorgan
Wayne Dorgan Auto Repairs, Titahi Bay

Harry Friedlander
Motor Trade Association, Wellington

Greg Maraku
Porirua

Craig Martin
Rutherford & Bond Toyota, Porirua,

Nick McGirr
Motor Training Organisation, Wellington

Robert Pauletic
*Land Transport & Safety Authority,
Wellington*

Eoin Stuart
North City Motors, Porirua

CARPENTRY AND PLUMBING

***Certificate in Carpentry
Certificate in Plumbing, Drainlaying,
Gasfitting and Roofing
Certificate in Trade Skills***

Daryl Bradford
*Building & Construction ITO,
Wellington*

Gavin Chambers
Mander Plumbing Ltd, Johnsonville

Duncan McLennan
Mac-Dee Construction Ltd, Papakowhai

Peter Murton
Murton Timbercraft, Porirua

Graham Paton
*Building & Construction ITO,
Wellington*

Brent Tuohy
Tuohy Homes Ltd, Plimmerton

Shane Warren
Porirua Apprentice Trust, Porirua

Doug Wilson
Plumbing ITO, Wellington

ELECTROTECHNOLOGY

Certificate in Electrical Engineering

Paul Craven
Electro Technology ITO, Lower Hutt

Terry Govenlock
Waikanae

Chris Jones
*Telecommunications Education Skills
Standards Organisation, Wellington*

Manu Katene
NZice, Tawa

Tim Scholes
New Power Ltd, Porirua

Stephen Watson
Sinclair Knight Merz Ltd, Wellington

TRANSPORT

***Aviation
Certificate in Aviation (Helicopter)
Certificate in Aviation (Helicopter)
Turbine
Certificate in Aviation (Helicopter)
(Advanced)
Diploma in Aviation***

Graeme Barrell
Kapiti Aero Club, Paraparaumu

Sandra Boyd
Kapiti Air Academy, Paraparaumu

Eru Brown
Kapiti Air Academy, Paraparaumu

Richard Bull
Kapiti Air Academy, Paraparaumu

Paul Harrison
Kapiti Air Academy, Paraparaumu

Daneka Hyndman
Heliflight NZ Ltd, Auckland

Andy McKay
Heliflight NZ Ltd, Auckland

Rob Rackliffe
Heliflight NZ Ltd, Masterton

COMMERCIAL ROAD TRANSPORT

***Certificate in Commercial Road
Transport
Certificate in Road Transport***

Darlene Adams
Mana Transport, Porirua

Paul Adams
*NZ Road Transport Association, Lower
Hutt*

James Cameron
Infratrains NZ, Paraparaumu

Mike Dennehy
*Central Area Road Transport
Association, Lower Hutt*

Alan Eager
Porirua City Towing, Porirua

Tony Lansdown
*NZ Road Transport & Logistics ITO,
Wellington*

Bruce Morgan
*NZ Road Transport and Logistics ITO,
Wellington*

Kerry Waddell
Mana Coach Services, Porirua

Russel Walsh
*NZ Road Transport & Logistics ITO,
Wellington*

TRAVEL AND TOURISM

***Certificate in Outdoor Cultural
Tourism
Certificate in Tourism
Diploma in International Tourism
(incorporating the City and Guilds
Diploma in Tourism)
Certificate in Travel
Certificate in Travel (Advanced)***

Chris Barber
Enterprise Coast, Levin

Sally Kennedy-Clark
Trilogy Travel, Paraparaumu

Maeleen Owen
Porirua Visitor Centre

Gloria Reynolds
Harvey World Travel, Waikanae

Gaylene Sanderson
Enterprise Coast, Levin

Paul Singh
Enterprise Coast, Levin

QUALITY REINVESTMENT PROGRAMME STAGE 2

QUALITY REINVESTMENT PROGRAMME (QRP) STAGE TWO

The purpose of the five-year Quality Reinvestment Programme (QRP) administered by the Tertiary Education Commission (TEC) is to support Institutes of Technology and Polytechnics (ITPs) and Wānanga to achieve alignment of certificate and diploma level education with the Statement of Tertiary Education Priorities (STEP) and the needs of learners, employers, their communities and New Zealand as a whole.

Whitireia received \$750,000 (inclusive of GST) under the Quality Reinvestment Programme (QRP) Stage 2 to undertake projects focused on operational capability, programme viability and sustainability and to complete strategic reviews in response to the changing funding and policy environment.

PROJECT 1: BUILD CAPABILITY

Aim: To build the Polytechnic's capability, initially in relation to managing the QRP efficiently and effectively through all stages and the development of quality management information systems.

Outputs

- Full review of Whitireia management information systems completed, with a roadmap and priorities for development including quick fixes and the identification of projects that may be undertaken in collaboration with other ITPs including an upgrade of the student data management system.
- Management of QRP stage 2 project delivery and the development of the Polytechnic's QRP Stage 3 inclusive of timeframes for the roll-out of QRP 3 funding including financial information.

PROJECT 2: VIABILITY AND SUSTAINABILITY OF LOCAL PROVISION

Aim: To review local provision (Porirua, Kapiti and Wellington City) to ensure that it meets the needs of its communities including Māori and Pacific. The focus of the analysis was on viability, relevance, demand and delivery methods. Also to sustain key loss-making programmes that exemplify the special character of Whitireia.

Outputs

- Full programme analysis completed, identifying viability and strategic fit of all Wellington region programmes. Programmes considered in a strategic context of: Māori and Pacific uptake, alignment to STEP, Community demand, pathways, industry involvement, flagship nature, student completion, success and satisfaction. Full attributed cost report on all programmes developed. Report on viability and strategic relevance produced.
- Report produced with recommendations for development in Stage 3
- Key loss-making programme sustained, and a budget to support strategically relevant non-viable programmes completed.
- Exit strategies/costs for programmes no longer viable and/or relevant developed.

PROJECT 3: REGIONAL PROVISION

Aim: To enhance the regional network of provision, including projects to advance the Wellington Regional Polytechnic Federation (WRPF) and to undertake a review of vocational and applied training provision in Wellington City.

Outputs

- Wellington Regional Polytechnic Federation (WRPF) established, involving Whitireia Community Polytechnic, the Wellington Institute of Technology (WelTec) and the Open Polytechnic of New Zealand with the vision of improving the effectiveness and efficiency of the applied and vocational tertiary education services provided to students and other stakeholders within the region. WRPF projects completed in 2006 included a pilot programme to establish a framework to assess collaborative opportunities in respect of teaching and learning programmes, and a project to scope the enablers and the barriers to regional partnerships and collaboration. Both projects have produced strategies and projects to advance the WRPF vision in 2007 and beyond.
- A report was completed scoping the applied and vocational training provision within Wellington City.

PROJECT 4: NATIONAL PROVISION

Aims: To review the medium-term financial viability and strategic direction of the Auckland campus, to facilitate the transfer of the Polytechnic's Otahuhu ESOL provision to Manukau Institute of Technology and to review out-of-region contracting arrangements.

Outputs

- Deloitte produced a report on the medium-term financial viability and strategic directions for the Auckland campus, with options, costs/benefits and future directions considered alongside possible exit strategies.
- The Polytechnic's Otahuhu ESOL provision has been transferred to Manukau Institute of Technology.
- Out-of-region contracting arrangements were reviewed and reported to TEC.