

New Kāpiti campus under construction

The new Whitireia Kāpiti campus on the corner of Milne Drive and Kāpiti Road is now in development.

Since selecting the new location in late 2010, Whitireia have been working with TSE Architects, CPG Planners and NDY Engineers on designing and planning a new state of the art, contemporary facility that will be home to "Whitireia in Kāpiti".

Expressions of interest for lead contractor, for the redevelopment work were called for in July 2011. A number of expressions were received and reviewed and as a result, Freear Philip Limited has been selected as the lead contractor to undertake all the work required to complete the redevelopment of the old Mitre 10 building and convert it into a 21st century student and community hub.

Freear Philip Limited have commenced work and are currently working inside the building doing necessary electrical, plumbing and foundation work before starting work on a new mezzanine floor and the remainder of the internal fitout.

Whitireia has a comprehensive plan in place to see the development of this campus through. As major milestones are reached we will bring you updates on these, the progress that this new campus is taking and how it is shaping up. Our goal is to have the new campus operational in January 2012, ready for the start of the new academic year.



Artist's impression – internal view of the new Kāpiti campus

Facilities at the new Kāpiti campus

Alongside classrooms, amenities and staff offices the new campus will have a range of specialist facilities to support programmes and for use as a community facility. These facilities include:

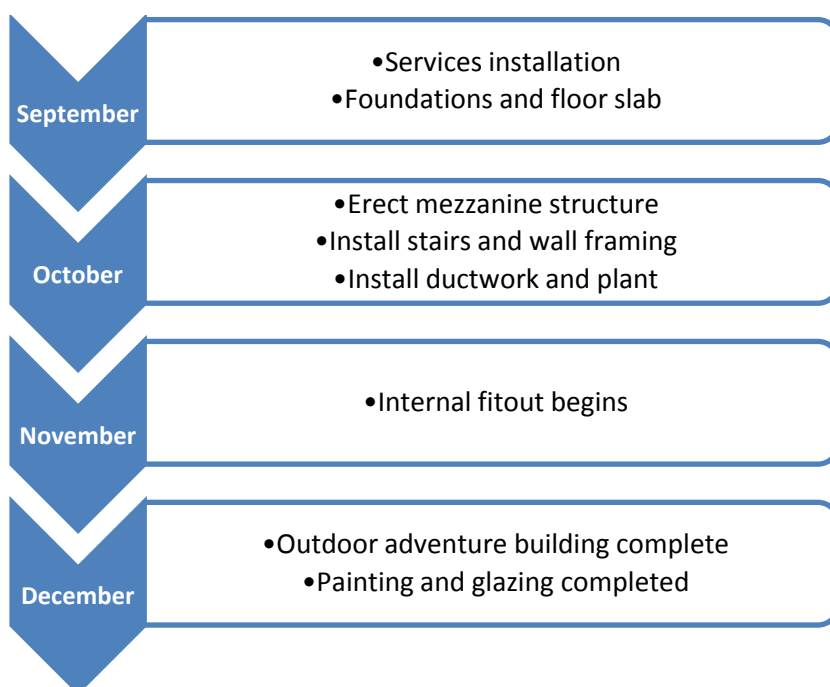
- Commercial kitchen and training restaurant
- Beauty and Hairdressing salons
- Outdoor adventure facility
- Library and study hub
- Videoconferencing facilities
- Breakout areas and meeting rooms
- Training cafe and bar
- Library and study hub
- Climbing wall
- Computer suite
- Full wireless broadband
- Function and event facilities

Construction work begins – September 2011



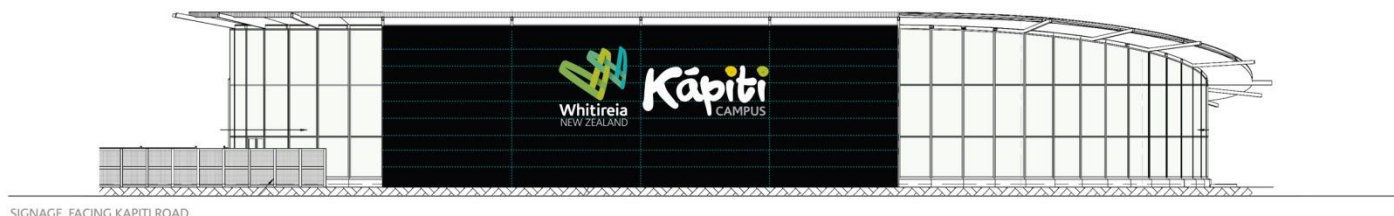
Concrete is being dug up and key services are being installed

Key milestones



New signage for Kāpiti campus

Having a new campus means fresh new signage has been required also. Whitireia have been working with Tangerine Design Limited to come up with new signage that is contemporary, fresh and fits the local landscape. We are pleased with the result and hope you like it too!



Thank you for sharing our vision and commitment to tertiary education in the Kāpiti region and the need for a new attractive learning environment to support this. We look forward to sharing the development of the new campus with you.

If you have any questions about the new campus please email us at marketing@whitireia.ac.nz.

If for any reason you do not wish to receive updates on the campus development, or know of anyone who would like to receive them, please email marketing@whitireia.ac.nz.