

TABLE OF CONTENTS

FOREWORD – COUNCIL CHAIRPERSON	3
CHIEF EXECUTIVE'S REPORT	5
COUNCIL COMPOSITION	8
SUMMARY OF KEY ACHIEVEMENTS	9

SERVICE PERFORMANCE STATEMENTS

STATEMENT OF SERVICE PERFORMANCE	10
EDUCATION PROGRAMMES PERFORMANCE	24
PERFORMANCE MEASURES DEFINITIONS	30

FINANCIAL STATEMENTS

STATEMENT OF ACCOUNTING POLICIES	31
STATEMENT OF FINANCIAL PERFORMANCE	35
STATEMENT OF MOVEMENT IN EQUITY	36
STATEMENT OF FINANCIAL POSITION	37
STATEMENT OF CASH FLOWS	38
RECONCILIATION OF THE NET SURPLUS ON OPERATIONS WITH THE NET CASH FLOWS FROM OPERATING ACTIVITIES	39
STATEMENT OF COMMITMENTS	40
STATEMENT OF CONTINGENT LIABILITIES	41
NOTES TO THE FINANCIAL STATEMENTS	42
MANAGEMENT STATEMENT	51
REPORT OF THE AUDITOR-GENERAL	52

APPENDICES

APPENDIX 1 SPECIAL SUPPLEMENTARY GRANT	54
APPENDIX 2 PROGRAMME ADVISORY COMMITTEES	55
APPENDIX 3 EQUAL EDUCATIONAL OPPORTUNITIES ACTIVITIES	63



CHAIRPERSON'S FOREWORD

Dennis Sharman

As Chair of the Whitireia Community Polytechnic Council, it gives me great pleasure to introduce this annual report for the academic year 2005, and to report on the ongoing success of Whitireia in a wide range of activities and developments.

2005 will be seen by the tertiary sector as a year of significant change. Early in 2005, the Government, through the Tertiary Education Commission (TEC), signalled a range of impending changes which would impact significantly on the sector. The tertiary sector is working with Government to implement those changes, but progress on finalising an appropriate funding model is still seen as a critical factor.

While Whitireia managed the changes in the tertiary sector, we never lost sight of what was important to the students and the communities we serve. Our students and our contribution to the economic wellbeing of those communities are our focus as we strive to enable our students to fulfil their learning potential.

Graduations at Whitireia are as diverse as the students and communities that we serve. However, at each of the graduations the one underlying theme expressed by the graduating students and their families is that success at Whitireia is achieved through the hard work of the students and the Whitireia staff that support their learning. Learning at Whitireia can be a life changing event and at our graduations we see this time and again. It is our people that make the difference. Thank you to the staff at Whitireia.

There was high employment in 2005, which saw student numbers decrease across the whole tertiary sector. Although our student numbers dropped slightly on 2004, we were pleased that we reached our domestic student targets. International student numbers decreased significantly across the sector, and while we did not reach our international student target our international programme continues to develop.

In 2005, there were a number of changes to the funding of the sector and those changes have impacted on our bottom line. With continued prudent financial management by all staff, we were still able to reach an operating surplus. While there will be new funding opportunities in 2006, overall, the financial situation in the sector will continue to remain tight.

The Prime Minister, the Right Honourable Helen Clark opened Te Kete Wānanga - The Learning Centre in May. This \$7.5 million building is a fantastic addition to our Porirua campus. This came in under budget and within the scheduled time frame. During 2005, the Council decided to defer the construction of the Health, Education and Social Sciences (HEdSS) building owing to the uncertainty about the potential impact of changes to the funding by TEC and the slowdown in growth in student numbers. Council felt that the project should not continue until the impacts of those changes were known. The HEdSS building will be considered again by Council in 2006; as will the rest of the campus redevelopment plan as funding allows.

2006 will continue to be a challenging year with the continued downturn in the International sector and the continued restructuring of funding by TEC. However, Whitireia is well placed to face this changing environment. We will continue to consult with our communities, to understand their needs and aspirations, and we will continue to deliver applied vocational training and education which will make a difference to their employment opportunities and their lives.

The continued success of Whitireia lies with our Chief Executive, Deirdre Dale, her management team, and the staff. In 2005, Deirdre continued to provide the leadership and vision for Whitireia that has seen it prosper in the tertiary sector. I would like to thank her for her dedication and hard work over the years. I would also like to express my appreciation to the Whitireia Council for their work through the year and to Suzanne Snively for her support as Deputy Chair.

Congratulations to all of the students who successfully completed their courses in 2005. As you pursue your knowledge and careers, remember life long learning is a must and Whitireia Community Polytechnic will always be here to assist you.

Dennis Sharman
Chair



CHIEF EXECUTIVE'S REPORT

Deirdre Dale

Tena koutou katoa, Talofa lava, Kia orana, Faka lofa lahi atu, Taloha ni, Bula vinaka, Malo e lelei, Namasti, Nihau, Konichiwa, Greetings.

The year 2005 was another exciting year of achievement and challenge for Whitireia with positive outcomes in all key performance areas.

STUDENT LEARNING STUDENT ENROLMENTS AND OUTCOMES

Despite a general decrease in enrolments around the country, domestic student enrolments at Whitireia showed a small increase on 2004 figures at 4.3%, with a total of 3,238 Equivalent Full-time Students (EFTS). Although we would always want to do better, good completion and success rates were maintained at satisfactory levels of 84% and 73% respectively. Student satisfaction achieved a high of 95%.

Quality assurance systems rigorously applied ensured quality delivery across all programmes. New programmes delivered in 2005 included Diplomas in Māori Land Court Law – He Kohikohinga a Te Iwi Māori and in Youth and Community Studies, Certificates in Café Service, Teaching English as a Second Language, and Plumbing, Gas fitting, Drainlaying and Roofing. Two new degree programmes – Bachelor of Applied Arts and Bachelor of Teaching (Early Childhood Education) were approved during 2005 for delivery in 2006.

Further progress has been made in modularisation, e-learning and mixed mode delivery to facilitate accessibility and flexible options for students.

PACIFIC

The first Bachelor of Applied Business degrees were awarded at the annual graduate ceremony in Tonga in early July. These students had completed a NZ Diploma in Business – taught in Tonga under Whitireia accreditation – and had subsequently come to Whitireia to complete a “bridging” summer school and then a final year of study to qualify for their degree. It is exciting to see this project coming to fruition after much good work from many people following the signing of the original Memorandum of Understanding in 1997.

We have a number of initiatives underway in the Cook Islands. These are focused on hospitality/tourism, business administration and retailing. As the people of the Cook Islands are New Zealand citizens we can access Tertiary Commission (TEC) EFTS funding to support these distance learning programmes. Where courses are provided in the Cook Islands, they must meet full costs.

INTERNATIONAL

We continued our major internationalisation strategy in building exchange relationships with key institutions in a number of countries as relevant to our programmes. This is a relatively simple and largely risk free strategy which also supports the objective of other countries to internationalise tertiary education opportunities for students. During the year Whitireia hosted visitors from ten different countries and agreements were signed with institutions in China, Japan and Switzerland.

My work with the Institutes of Technology and Polytechnics of New Zealand (ITPNZ) Internationalisation committee, the Board of Education New Zealand and the Ministry of Education's Internationalisation Advisory Committee ensures that the planned Whitireia developments are well informed and soundly based.

COMMUNITY ENGAGEMENT AND
COMMUNITY DEVELOPMENT

The Pacific liaison team continues to flourish and strengthen. A further series of Pacific community meetings has seen further planning towards the undergraduate Pacific Studies programme which the communities have put forward for consideration. There has been a substantial and positive response from each Pacific community which augurs well for the future of the proposed new programme.

INDUSTRY AND BUSINESS
ENGAGEMENT AND REGIONAL
DEVELOPMENT

We appreciate the contribution from employers who serve on our Programme Advisory Committees to ensure the continuing relevance of the qualifications we offer.

Whitireia has been well-represented at the Strategic Partners Forum which contributed to development of the Wellington Regional Strategy. The aim of the Forum was to ensure a pragmatic strategy to achieve the overall objective of ensuring that the greater Wellington metropolitan area is internationally competitive, has a vision and an integrated framework that will ensure sustainable economic growth.

The Wellington Region Tertiary Education Cluster involving the Chief Executives from the five Wellington-based Tertiary Education Institutions, has emphasised the importance of connected capabilities and co-ordinated approaches which could see the region speaking with a united voice.

The Whitireia contribution to economic development was a focus within the major Kapiti Strategic Development Review conducted mid-year and we also contributed to the Porirua City Economic Development Workshops.

We were delighted that Whitireia won the award for the Best Supporting Business in the 2005 Porirua Business Awards. It is pleasing to have that recognition of Whitireia as a sound business and as providing essential support for other businesses in Porirua.

CHANGES IN GOVERNMENT
POLICIES AND FUNDING

Changes in Government policy, especially in relation to funding, continue to present major challenges.

In May the Minister of Education, the Honourable Trevor Mallard announced far-reaching funding changes. While his comments came as no surprise – they had been signalled for some time – the immediate all-inclusive focus on a number of different facets, and the speed with which it was proposed to proceed, presented significant funding impacts and consequently major challenges for Whitireia and for all other Institutes of Technology and Polytechnics.

In addition to the speed of the changes the critical initial difficulties were the lack of clarity about actual impacts and the lack of time for consultation to ensure that impacts were understood. However, much focused work over the year has seen a more managed process and more clearly delineated plans developed in consultation with the sector.

A future issue which involves both TEC and the Ministry of Education is the increasing emphasis on monitoring and comparing retention, completion and success rates, with the withdrawal of funding as a consequence for poorly performing providers.

There does not seem to be much evidence that this process would have a positive effect for student outcomes but it appears to have strong political support. There are major associated concerns about definitions and the integrity of any data collected.

Although the Whitireia current success rates are well within the initial guidelines, if that were to change then, unfortunately, the easiest way to address that would be to increase the entry level for enrolment. That could mean ruling out opportunities for many of the second-chance learners who come to Whitireia.

CAMPUS DEVELOPMENT

Considerable time and effort during 2005 has been focused on the campus developments to ensure that high quality learning facilities are available for all our students.

January saw the official opening of the new Auckland Campus at 450 Queen Street, and in May we celebrated the completion of the Award-winning Te Kete Wānanga – The Learning Centre at Porirua. Both these facilities are much appreciated by staff and students alike.

Other developments have focused on premises at Manchester Street, Paraparaumu and Prosser Street in Elsdon. The Customer Services area for enrolments and academic registry was substantially upgraded to provide a welcoming and accessible service for all students. It has been great to see the use being made of the new student quad area created by the new buildings. Pōwhiri, graduations and guest performances have featured in the area.

STAFF

A tertiary education organisation is only as good as its staff. At Whitireia we are indeed fortunate to have so many talented people in our academic and allied staff who work so hard to deliver on the commitments we make to our students. I extend grateful thanks to you all.

Pio Terei's presentation at Staff Development Day was a highlight for staff – both very funny and very moving, with a clear understanding of Whitireia values and commitments.

Staff research activities have advanced considerably during the year with a significant 25% increase in research outputs and a number of staff (from Nursing, Business Studies and Information Technology) presenting papers at international conferences.

I particularly acknowledge with much appreciation the work and support from the Directorate team - Paul Bryant, Susan Cauchi, Val Collins, Moana Hilliard, Hone Hurihanganui, Bruce Miller and Pat Stuart; the Faculty Deans – Trish Brimblecombe (to 30 June), Mike Fermanis, Helen Gardiner, Drew James, Kaye Jujnovich (Assistant Dean), Margaret Southwick and Stephen Wickens; and the Council Chair, Dennis Sharman and Deputy Chair, Suzanne Snively. Whitireia has a strong Council and this year it has been useful to be able to use their combined wisdom as a sounding board to develop ideas.

As I approach the end of my time at Whitireia, I am conscious of the wonderful opportunities I have been given to assist in making a real and positive difference in people's lives. I have been most fortunate to have been able to play my part and to work alongside esteemed colleagues whose friendship I will always value.

Deirdre Dale
Chief Executive

COUNCIL COMPOSITION

Dennis Sharman (*Chair*)
Ministerial Appointee

Suzanne Snively (*Deputy Chair*)
Ministerial Appointee

Aka Arthur
Ngāti Toa, Local Iwi Appointee

Heather Bradley
Allied Staff at Whitireia Community Polytechnic

Deirdre Dale
Chief Executive at Whitireia Community Polytechnic

Gregory Fortuin
Co-opted Appointee (*from October 2005*)

Carmel Haggerty
Academic Staff at Whitireia Community Polytechnic (*from June 2005*)

Greg Henderson
Students' Representative

Mary Manderson
Academic Staff at Whitireia Community Polytechnic (*to May 2005*)

Caroline Mareko
New Zealand Council of Trade Unions

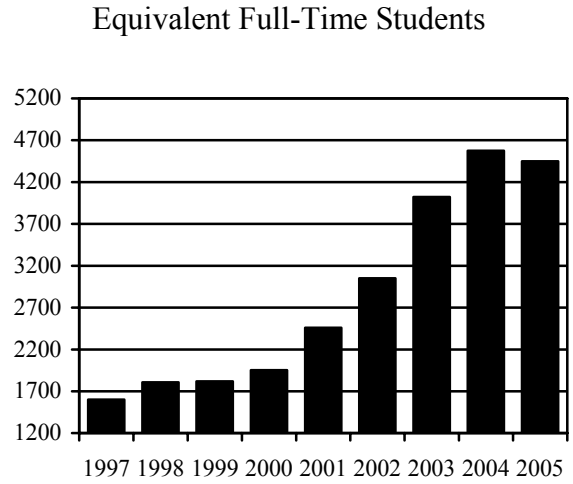
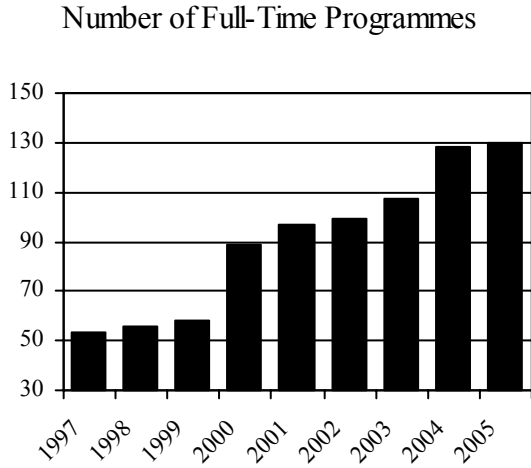
Allan Nichols
New Zealand Employer and Manufacturers Association

Caren Rangi
Ministerial Appointee

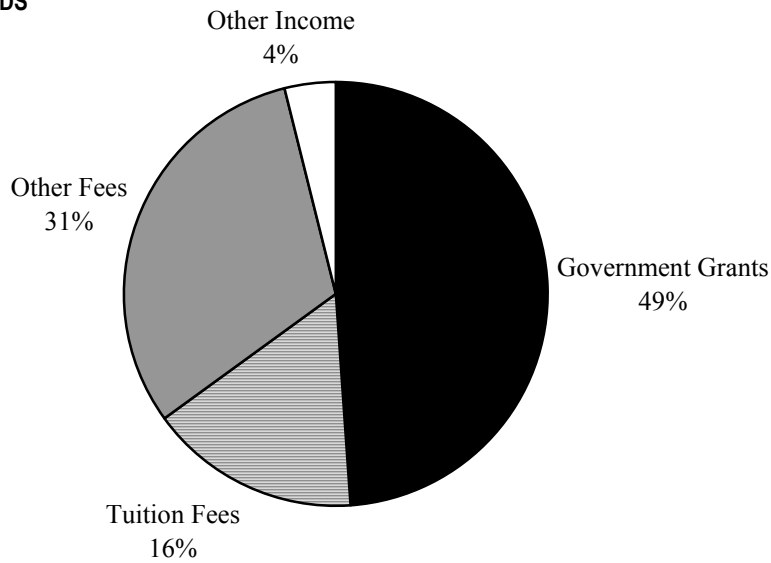
Ron Wilkinson (*Audit Committee Chair*)
Ministerial Appointee

SUMMARY OF KEY ACHIEVEMENTS - 2005

INSTITUTIONAL GROWTH



SOURCE OF FUNDS



GRADUATE PERFORMANCE

Student Success Rate:

Target	65%
Actual	73%

Graduate Destination:

Moved to Employment	76%
Further Education	24%
Other Outcomes	0%

Employer Satisfaction with Graduates:

Level of Skills	95%
Level of Knowledge	95%
Relevance of Qualification	93%

PROGRAMME QUALITY

Student Satisfaction with:

Overall Programme	95%
Standard of Teaching	94%
Useful Content	98%

All programmes have NZQA/NZPPC/ Academic Board approval / accreditation.

All programmes are guided and advised by Industry Advisory Committees

STATEMENT OF SERVICE PERFORMANCE

OVER-ARCHING GOAL

Demonstrating leadership in the tertiary education sector in implementing the Treaty of Waitangi.

OBJECTIVE 1

PERFORMANCE

The Treaty of Waitangi partnership is represented in the membership of all decision-making bodies in the polytechnic.

Performance Measure: The Council, Directorate, Academic Board and Academic Standards Committee include at least one member of tangata whenua.

This objective was achieved. Tangata Whenua were represented on all major decision-making committees as follows:

Council	3	members
Directorate	1	member
Academic Board	3	members
Academic Standards Committee	2	members

OBJECTIVE 2

PERFORMANCE

Our commitment to the Treaty of Waitangi is reflected in programme content and delivery.

Performance Measure: The Treaty of Waitangi component is included in at least 60% of polytechnic programmes.

This objective was achieved. A Treaty of Waitangi component is built into around 80% of teaching programmes offered at Whitireia campuses.

GOAL 1

To extend the range, relevance and quality of learning opportunities offered to students to enhance their potential, particularly for employment locally, nationally and internationally.

OBJECTIVE 3

PERFORMANCE

Vocational and applied programmes are delivered to increasing numbers of equivalent full-time students (EFTS) each year.

Performance Measure: Vocational and applied programmes are delivered to at least 5,000 EFTS in 2005.

This objective was not achieved. In 2005, vocational and applied programmes were delivered to 4,459 equivalent full-time students (EFTS). Student numbers were lower than expected in 2005 at Whitireia and most other polytechnics across the country, probably because of the strong domestic labour market and reduction in international student numbers across the country.

OBJECTIVE 4

PERFORMANCE

All programmes offered to students meet the quality standards required for recognition, approval and accreditation.

Performance Measure: All qualifications taught each year gain recognition, approval and accreditation as required by the Academic Board and ITP Quality or NZQA.

This objective was achieved. All qualifications taught in 2005 had recognition, approval and accreditation as required by the Academic Board, ITPQ and NZQA. The following new qualifications and short courses were approved in 2005. Some of these qualifications were updated versions of programmes previously offered by the polytechnic.

- Postgraduate Certificate in Nursing (Mental Health)
- Bachelor of Applied Arts (Music) or (Performing Arts) or (Creative Writing) or (Visual Arts)
- Bachelor of Applied Business Studies (*Finance Major*)
- Bachelor of Teaching (ECE)
- Diploma in Not for Profit Management
- Diploma in Marketing
- Diploma in Management
- Diploma in HR Management
- Diploma in Accounting
- Certificate in Small Business Management
- Diploma in Performing Arts (Advanced)
- Diploma in Performing Arts
- Diploma in Youth and Community Studies
- National Certificate in Computing (Level 2)
- National Certificate in Floristry (Level 2)
- National Certificate in Journalism (Introductory)
- National Certificate in Hospitality (Introductory Cookery) Level 2
- Certificates in Intensive General English:
 - Beginner
 - Elementary
 - Pre-Intermediate
 - Intermediate
 - Upper Intermediate
 - Advanced
 - Academic
- Certificate in Māori Pacific Performance
- Certificates in Office Administration and Computing
 - Introductory
 - Intermediate
 - Advanced
 - Contact Centre
- Certificate in Road Transport
- Legal Executives Certificate

Short Courses

- Straight 2 Work - Civil Construction
- Short Course Certificate - Nail Technology
- Short Course Certificate - Health Degrees Pre-Entry
- Short Course Certificate – Introduction to Clinical Supervision
- Short Course Certificate in Clinical Supervision (Advanced)
- Short Course Certificate for Nursing Registration
- Short Course Certificate in MYOB (Accounts)
- Short Course Certificate – Basic Offshore Safety Induction and Emergency Training (BOSIET)
- Short Course Certificate in Avalanche Safety
- Short Course Certificate Drivers Licence Endorsement (Wheels, Tracks, Rollers)
- GROWSAFE® Introductory Certificate

<p>OBJECTIVE 5</p> <p>The polytechnic maintains its quality assured status from ITP Quality.</p>	<p>PERFORMANCE</p> <p><i>Performance Measure: ITP Quality's external academic audit process confirms the polytechnic's quality assured status.</i></p> <p>This objective was achieved. Whitireia currently has quality assured status from ITP Quality. This provides the polytechnic with a quality assurance status that is recognised nationally and internationally. In 2004, ITP Quality conducted a Mid-Term Academic Audit and confirmed Whitireia's quality assured status and institutional accreditation until 2006.</p>
<p>OBJECTIVE 6</p> <p>Teaching staff are supported to improve their teaching qualifications and professional competence.</p>	<p>PERFORMANCE</p> <p><i>Performance Measure:</i></p> <ul style="list-style-type: none"> • <i>At least 95% of current full-time teaching staff complete at least 10 days of staff development annually to improve their adult teaching qualifications and update professional competence</i> • <i>At least 75% of new full-time teaching staff either have a recognised qualification in adult education or are studying towards such a recognised qualification</i> <p>The objective for professional development was not fully achieved. Eighty-eight percent (88%) of full-time teaching staff completed at least 10 days of professional development to improve adult teaching qualifications and update professional competence.</p> <p>The objective for teaching qualifications was achieved. Eighty-one percent (81%) of new full-time teaching staff either hold or are studying for a recognised qualification in adult education.</p>
<p>OBJECTIVE 7</p> <p>Allied staff are supported to improve their qualifications and professional competence.</p>	<p>PERFORMANCE</p> <p><i>Performance Measure: At least 95% of full-time allied staff complete at least two days of staff development annually to update their professional competence</i></p> <p>This objective was achieved. Ninety-eight percent (98%) of allied (non-teaching) staff completed at least two days of staff development to update their professional competence.</p>
<p>OBJECTIVE 8</p> <p>The quality of staff performance is monitored annually.</p>	<p>PERFORMANCE</p> <p><i>Performance Measure: All staff undergo an annual performance appraisal and development process</i></p> <p>The objective was achieved. All (100%) of current full-time academic and allied staff undertook an established annual performance appraisal and development review process in 2005. This annual performance review was used to negotiate individual professional development plans and leave plans for the coming year.</p>
<p>OBJECTIVE 9</p> <p>Pathways are developed from entry level to more advanced programmes within the polytechnic and with other regional education providers</p>	<p>PERFORMANCE</p> <p><i>Performance Measure: Pathways to higher qualifications and credit transfer arrangements with regional universities are documented for each major subject area and updated annually</i></p> <p>This objective was achieved. In 2005, all faculties documented pathways for students from entry level to higher levels of qualifications within the polytechnic and with other regional education providers.</p> <p>Credit transfer agreements exist with regional Wellington universities, i.e. Victoria University of Wellington and Massey University.</p>

OBJECTIVE 10**PERFORMANCE**

The relevance of each new qualification is supported and monitored by external stakeholders.

Performance Measure: Industries, businesses, iwi, community groups and professional bodies, as appropriate, are consulted in the development of all new qualifications approved by the Academic Board

This objective was achieved. All new programmes are supported and monitored by external stakeholders. Industry, business, iwi, community groups and professional bodies are consulted in the development of new qualifications approved by the Academic Board.

OBJECTIVE 11**PERFORMANCE**

The relevance of each current programme is supported and monitored by external stakeholders.

Performance Measure: Each programme has an Advisory Committee which meets at least three times a year and monitors the relevance of current programmes

This objective was largely achieved. A total of thirty-one Programme Advisory Committees met during 2005. Membership consisted of representatives of relevant industries, businesses, iwi, community groups and professional bodies. All but two programmes (Community Services and Pacific Community Health Workers Certificate) did not hold formal Advisory Committee meetings, staff maintained a variety of informal links with stakeholders and plan to reassess faculty advisory committees in 2006. As a rule, Advisory Committees met at least three times during the year. The following Programme Advisory Committees met twice during 2005: Visual Arts, Business Management and Youth Work, while Te Ohu Kokiri met once.

See Appendix 2.

OBJECTIVE 12**PERFORMANCE**

At least 80% of graduates surveyed progress to employment or further education.

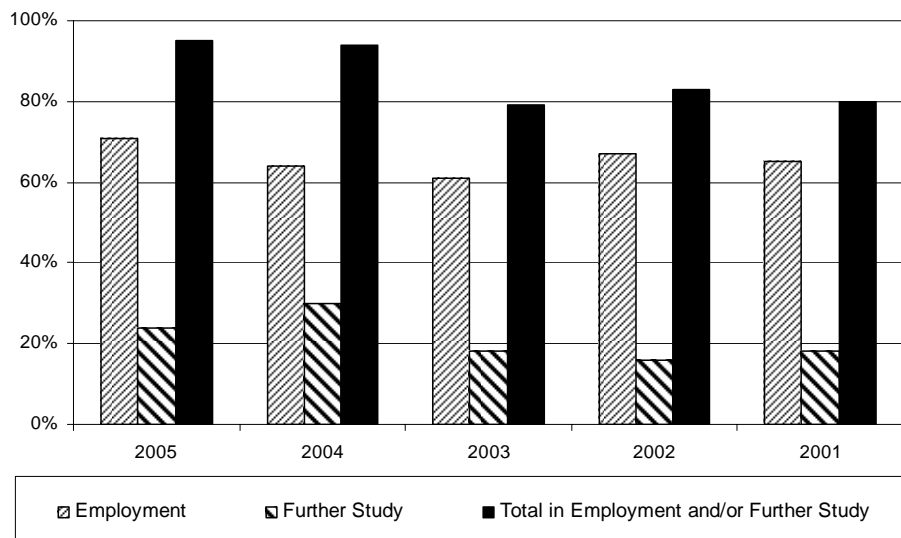
Performance Measure: Six months after graduation, at least 80% of graduates surveyed are either employed or continuing with further education

This objective was achieved. Of students who responded to the 2005 Graduate Survey, 95% were in employment or were studying. In 2005, Whitireia used the ITPNZ Graduate Survey questionnaire, with the result that information from the survey was a little different than in previous years.

Table 1: Level of Employment and Further Education of 2004 Graduates

	2005	2004	2003	2002	2001
Employment	71%	64%	61%	67%	61%
Further Education	24%	30%	18%	16%	19%
Total in Employment and/or Further Education	95%	94%	79%	83%	80%
<i>(Target 2005 - 80%)</i>					

Figure 1: Graduates Employed or Undertaking Further Study



OBJECTIVE 13

PERFORMANCE

At least 85% of employers surveyed are satisfied with graduate skills.

Performance Measure: At least 85% of employers surveyed each year are satisfied or very satisfied with the suitability of graduates

This objective was achieved. In October 2005, a survey sought employers' views regarding the suitability of Whitireia Community Polytechnic graduate skills. An employer satisfaction rating was used with response choices ranging from "very satisfied" to "very dissatisfied".

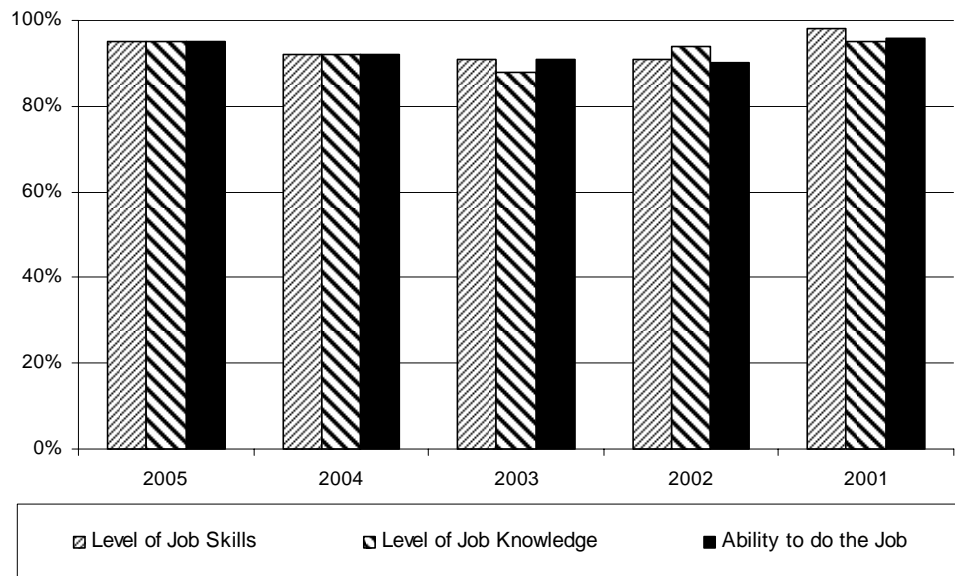
Employers' responses indicated a high level of satisfaction with Whitireia graduates' proficiency, with the target of 85% being met for all criteria.

Table 2: Employers' Satisfaction with Graduate Skills

	2005	2004	2003	2002	2001
Relevance of Qualification	93%	85%	91%	90%	98%
Level of Job Skills	95%	92%	91%	91%	98%
Level of Job Knowledge	95%	92%	88%	94%	95%
Ability to do the Job	95%	92%	91%	90%	96%
Attitude to the Job	92%	100%	93%	97%	96%
Work Ethics	94%	100%	93%	100%	90%
Work with Minimal Supervision	94%	92%	91%	87%	91%
Work Well as Team Member	94%	85%	91%	87%	90%

(Target 2005 - 85%)

Figure 2: Employers' Satisfied with Graduate Skills



OBJECTIVE 14

PERFORMANCE

The Polytechnic supports relevant research to support teaching and learning.

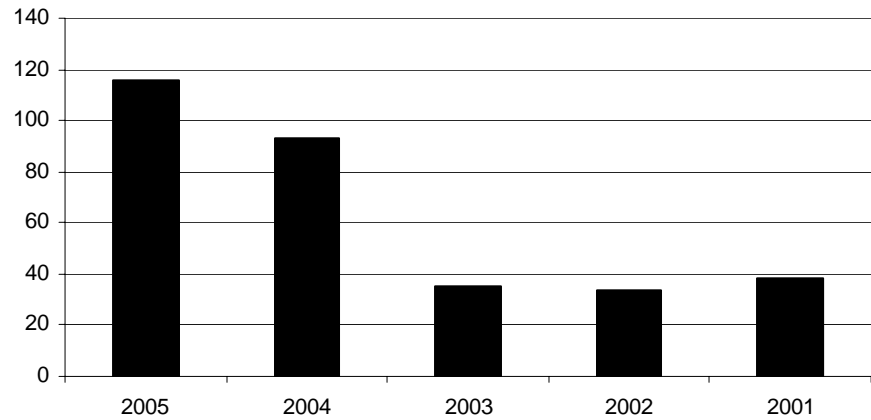
Performance Measure: At least 20 research outputs are produced each year to support teaching and learning

This objective was achieved. One hundred and sixteen staff research outputs were reported in 2005. This included completed research publications, reports, conference papers and creative installations. This figure of 116 research outputs represents a continuing increase in research, compared with 93 research outputs in 2004 and only 35 completed research projects in 2003.

Table 3: Summary of Research Initiatives in 2005

Creative installations	3
Completed research project reports	17
Publications	35
Conference Presentations	61
TOTAL	116

Figure 3: Research Outputs 2001-2005



GOAL 2

To focus on the success of every student through flexible learning delivery, technology supported learning and quality educational support services.

OBJECTIVE 15**PERFORMANCE**

At least 80% of students who enrol for a qualification complete their courses.

Performance Measure:

- 80% of domestic students enrolled for a qualification complete their courses
- 80% of international students enrolled for a qualification complete their courses

This objective was achieved: In 2005, a total of 84.4% of all students completed courses leading to a qualification according to official TEC figures. The TEC figures do not distinguish between international and domestic students, but internal statistics showed that international students were more likely to complete courses.

Table 4: Student Completion Rate

	Target	2005	2004	2003	2002	2001
Student Completion Rate	80%	84.4%	86.8%	88.7%	87.9%	81.9%

OBJECTIVE 16**PERFORMANCE**

At least 80% of students who complete courses leading to a qualification do so successfully.

Performance Measures:

- 65% or more of students, including international students, who **enrol** in courses leading to a qualification are successful
- 80% or more of students, including international students, who **complete** courses leading to a qualification are successful

These objectives were achieved.

- 72.7 % of students who enrolled in courses leading to a qualification were successful in 2005.
- 86.1% of students who completed courses leading to a qualification were successful in 2005.

Table 5: Student Success Rates

	Target	2005	2004	2003	2002	2001
Student success as % of enrolments	65%	72.7%	73.1%	70.3%	70.4%	72.3%

OBJECTIVE 17**PERFORMANCE**

At least 85% of students evaluate their overall learning experience positively.

Performance Measure: 85% or more of students surveyed are “satisfied” or “very satisfied” with the overall quality of their learning programmes

This objective was achieved: A total of 95% of students reported satisfaction with their overall learning experience in 2005.

The 2005 Student Satisfaction Survey was carried out across the polytechnic, and included more than 111 programmes. A total of 1,791 students responded. The student satisfaction survey form was simplified, and for the first time it was available online. A student satisfaction rating was used giving response choices ranging from “very satisfied” to “very dissatisfied”.

A total of 95% of surveyed students reported that they were “very satisfied” or “satisfied” with their overall learning experience. This exceeded the target of 85% for overall programme satisfaction.

Written comments from students were used to gain clarity and to direct possible corrective action. Where targets were not met for particular programmes, Faculty Deans were required to prepare an action plan for improving student satisfaction within the programme.

Table 6 shows that student satisfaction rates generally improved in 2005.

Table 6: Student Satisfaction with Programmes

Teaching programmes	Students Satisfied or Very Satisfied				
	2005	2004	2003	2002	2001
Well organised	88%	84%	82%	81%	82%
Useful content	98%	91%	90%	91%	92%
Standard of teaching	94%	86%	85%	87%	84%
Fair & relevant work for assessments	93%	87%	82%	82%	82%
Helpful feedback on work	95%	86%	85%	87%	87%
Overall Programme Satisfaction	95%	89%	87%	88%	88%
Overall Learning Experience	95%	89%	87%	88%	88%

(Target 2005 – 85%)

OBJECTIVE 18**PERFORMANCE**

At least 80% of students evaluate learning support services positively.

Performance Measure: At least 80% of students are “satisfied” or “very satisfied” with the Library, Customer Services, Learning Skills and Student Services

This objective was achieved in two areas. The Library’s satisfaction rate was 87% while Customer Services achieved an 81% satisfaction rate. Learning Skills and Student Support did not achieve the 80% target for polytechnic services. In general, student satisfaction with polytechnic services increased from 2004 to 2005.

In service areas where the satisfaction target was not met, managers were requested to provide explanations, and action plans were set in place to improve service levels.

Table 7: Student Satisfaction with Services

Learning Support Services	Students Satisfied or Very Satisfied				
	2005	2004	2003	2002	2001
Library	87%	78%	87%	90%	90%
Customer Services	81%	79%	87%	91%	92%
Learning Skills	77%	77%	80%	83%	88%
Student Services	79%	74%	74%	79%	80%

(Target 2005 - 80%)

OBJECTIVE 19**PERFORMANCE**

Relevant strategic developments are incorporated into Business Plans.

Performance Measure:

All Faculties include in their annual business plans at least one objective each year that furthers each of the following: flexible learning, internationalisation, programme development, and entrepreneurial activity

This target was largely achieved. All faculties included strategic development objectives in their business plans to improve flexible learning, programme development and entrepreneurial activity. Two faculties did not have objectives in internationalisation.

GOAL 3

To be recognised as a leading provider of tertiary education for multicultural communities and in achieving equity of educational and equal employment opportunities.

OBJECTIVE 20**PERFORMANCE**

The gender and ethnicity profiles of students reflect those profiles in our communities, or show greater participation by traditionally under-represented groups such as Māori and Pacific people.

Performance Measure: The gender and ethnicity profiles of students enrolled in courses reflect those profiles of our communities or show greater participation of Māori and Pacific people.

Targets (from 2001 Department of Statistics Census):

<i>Female</i>	<i>52%</i>
<i>Male</i>	<i>48%</i>
<i>Māori</i>	<i>16%</i>
<i>Pacific</i>	<i>15%</i>

The objective was partly achieved.

The objectives for Māori and Pacific student participation were achieved: In 2005, 19.8% of domestic students were Māori, compared with a target of 16%. 20.7% of domestic students were Pacific students, compared with a target of 15%.

The objectives for gender participation were not achieved: More women than men attended in 2005, e.g. 59.3% of students were female while 40.7% of students were male.

Table 8: Ethnicity Profile for 2005 Domestic Student Enrolments

Students	2005	
	Target	Actual
Female	52.0%	59.3%
Male	48.0%	40.7%
Māori	16.0%	19.8%
Pacific	15.0%	20.7%

OBJECTIVE 21**PERFORMANCE**

Completion rates for gender and ethnicity groupings of students will move towards matching the completion rates achieved for the total number of students.

Performance Measure: Course completion rates for gender and ethnicity groupings of students move towards matching the completion rates achieved for the total number of students

The objective was not fully achieved: The polytechnic's target of an 80% completion rate was achieved by both male and female students. However, it was not achieved by Māori and Pacific students, who had completion rates of 79.4% and 74.9% respectively. As official TEC completion figures do not distinguish by ethnicity or gender, we have used internal statistics in the following table.

Table 9: Gender and Ethnicity Profile for Student Completion Rates

	2005	2004	2003	2002	2001
Female	81.7%	87.4%	88.7%	87.7%	83.3%
Male	83.6%	84.6%	88.6%	88.1%	79.9%
Māori	79.4%	77.6%	85.2%	82.5%	73.1%
Pacific	74.9%	84.1%	86.5%	87.3%	77.2%

(Target 2005 - 80%)

OBJECTIVE 22**PERFORMANCE**

Success rates for gender and ethnicity groupings of students will move towards matching the success rates achieved for the total numbers of students.

Performance Measure: The actual success rates for gender and ethnicity groupings of students move towards matching the success rates achieved for the total number of students

This objective was not fully achieved. The polytechnic's target of a 65% success rate was achieved by both male and female students. However, it was not achieved by Māori and Pacific students, who had success rates of 58.0% and 57.9 % respectively. As official TEC completion figures do not distinguish by ethnicity or gender, we have used internal statistics in the following table.

Table 10: Gender and Ethnicity Profile for Student Success Rates

	2005	2004	2003	2002	2001
Female	72.2%	75.1%	73.5%	73.7%	75.6%
Male	67.1%	68.0%	65.5%	65.8%	67.7%
Māori	58.0%	55.5%	64.2%	63.1%	62.8%
Pacific	57.9%	65.9%	61.3%	56.9%	64.5%

(Target 2005 - 65%)

OBJECTIVE 23**PERFORMANCE**

Demonstrable progress is made towards achieving equal educational opportunities.

Performance Measure: The Equal Educational Opportunity annual plan is achieved

This objective was achieved. The Equal Educational Opportunities Committee met three times during 2005. An Equal Educational Opportunity annual plan was achieved. This is monitored and reported through Whitireia's Special Supplementary Grants reporting to the TEC. Equal Educational Opportunities initiatives were promoted throughout the polytechnic and staff reported on developments including research to promote equity in student learning opportunities.

See Appendix 3.

OBJECTIVE 24**PERFORMANCE**

The ethnicity profiles of staff move towards matching the profile of enrolled students.

Performance Measure: The gender and ethnicity profiles of staff employed by the Polytechnic reflect those profiles of our communities or show greater participation of Māori or Pacific people

Targets (from latest Department of Statistics Census):

<i>Female</i>	<i>52%</i>
<i>Male</i>	<i>48%</i>
<i>Māori</i>	<i>16%</i>
<i>Pacific</i>	<i>15%</i>

This objective was not achieved. The profile of polytechnic staff for the last five years is given in Table 11. Staff numbers continued to grow last year, but at a slower rate. The proportion of male staff decreased slightly, while female staff increased marginally. The percentage of staff who are Māori remained static, whereas Pacific staff decreased slightly.

Table 11: Gender and Ethnicity Staffing Rates

	2005 Target	2005	2004	2003 Staff	2002	2001
Total numbers		403	387	301	265	228
Female	52%	66%	65%	74%	76%	75%
Male	48%	34%	35%	26%	24%	25%
Māori	16%	13%	13%	13%	12%	16%
Pacific	15%	7%	8%	8%	8%	7%

OBJECTIVE 25

PERFORMANCE

Demonstrable progress is made towards achieving equal employment opportunities.

Performance Measure: Achievement of the objectives of the Equal Employment Opportunity annual plan

This objective was achieved. During 2005, the revised questions asked by interview panels were reviewed. It was found that the questions were generally considered to be an improvement on that previously used but refinement was still suggested.

In particular, whilst there was less potential for the questions to discriminate on the basis of gender, age and ethnicity some adjustments were suggested to ensure that candidates for appointment were afforded the best opportunity to put forward their relevant experience and skills for the position applied for.

The questions around the applicant's knowledge and experience of Treaty of Waitangi issues continue to be a challenge in terms of ensuring that the diverse responses are assessed in a manner which accommodates that diversity.

An examination of policy and procedures was carried out to ensure compliance with the Criminal Records (Clean Slate) Act 2004. This has an EEO element as it seeks to safeguard individuals from unintended consequences (e.g. discrimination in employment) that could result from historic, low level offending being revealed.

Current policy and procedures appear to have no adverse implications for prospective or current employees with respect to the Act.

GOAL 4

To enhance the long-term financial viability of the polytechnic through sound financial management, effective administrative systems and managed entrepreneurial activities.

OBJECTIVE 26**PERFORMANCE**

Council and Management have assurance that effective administrative systems are in place.

Performance Measure: An annual plan for internal/external reviews of activities/services is achieved

This objective was achieved. Each year a plan of internal/external audits of activities/services is set up and implemented.

In 2005, the following internal/external audits were undertaken and completed:

- Review of Security at Porirua Campus
- Strategic Review of Kapiti Campus
- Practice Academic Audit (*Whitireia Programmes and Services*)

OBJECTIVE 27**PERFORMANCE**

The polytechnic's funding base is diversified.

Performance Measure: At least 45% of funding comes from non-Ministry of Education sources each year

This objective was achieved. Funding received by the polytechnic from other sources than the Tertiary Education Commission was 48.6% (target 45%) of the total funding.

In 2005, the polytechnic achieved 4,459 EFTS, which was a 2.4% decrease over 2004 figures. Government-funded EFTS were 3,237.83 EFTS, which was an increase of 4.3% over 2004 figures.

Table 12: Actual Equivalent Full-time students (EFTS)

	2005	2004	2003	2002	2001
			Actual		
Arts & Humanities	1,723.51	1,652.83	1,633.59	1,076.24	1,051.62
Business & Law	811.70	704.38	667.77	602.14	560.02
Health Professions	406.23	381.75	191.50	188.50	209.86
Science & Applied Science	26.67	28.16	41.54	42.95	40.98
Teacher Education	86.25	112.02	87.50	77.21	79.66
Technology	17.28	32.95	31.80	12.10	2.93
Trades Training	166.19	192.06	170.66	183.56	131.18
Sub Total (TEC)	3,237.83	3,104.17	2,824.35	2,182.70	2,076.25
International	1,055.79	1,299.24	989.25	624.06	203.85
TEC Contracts	53.50	44.88	86.03	82.97	50.55
STAR	32.01	30.39	28.86	10.51	8.62
Other	80.04	90.71	94.26	148.04	142.55
Total	4,459.17	4,569.39	4,022.75	3,048.28	2,481.82

OBJECTIVE 28**PERFORMANCE**

Sound and prudential financial management is exercised.

Performance Measure: The following financial performance measures are achieved:

	2005	2004	2003
	Actual		
Revenue (millions)	\$42.0	\$44.0	\$38.8
Surplus (\$ in Millions)	\$0.4	\$6.5	\$6.2
Surplus (% Income)	1.0%	14.9%	15.9%
Return on Net Assets (%)	0.8%	13.7%	19.1%
Revenue from TEC (\$ of Total Revenue)	\$20.4	\$19.5	\$16.5
Revenue from TEC (% of Revenue)	48.7%	44.3%	42.7%
Cost per EFTS	\$9,324	\$8,193	\$8,112
Working Capital Ratio	1.33	1.61	1.10
Net Assets per EFTS	\$10,678	\$10,484	\$8,028
Net Operating Cash Flow (\$ in Millions)	\$2.5	\$9.3	\$8.7

Note: In performance indicators, student enrolment, completion and success rates were based on student enrolments in courses leading to qualifications. Ethnicity data was based on students' identification of their ethnicities on their enrolment forms.

EDUCATION PROGRAMMES PERFORMANCE

Summary of Whitireia Community Polytechnic performance for the 2005 Academic Year

(refer to Performance Measures Definitions)

ARTS AND COMMUNICATION	Approval Status	Student Satisfaction Rate % <i>Target 85%</i>	Course Completion Rate % <i>Target 80%</i>	Course Achievement Rate % <i>Target 80%</i>	Course Success Rate % <i>Target 65%</i>	Number of Graduates 2005
ARTS						
Dance						
Certificate in Performing Arts	1	100%	76.5%	80.8%	61.8%	10
Diploma in Performing Arts	1	100%	82.1%	91.3%	75.0%	5
Diploma in Performing Arts (Advanced)	1	88%	100.0%	93.3%	93.3%	8
Design and Multimedia						
Certificate in Desktop Publishing for Print and the Web	1	100%	90.9%	91.4%	83.1%	15
Certificate in Digital Design	1	86%	85.0%	100.0%	85.0%	8
Certificate in Digital Media	1	100%	92.7%	54.8%	50.7%	5
Diploma in Digital Design and Multimedia	1	50%	100.0%	85.1%	85.1%	8
Drama						
Diploma in Stage and Screen Arts	1	96%	96.4%	97.2%	93.8%	11
Diploma in Applied Stage and Screen Arts (Advanced)	1	100%	100.0%	100.0%	100.0%	4
Music						
Certificate in DJ Music	1	-	86.0%	53.1%	45.6%	6
Certificate in Foundation Music	1	90%	89.7%	61.4%	55.1%	10
Certificate in Rock, Jazz and Commercial Music	1	94%	95.5%	65.3%	62.3%	11
Diploma in Rock, Jazz and Commercial Music	1	88%	87.3%	82.8%	72.3%	10
Photography						
Certificate in Practical Photography	1	100%	100%	81.8%	81.8%	17
Certificate in Advanced Photography	1	100%	95.2%	93.2%	88.7%	5
Visual Arts						
Certificate in Visual Arts	1	100%	88.1%	86.5%	76.2%	12
Diploma in Jewellery Design	1	100%	100.0%	100.0%	100.0%	10
Diploma in Visual Arts	1	90%	90.5%	89.5%	81.1%	11
Diploma in Visual Arts (Advanced)	1	67%	69.2%	100.0%	69.2%	4
COMMUNICATION AND MEDIA STUDIES						
Creative Writing						
Diploma in Creative Writing	1	91.5%	97.5%	78.2%	76.3%	10
Diploma in Creative Writing (Applied Project)	1	100%	90.0%	94.4%	85.0%	6

	Approval Status	Student Satisfaction Rate %	Course Completion Rate %	Course Achievement Rate %	Course Success Rate %	Number of Graduates 2005
Creative Writing (continued)						
Diploma in Creative Writing (Advanced Body of Work)	1	100%	100.0%	92.9%	92.9%	8
English Language						
Certificate in English for Further Studies	1	96.0%	79.2%	75.6%	59.8%	36
Certificate in Intensive English for IELTS	1	95.0%	94.9%	100.0%	94.9%	-
Journalism						
National Certificate in Journalism	2	100.0%	50.0%	94.1%	47.1%	11
National Diploma in Journalism	2	<i>Included above</i>	96.4%	81.5%	78.6%	8
Publishing						
Diploma in Publishing	2	87.5%	89.4%	96.8%	86.5%	14
BUSINESS AND INFORMATION TECHNOLOGY						
BUSINESS AND MANAGEMENT						
Business Management						
Certificate in Public Sector Knowledge	1	100.0%	8.1%	100.0%	8.1%	18
NZIM Certificate in Management	2	89.5%	82.0%	90.7%	74.3%	33
New Zealand Diploma in Business	2	97.6%	89.6%	86.5%	77.5%	210
Bachelor of Applied Business Studies	1	93.0%	93.9%	97.8%	91.9%	19
COMPUTING AND INFORMATION TECHNOLOGY						
Computing and Information Technology						
Certificate in Computing (Introductory)	1	100.0%	62.7%	64.0%	40.1%	19
Certificate in Computing	1	100.0%	73.6%	84.1%	61.9%	46
National Diploma in Computing (Support)	2	83.0%	70.5%	87.3%	61.6%	13
Diploma in Information & Communications Technology (<i>Lvl 5 & 6</i>)	1	87.2%	84.5%	85.0%	71.8%	124
Bachelor of Information Technology	1	100.0%	92.8%	82.7%	76.7%	19
HEALTH, EDUCATION AND SOCIAL SCIENCES						
NURSING AND HEALTH SCIENCES						
Foundation						
Certificates in New Directions and Work Skills	1	100.0%	100.0%	100.0%	100.0%	9
Certificate in Foundation Education (<i>with strands in Business, Health Science and Social Sciences</i>)	1	81.3%	74.1%	71.7%	53.1%	57

	Approval Status	Student Satisfaction Rate % <i>Target 85%</i>	Course Completion Rate % <i>Target 80%</i>	Course Achievement Rate % <i>Target 80%</i>	Course Success Rate % <i>Target 65%</i>	Number of Graduates 2005
Foundation (continued)						
Short Course Certificate – Introduction to Clinical Supervision	1	-	54.6%	100.0%	54.6%	-
Short Course Certificate in Clinical Supervision (Advanced)	1	-	100.0%	100.0%	100.0%	-
Nursing						
Bachelor of Nursing (<i>including RN/BN</i>)	3	95.7%	94.4%	95.4%	90.0%	44
Bachelor of Nursing (Pacific)	3	91.5%	83.5%	92.0%	76.9%	-
Postgraduate Certificate Forensic Psychiatric Care	3	100.0%	95.4%	99.0%	94.4%	0
Post Graduate Certificate in Hospice Palliative Care	3	100.0%	88.4%	99.4%	87.9%	37
Postgraduate Certificate in Perioperative Specialty Nursing	3	-	75.0%	100.0%	75.0%	-
Post Graduate Certificate in Primary Health Care Specialty Nursing	3	100.0%	90.3%	94.9%	85.7%	47
National Certificate in Tamariki Ora - Well Child Services	2	-	89.5%	100.0%	89.5%	-
Postgraduate Certificate in Psychiatric Nursing (Mental Health)	3	97.0%	87.2%	97.3%	84.9%	-
Graduate Diploma in Psychiatric Practice	3	100.0%	100.0%	100.0%	100.0%	-
Paramedic						
Bachelor of Health Science (Paramedic)	1	93.3%	91.9%	100.0%	91.9%	-
SOCIAL AND COMMUNITY SERVICES						
Community Services						
Certificate in Community Services	1	-	97.5%	96.1%	93.7%	6
Certificate in Pacific Community Health and Social Services	1	100.0%	36.4%	100.0%	36.4%	2
National Certificate In Mental Health (Mental Health Support Work) (Level 4)	2	94.5%	81.6%	79.5%	64.9%	30
Social Work						
National Diploma in Social Work (Level 6)	2	66.5%		<i>Included below</i>		32
Bachelor of Social Work	1	90.0%	85.5%	100.0%	85.5%	14
Youth Work						
Certificate in Youth Work (Christian Youth Workers)	1	100.0%	87.6%	86.4%	75.7%	27
Diploma in Youth and Community Studies	1	-	46.9%	100.0%	46.9%	5
TEACHING AND EDUCATION						
Early Childhood Education						
New Zealand National Nanny Certificate	1	100.0%	90.0%	100.0%	90.0%	9
Certificate in Early Childhood Bridging	1	100.0%	53.0%	100.0%	53.0%	5

	Approval Status	Student Satisfaction Rate % <i>Target 85%</i>	Course Completion Rate % <i>Target 80%</i>	Course Achievement Rate % <i>Target 80%</i>	Course Success Rate % <i>Target 65%</i>	Number of Graduates 2005
Early Childhood Education (continued)						
Certificate in Early Childhood Education (Introductory)	2	100.0%	45.4%	100.0%	45.4%	9
Diploma of Teaching (Early Childhood Education)	3	93.4%	80.4%	97.8%	78.6%	23
Adult Teacher Education						
Certificate in Adult Learning and Teaching	1	-	65.9%	100.0%	65.9%	-
Diploma in Adult Learning and Teaching	1	-	87.5%	100.0%	87.5%	-
SERVICE INDUSTRIES AND TRADES						
BUSINESS AND MANAGEMENT						
Business Administration						
Short Course Certificate in Computer Applications	1	-	41.9%	100.0%	41.9%	69
Short Course Certificate in MYOB (Accounts)	1	-	100.0%	67.4%	67.4%	9
Certificate in Office Skills/Computing	1	91.0%	96.6%	51.4%	49.7%	9
Certificate in Administration	1	100.0%	100.0%	54.6%	54.6%	5
Certificate in Call Centre Operations	1	100.0%	99.5%	79.6%	79.2%	24
Certificate in Retail Management	1	100.0%	46.3%	52.6%	24.4%	-
Certificate in Business Administration/Computer Applications	1	100.0%	97.0%	81.3%	78.8%	20
Certificate in Business Administration - Executive Secretarial	1	93.0%	98.5%	66.5%	65.5%	22
National Certificate in Business Administration and Computing (Level 2)	2	100.0%	91.7%	79.9%	73.3%	117
National Certificate in Computing (Level 2)	2	<i>Included above</i>	100.0%	100.0%	100.0%	-
National Certificate in First Line Management	2	-	93.2%	93.4%	89.8%	48
CATERING AND HOSPITALITY						
Cookery and Catering						
Certificate in Professional Cookery (<i>incorporating the City and Guilds Certificate and Diploma in Cookery</i>)	3	100.0%	85.1%	83.0%	70.6%	21
Food and Beverage Service						
Certificate in Café Service	1	-	63.5%	90.2%	57.3%	12
Hospitality Management						
Certificate in Hospitality Management	1	-	93.8%	100.0%	93.8%	8
Bridging Course for National Diploma in Hospitality Management	1	-	90.0%	100.0%	90.0%	-
National Diploma in Hospitality Management	2	-	100.0%	96.0%	96.0%	12

	Approval Status	Student Satisfaction Rate % <i>Target 85%</i>	Course Completion Rate % <i>Target 80%</i>	Course Achievement Rate % <i>Target 80%</i>	Course Success Rate % <i>Target 65%</i>	Number of Graduates 2005
SERVICE SECTOR						
Beauty and Hairdressing						
Certificate in Beauty and Hairdressing	1	100.0%	72.9%	98.6%	71.9%	10
Certificate in Beauty Therapy	1	100.0%	85.1%	75.0%	63.8%	7
National Certificate in Hairdressing (Salon Support)	2	100.0%	86.0%	80.4%	69.2%	10
Floristry						
Certificate in Floristry	1	100.0%	100.0%	95.8%	95.8%	22
Growsafe ® Introductory Certificate	1	-	100.0%	100.0%	100.0%	-
SPORTS AND RECREATION						
Outdoor Adventure						
Short Course Certificate in Avalanche Safety	1	-	100.0%	100.0%	100.0%	-
Certificate in Outdoor Adventure	1	100.0%	100.0%	71.4%	71.4%	3
Diploma in Outdoor Adventure	1	100.0%	100.0%	73.3%	73.3%	3
Diploma in Outdoor Leadership (Mountain Safety)	1	-	100.0%	88.3%	88.3%	51
TRADES AND TRANSPORT						
Trades						
Certificate in Trade Skills	1	-	100.0%	38.7%	38.7%	6
Certificate in Carpentry	1	92.0%	93.1%	43.0%	40.0%	7
Certificate in Plumbing, Drainlaying, Gasfitting and Roofing	1	100.0%	100.0%	100.0%	100.0%	7
Certificate in Electrical Engineering	1	93.0%	95.3%	60.1%	57.3%	5
Certificate in Automotive Engineering	1	80.0%	99.7%	50.3%	50.2%	11
Certificate in Automotive Engineering (Advanced)	1	100.0%	90.6%	80.9%	73.2%	10
National Certificate in Motor Industry Entry to Automotive Trades	2	-	100.0%	100.0%	100.0%	6
Transport						
Certificate in Commercial Road Transport	1	100.0%	94.9%	91.9%	87.2%	16
Certificate in Aviation (Helicopter)	3	100.0%	75.0%	70.4%	52.8%	-
Certificate in Aviation (Helicopter) Turbine	3	100.0%	100.0%	100.0%	100.0%	-
Certificate in Aviation (Helicopter) (Advanced)	3	100.0%	100.0%	100.0%	100.0%	-
Diploma in Aviation	3	100.0%	68.1%	97.9%	66.7%	3
TRAVEL AND TOURISM						
Tourism						
Certificate in Tourism	1	100.0%	86.7%	70.8%	61.3%	9
Certificate in Outdoor Cultural Tourism	1	100.0%	0.0%	0.0%	0.0%	-

	Approval Status	Student Satisfaction Rate % <i>Target 85%</i>	Course Completion Rate % <i>Target 80%</i>	Course Achievement Rate % <i>Target 80%</i>	Course Success Rate % <i>Target 65%</i>	Number of Graduates 2005
Tourism (continued)						
Diploma in International Tourism <i>(incorporating the City and Guilds Diploma in International Tourism)</i>	3	100.0%	100.0%	71.4%	71.4%	5
Travel						
Certificate in Travel	1	100.0%	99.0%	66.9%	66.3%	15
Certificate in Travel (Advanced)	1	-	100.0%	100.0%	100.0%	-
TE WĀNANGA MĀORI						
MĀORI STUDIES						
Māori Business and Development						
Diploma in Māori Land Court Law – He Kohikohinga a Te Iwi Māori	1	89.0%	89.4%	62.4%	55.8%	5
National Certificate in Māori Business Management: Paerangatiratanga	2	50.0%	91.8%	19.1%	17.5%	-
National Certificate in Employment Skills: Kia Tū Maia	1	100.0%	6.3%	100.0%	6.3%	2
Māori Arts						
National Certificate in Whakairo (Level 4): Tuturu	2	100.0%	100.0%	66.7%	66.7%	4
National Diploma in Whakairo (Level 5)	2	100.0%	100.0%	100.0%	100.0%	5
National Diploma in Whakairo (Level 6)	2	100.0%	100.0%	100.0%	100.0%	8
Te Reo Māori						
National Certificate in Te Reo Māori (Level 4): Te Ara Piko	2	100.0%	98.0%	16.8%	16.4%	5
Diploma in Te Reo Māori (Level 5): Te Ara Rarau	2	100.0%	71.4%	60.0%	42.9%	3

PERFORMANCE MEASURES DEFINITIONS

Performance measures that the Council considers will enable the preparation of a Statement of Service Performance for the purposes of Section 41.2 (e) of the Public Finance Act are listed below.

Students enrolled expressed as EFTS for the Polytechnic.

Completion Rate

$$\text{Completion rate \%} = \frac{\text{number of students who complete course}}{\text{number of students who enrolled in that course}} \times 100$$

Achievement Rate

$$\text{Achievement rate \%} = \frac{\text{number of students who meet course requirements}}{\text{number of students who completed course}} \times 100$$

Success Rate

$$\text{Success rate \%} = \frac{\text{number of students who meet course requirements}}{\text{number of students who enrolled in that course}} \times 100$$

("Success" is as defined in the programme approved by the Academic Board and as indicated in information provided for students.)

Student Satisfaction Rating

$$\text{Satisfaction rating \%} = \frac{\text{number of responses of satisfactory or better}}{\text{total number of responses}} \times 100$$

Approval Status

A code number indicates the qualification status of each programme at the time of compilation of this Statement of Service Performance.

1. These are programmes developed and approved by Whitireia Community Polytechnic, which the Institutes of Technology and Polytechnics Quality (ITPQ) and/or the New Zealand Qualifications Authority (NZQA) has approved and Whitireia Community Polytechnic is accredited to teach.
2. These are national qualifications, which the New Zealand Qualifications Authority has approved and Whitireia Community Polytechnic is accredited to teach.
3. These programmes are approved and accredited by the New Zealand Qualifications Authority and/or the Institutes of Technology and Polytechnics Quality (ITPQ), as well as meeting the requirements of another external body e.g. Teachers Council, Nursing Council.
4. These programmes are approved by the Whitireia Community Polytechnic Academic Board and/or meet the requirements of an external organisation e.g. Tertiary Education Commission.

Timelines measure percentage of programmes completed by dates specified to students in pre-programme information.

Location - Programmes will run at Porirua (P), Kapiti (K), Wellington (W), Auckland (A), Mohuia Crescent (M), Prosser Street (P), Tonga (T), Online (O) and Offsite (S).

Quantity Measures are EFTS Target as indicated for the Polytechnic.

Quality Measures are completion rates, achievement rates, success rates, student satisfaction rates and approval status.

STATEMENT OF ACCOUNTING POLICIES

for the year ended 31 December 2005

The Reporting Entity

Whitireia Community Polytechnic was established as a tertiary education provider under the Education Act 1989.

The group consists of Whitireia Community Polytechnic and Whitireia Foundation.

The Whitireia Foundation was established to disperse monies for charitable purposes including general education purposes and particularly activities of Whitireia Community Polytechnic for the betterment of it, its students, staff and the community it serves and is included in the group as Whitireia Foundation is regarded as a controlled entity.

These financial statements have been prepared in accordance with the Public Finance Act 1989 and Section 203 of the Education Act 1989, which includes the requirement to comply with generally accepted accounting practice.

Measurement Base

The financial statements have been prepared on a historical cost basis, modified by the revaluation of certain Property, Plant and Equipment.

Accounting Policies

The following accounting policies that materially affect the measurement of results and financial position have been applied:

Basis of Consolidation

The consolidated financial statements include Whitireia Community Polytechnic and Whitireia Foundation. The consolidated financial statements have been prepared by aggregating like items of assets, liabilities, revenues, expenses and cash flows on a line-by-line basis. All significant inter-entity transactions are eliminated on consolidation.

Budget Figures

The budget figures are those approved by the Council at the beginning of the financial year.

The budget figures have been prepared in accordance with generally accepted accounting practice and are consistent with the accounting policies adopted by the Council for the preparation of the financial statements.

Revenues

Government grants are recognised as income on a course percentage of completion basis.

Donations to Whitireia Community Polytechnic are recognised as income when the donation or asset is received, recorded at fair value.

Accounts Receivable

Accounts Receivable is stated at the estimated realisable value after providing for doubtful and uncollectable debts.

Investments

Investments are stated at the lower of cost or net realisable value.

Any decreases in value are recognised in the Statement of Financial Performance.

Inventories

Inventories available for resale are valued at the lower of cost (determined on a first-in first-out basis) and net realisable value. This valuation includes allowances for slow moving and obsolete inventories. All consumables are charged direct to expenditure.

Employee Entitlements

Provision is made in respect of Whitireia Community Polytechnic's liability for annual leave, tutorial discretionary leave and long service leave. Wages and salaries, annual leave and other entitlements that are expected to be settled within 12 months of reporting date are measured at nominal values on an entitlement basis at current rate of pay.

Entitlements that are payable beyond 12 months, such as long service leave, have been calculated on an actuarial basis. The calculations are based on:

likely future entitlements accruing to staff, based on years of service, years to entitlement, the likelihood that staff will reach the point of entitlement and contractual entitlements information, and

the present value of the estimated future cash flows. A discount rate of 7.5% and an inflation factor of 3% were used. The discount rate is based on the weighted average of Government interest rates for stock with terms to maturity similar to those of the relevant liabilities. The inflation factor is based on the expected long-term increase in remuneration for employees.

Property, Plant and Equipment

Land and Buildings are recorded at a fair value. The valuation was carried out by Adrian J Brady FNZIV, FNZPI, MBA of Telfer Young (Wellington) Ltd in December 2004. In accordance with FRS3 depreciated replacement cost has been used to value those buildings for which a fair value cannot be determined using market based evidence but market based evidence has been used to determine the value of both the Manchester Street and Mohuia Crescent properties.

Whitireia Community Polytechnic has adopted a three year revaluation cycle in accordance with FRS 3.

Crown owned Land and Buildings that Whitireia Community Polytechnic has a right to occupy are included as part of Whitireia Community Polytechnic's Property, Plant and Equipment. Although legal title has not been transferred, Whitireia Community Polytechnic has assumed all the normal risks and rewards of ownership.

Teaching Equipment, Library Collections and other Property, Plant and Equipment are recorded at original cost less depreciation.

Depreciation is provided on a straight line basis on all Property, Plant and Equipment other than land, Art Works and Landscaping at rates which will write off the cost (or valuation) of the assets to their estimated residual values over their useful life. The useful lives and associated depreciation rates of major classes of assets have been estimated as follows:

Asset Category	Life	Rate
Land	N/A	N/A
Buildings	30 and 50 years	3.3% and 2%
Building Services	20 years	5%
Building Fitout	10 years	10%
Plant and Machinery	10 years	10%
Furniture and Fittings	10 years	10%
Motor Vehicles	5 years	20%
Computer Equipment	4 years	25%
Communications	5 years	20%
Office Equipment	10 years	10%
Teaching Equipment	5 years	20%
Library Collections	8 years	12½%
Minor Equipment	8 years	12½%
Roads	50 years	2%
Leasehold Improvements	3 years	33.30%
Signs	4 years	25%

Course Development Costs

Course Development costs are expensed in the year the liability is incurred.

Goods and Services Tax (GST)

The Financial Statements are prepared on a GST exclusive basis, with the exception of Accounts Receivable and Accounts Payable, which are stated GST inclusive. When GST is not recoverable as input tax then it is recognised as part of the related asset or expense.

Income Tax

Tertiary institutions are exempt from the payment of income tax as they are treated by IRD as charitable organisations. Accordingly, no provision for income tax has been made.

Leases

Operating Leases

Leases where the lessor effectively retains substantially all the risks and benefits of ownership of the leased items are classified as operating leases. Payments under these leases are charged as expenses in the periods in which they are incurred.

Statement of Cash Flows

Cash means cash balances on hand, held in bank accounts, demand deposits and other highly liquid investments in which Whitireia Community Polytechnic invests as part of its day-to-day cash management.

Operating activities include cash received from all income sources of the group and record the cash payments made for the supply of goods and services. Agency transactions are recognised as receipts and payments in the Statement of Cash Flows given that they flow through Whitireia Community Polytechnic's main bank account.

Investing activities are those activities relating to the acquisition and disposal of non-current assets.

Financing activities comprise activities that change the equity and debt capital structure of Whitireia Community Polytechnic.

Financial Instruments

Whitireia Community Polytechnic is party to financial instruments as part of its normal operations. These financial instruments include bank accounts, investments, debtors, creditors and loans. All financial instruments are recognised in the Statement of Financial Position and all revenues and expenses in relation to financial instruments are recognised in the Statement of Financial Performance.

All financial instruments are shown at their fair value.

Changes in Accounting Policy

There were no changes from the accounting policies adopted in the last audited financial statements. All policies have been applied on a basis consistent with the previous period.

STATEMENT OF FINANCIAL PERFORMANCE

for the year ended 31 December 2005

	Notes	Parent			Consolidated	
		Actual	Budget	Actual	Actual	Actual
		2005	2005	2004	2005	2004
		\$	\$	\$	\$	\$
Government Grants	1	20,425,698	19,685,177	19,464,743	20,425,698	19,464,743
Student Tuition Fees		6,584,394	7,680,424	7,532,990	6,584,394	7,532,990
Other Fees and Charges	2	13,186,798	14,564,649	14,994,675	13,186,798	14,994,675
Interest Income		745,120	590,000	909,844	765,010	926,145
Polyshop		326,992	315,000	362,048	326,992	362,048
Sundry Income	3	713,754	597,698	718,956	785,810	732,603
Total Operating Revenue		41,982,756	43,432,948	43,983,256	42,074,702	44,013,204
Cost of Services		41,268,746	43,071,467	37,104,806	41,297,256	37,123,637
Polyshop		309,948	292,794	330,304	309,948	330,304
Total Cost of Operations		41,578,694	43,364,261	37,435,110	41,607,204	37,453,941
Net Surplus for the Period	4	404,062	68,687	6,548,146	467,498	6,559,263

Net Surplus is 1.0% Operating Revenue

STATEMENT OF MOVEMENTS IN EQUITY

as at 31 December 2005

	Parent			Consolidated	
	Actual	Budget	Actual	Actual	Actual
	2005	2005	2004	2005	2004
	\$	\$	\$	\$	\$
Net Surplus for the period	404,062	68,687	6,548,146	467,498	6,559,263
Revaluation Adjustment to Property, Plant and Equipment	(692,470)	0	9,061,004	(692,470)	9,061,004
Total Recognised Revenues and Expenses for the Period	(288,408)	68,687	15,609,150	(224,972)	15,620,267
Public Equity as at 1 January	47,904,953	47,904,953	32,295,803	48,076,639	32,456,372
Public Equity as at 31 December	47,616,545	47,973,640	47,904,953	47,851,667	48,076,639

STATEMENT OF FINANCIAL POSITION

as at 31 December 2005

	Notes	Parent			Consolidated	
		Actual	Budget	Actual	Actual	Actual
		2005	2005	2004	2005	2004
		\$	\$	\$	\$	\$
Public Equity						
General Equity	5	38,869,507	38,534,132	38,465,445	39,104,629	38,637,131
Asset Revaluation Reserve	6	8,747,038	9,439,508	9,439,508	8,747,038	9,439,508
Total Public Equity		47,616,545	47,973,640	47,904,953	47,851,667	48,076,639
Current Assets						
Cash and Bank		717,115	330,111	1,694,780	751,823	1,721,321
Accounts Receivable	7	1,267,064	1,025,000	955,058	1,273,239	955,925
Prepayments		600,386	125,000	429,980	600,386	429,980
Short Term Investments	8	5,000,000	4,250,000	9,000,000	5,319,000	9,269,000
Inventories	9	69,585	80,000	81,646	69,585	81,646
Total Current Assets		7,654,150	5,810,111	12,161,464	8,014,033	12,457,872
Less Current Liabilities						
Fees in Advance		2,193,164	1,500,000	2,126,066	2,193,164	2,126,066
Accounts Payable	10	2,268,584	2,255,000	4,241,822	2,270,648	4,243,848
Provision for Employee Entitlements	11	1,224,282	885,000	917,487	1,224,282	917,487
Special Accounts	12	86,355	125,000	82,165	209,052	204,861
Total Current Liabilities		5,772,385	4,765,000	7,367,540	5,897,146	7,492,262
Working Capital		1,881,765	1,045,111	4,793,924	2,116,887	4,965,610
Non-Current Assets						
Property, Plant and Equipment	13	45,761,137	46,953,527	43,128,811	45,761,137	43,128,811
Shares		10,002	10,002	10,002	10,002	10,002
Total Non-Current Assets		45,771,139	46,963,529	43,138,813	45,771,139	43,138,813
Non-Current Liabilities						
Provision for Employee Entitlements	11	36,359	35,000	27,784	36,359	27,784
Total Non-Current Liabilities		36,359	35,000	27,784	36,359	27,784
Net Assets		47,616,545	47,973,640	47,904,953	47,851,667	48,076,639

STATEMENT OF CASH FLOWS

for the year ended 31 December 2005

	Parent			Consolidated	
	Actual	Budget	Actual	Actual	Actual
	2005	2005	2004	2005	2004
	\$	\$	\$	\$	\$
Cash Flows from Operating Activities					
Cash was provided from:					
Government Grants	19,270,559	19,163,355	20,515,404	19,270,559	20,515,404
Tuition Fees	17,630,342	18,891,343	20,586,262	17,630,342	20,586,262
Revenues from Services Provided	3,632,825	3,588,464	1,835,663	3,701,826	1,849,311
Interest Received	819,759	662,525	842,809	837,340	858,243
GST	259,485	0	0	259,485	0
	41,612,970	42,305,687	43,780,138	41,699,552	43,809,220
Cash was applied to:					
Payments to Employees	20,282,648	20,099,403	18,134,775	20,282,648	18,134,775
Payments to Suppliers	18,806,888	20,210,395	16,150,792	18,835,303	16,167,598
GST	0	20,000	159,415	0	159,415
	39,089,536	40,329,798	34,444,982	39,117,951	34,461,788
Net Cash Flows from Operating Activities	2,523,434	1,975,889	9,335,156	2,581,601	9,347,432
Cash Flows from Investing Activities					
Cash was applied to:					
Purchase of Property, Plant and Equipment	7,501,099	8,090,558	11,741,533	7,501,099	11,741,533
	7,501,099	8,090,558	11,741,533	7,501,099	11,741,533
Net Cash Flows from Investing Activities	(7,501,099)	(8,090,558)	(11,741,533)	(7,501,099)	(11,741,533)
Net increase (decrease) in cash held	(4,977,665)	(6,114,669)	(2,406,377)	(4,919,498)	(2,394,101)
Plus Opening Cash	10,694,780	10,694,780	13,101,157	10,990,321	13,384,422
Closing Cash Balance	5,717,115	4,580,111	10,694,780	6,070,823	10,990,321
Cash and Bank	717,115	330,111	1,694,780	751,823	1,721,321
Short Term Investments	5,000,000	4,250,000	9,000,000	5,319,000	9,269,000
Closing Cash Balance	5,717,115	4,580,111	10,694,780	6,070,823	10,990,321

RECONCILIATION OF THE NET SURPLUS ON OPERATIONS WITH THE NET CASH FLOWS FROM OPERATING ACTIVITIES

	Parent		Consolidated	
	2005	2004	2005	2004
	\$	\$	\$	\$
Net Surplus for the period	404,062	6,548,146	467,498	6,559,263
Add (Less) Non Cash Items:				
Depreciation	3,669,302	2,404,589	3,669,302	2,404,589
Revaluation Loss	0	64,000	0	64,000
Loss (Gain) on Sale of Property, Plant and Equipment	30,131	13,662	30,131	13,662
Add (Less) Movements in Working Capital Items:				
(Increase) Decrease in Receivables	(281,876)	34,324	(287,184)	33,458
(Increase) Decrease in Prepayments	(170,406)	(288,828)	(170,406)	(288,828)
(Increase) Decrease in Inventory	12,060	1,279	12,060	1,279
(Decrease) Increase in Payables	(1,885,363)	1,531,337	(1,885,324)	1,533,363
(Decrease) Increase in Employee Entitlements	315,370	256,910	315,370	256,910
(Decrease) Increase in Fees in Advance	67,099	(920,112)	67,099	(920,113)
(Decrease) Increase in GST	358,865	(159,415)	358,865	(159,415)
(Decrease) Increase in Special Accounts	4,190	(150,736)	4,190	(150,736)
Net Cash Flow from Operating Activities	2,523,434	9,335,156	2,581,601	9,347,432

STATEMENT OF COMMITMENTS

as at 31 December 2005

	Parent		Consolidated	
	2005	2004	2005	2004
	\$	\$	\$	\$
Capital Commitments Approved and Contracted				
Not later than one year	151,068	3,625,475	151,068	3,625,475
Other Non-Cancelable Operating Leases				
Not later than one year	1,263,365	1,418,716	1,263,365	1,418,716
1 to 2 years	1,119,671	1,207,770	1,119,671	1,207,770
2 to 5 years	36,424	1,144,805	36,424	1,144,805
Other Non-Cancelable Contracts				
Not later than one year	400,133	571,850	400,133	571,850
1 to 2 years	65,772	240,000	65,772	240,000
Total Commitments	3,036,433	8,208,616	3,036,433	8,208,616

STATEMENT OF CONTINGENT LIABILITIES

as at 31 December 2005

There are no known contingent liabilities at this date. (2004: Nil)

NOTES TO AND FORMING PART OF THE FINANCIAL STATEMENTS

as at 31 December 2005

1 Government Grants

This includes monies received from Government by way of an Operational Bulk Grant, which is based on equivalent full-time student (EFTS) levels and the funding category levels of these EFTS, and specific purpose related grants.

2 Other Fees and Charges

	Parent		Consolidated	
	2005	2004	2005	2004
	\$	\$	\$	\$
International Students	10,361,962	12,450,852	10,361,962	12,450,852
Education Service Contracts	2,350,486	1,789,165	2,350,486	1,789,165
The Learning Shop	143,331	203,925	143,331	203,925
Special Fees	14,334	274,070	14,334	274,070
Child Care	269,503	237,385	269,503	237,385
Secondary Tertiary Alignment of Resources	47,182	39,278	47,182	39,278
Total Other Fees and Charges	13,186,798	14,994,675	13,186,798	14,994,675

3 Sundry Income

The significant items within this revenue item are:

	Parent		Consolidated	
	2005	2004	2005	2004
	\$	\$	\$	\$
Rent	75,532	81,295	75,532	81,295
Student Health Service	47,970	51,900	47,970	51,900
Administration Fees	25,630	30,740	25,630	30,740
Homestay Admin Fees	134,538	120,117	134,538	120,117

4 Statement of Financial Performance

The net surplus is after providing for:

	Parent		Consolidated	
	2005	2004	2005	2004
	\$	\$	\$	\$
Fees paid to external auditors	53,000	50,500	55,064	52,775
Councillors Fees	45,050	39,330	45,050	39,330
Bad Debts written off	23,502	76,870	23,502	76,870
Change in provision for doubtful debts	-30,129	-160,685	-30,129	-160,685
Loss on Disposal of Assets	30,131	13,662	30,131	13,662
Depreciation:				
- Buildings *	331,480	469,853	331,480	469,853
- Teaching Equipment	198,602	168,551	198,602	168,551
- Computers	1,335,570	1,193,803	1,335,570	1,193,803
- Furniture & Fittings	115,249	120,402	115,249	120,402
- Office Equipment	28,986	25,964	28,986	25,964
- Library	161,187	154,235	161,187	154,235
- Motor Vehicles	43,417	28,598	43,417	28,598
- Plant & Machinery	36,205	38,430	36,205	38,430
- Roads	13,460	11,290	13,460	11,290
- Leasehold Improvements	243,425	106,879	243,425	106,879
- Minor Equipment	58,552	64,610	58,552	64,610
- Communications	11,508	14,353	11,508	14,353
- Signs	13,279	7,621	13,279	7,621
- Building Services *	272,685	0	272,685	0
- Building Fitout *	805,697	0	805,697	0
Total Depreciation	3,669,302	2,404,589	3,669,302	2,404,589

* Consequent to a general revaluation in compliance with FRS 3, new categories of assets (Building Services and Building Fitout) were created and depreciated from 01/01/2005.

5 General Equity

a Retained Earnings

	Parent		Consolidated	
	2005	2004	2005	2004
	\$	\$	\$	\$
Balance 1 January	38,465,445	21,670,257	38,637,131	21,830,826
Crown Asset Reserve transferred	0	10,247,042	0	10,247,042
Surplus Transferred	404,062	6,548,146	467,498	6,559,263
Balance 31 December	38,869,507	38,465,445	39,104,629	38,637,131

b Crown Assets Reserve

	Parent		Consolidated	
	2005	2004	2005	2004
	\$	\$	\$	\$
Balance 1 January	0	10,247,042	0	10,247,042
Transferred to Retained Earnings	0	-10,247,042	0	-10,247,042
Balance 31 December	0	0	0	0
Balance of General Equity 31 December	38,869,507	38,465,445	39,104,629	38,637,131

6 Asset Revaluation Reserve

	Parent		Consolidated	
	2005	2004	2005	2004
	\$	\$	\$	\$
Balance 1 January	9,439,508	378,504	9,439,508	378,504
Net Revaluation of Assets	-692,470	9,061,004	-692,470	9,061,004
Balance 31 December	8,747,038	9,439,508	8,747,038	9,439,508

An adjustment was made to the valuations of two properties to reflect market based valuations.

The reserve comprises revaluations in the following classes of assets:

	Parent		Consolidated	
	2005	2004	2005	2004
	\$	\$	\$	\$
Land	4,424,251	4,707,903	4,424,251	4,707,903
Improvements	4,322,787	4,731,605	4,322,787	4,731,605
Balance 31 December	8,747,038	9,439,508	8,747,038	9,439,508

7 Accounts Receivable

	Parent		Consolidated	
	2005	2004	2005	2004
	\$	\$	\$	\$
Trade Debtors	883,863	836,030	890,038	836,030
Less Provision for Doubtful Debts	-27,971	-58,101	-27,971	-58,101
	855,892	777,929	862,067	777,929
Other Amounts Receivable	411,172	177,129	411,172	177,996
Total	1,267,064	955,058	1,273,239	955,925

8 Investments

	Parent		Consolidated	
	2005	2004	2005	2004
	\$	\$	\$	\$
Short Term	5,000,000	9,000,000	5,319,000	9,269,000
Total	5,000,000	9,000,000	5,319,000	9,269,000

a Current Portion

	Parent		Consolidated	
	2005	2004	2005	2004
	\$	\$	\$	\$
ANZ Bank	2,000,000	1,500,000	2,000,000	1,500,000
ASB Bank	2,000,000	3,000,000	2,000,000	3,000,000
BNZ	0	3,000,000	0	3,000,000
KiwiBank	1,000,000	0	1,000,000	0
National Bank of New Zealand	0	1,500,000	319,000	1,769,000
Total	5,000,000	9,000,000	5,319,000	9,269,000

b Interest Rates

The weighted average effective interest rates on current investments were:

	Parent		Consolidated	
	2005	2004	2005	2004
	\$	\$	\$	\$
Weighted average effective interest rate				
Short Term Deposits	7.42%	6.71%	7.41%	6.68%

c Repricing Maturities

	Less Than 6 Months	Less Than 6 Months
Short Term Deposits	5,000,000	5,319,000

9 Inventories

	Parent		Consolidated	
	2005	2004	2005	2004
	\$	\$	\$	\$
Materials and Stores	8,024	12,720	8,024	12,720
Goods for Resale	61,561	68,926	61,561	68,926
Total	69,585	81,646	69,585	81,646

10 Accounts Payable

	Parent		Consolidated	
	2005	2004	2005	2004
	\$	\$	\$	\$
Trade Creditors	2,023,255	4,144,960	2,025,319	4,144,960
Other Accounts Payable	245,329	96,862	245,329	98,888
Total	2,268,584	4,241,822	2,270,648	4,243,848

11 Employee Entitlements

	Parent		Consolidated	
	2005	2004	2005	2004
	\$	\$	\$	\$
Annual Leave	1,224,282	917,487	1,224,282	917,487
Long Service Leave	36,359	27,784	36,359	27,784
Total	1,260,641	945,271	1,260,641	945,271
Current	1,224,282	917,487	1,224,282	917,487

12 Special Accounts

Special Accounts represents funds held by Whitireia Community Polytechnic on behalf of others and funds provided to Whitireia Community Polytechnic by various organisations for specific projects.

	Parent			Consolidated		
	2005	2005	2005	2004	2005	2004
	Receipts	Payments	Balance	Balance	Balance	Balance
	\$	\$	\$	\$	\$	\$
Homestay Trust	159,391	159,391	0	0	0	0
Whitireia International Homestay Trust	138,414	133,229	28,931	23,746	28,931	23,746
Student Insurance	198,955	185,097	20,099	6,241	20,099	6,241
Study Skills Booklet	0	0	21,518	21,518	21,518	21,518
Activities Account	18,277	18,463	6,219	6,405	6,219	6,405
Diploma Commissions	4,644	8,677	0	4,033	0	4,033
Whitireia Foundation	0	0	0	0	122,697	122,696
Other Accounts	19,689	30,323	9,588	20,222	9,588	20,222
	539,370	535,180	86,355	82,165	209,052	204,861

13 Property, Plant and Equipment

	Parent and Consolidated					
	2005			2004		
	Cost / Valuation	Accumulated Depreciation	Net Book Value	Cost / Valuation	Accumulated Depreciation	Net Book Value
\$	\$	\$	\$	\$	\$	
Land:						
Crown	5,992,215	0	5,992,215	6,194,000	0	6,194,000
Polytechnic	2,436,133	0	2,436,133	2,518,168	0	2,518,168
Buildings:						
Crown	1,857,315	56,045	1,801,270	1,857,315	0	1,857,315
Polytechnic	14,921,259	276,177	14,645,082	9,152,497	0	9,152,497
Building Services:						
Crown	523,843	24,995	498,848	474,843	0	474,843
Polytechnic	5,191,148	247,690	4,943,458	4,705,567	0	4,705,567
Building Fitout	8,670,130	805,697	7,864,433	7,307,720	0	7,307,720
Artwork	28,226	0	28,226	26,198	0	26,198
Computers	7,998,181	5,532,872	2,465,309	6,932,388	4,197,303	2,735,085
Furniture & Fittings	1,249,203	548,848	700,355	1,178,411	451,068	727,343
Library Collection	1,758,845	1,177,339	581,506	1,493,536	1,017,444	476,092
Minor Equipment	545,273	476,729	68,544	542,464	418,209	124,255
Motor Vehicles	351,853	203,859	147,994	298,485	178,600	119,885
Office Equipment	278,502	173,568	104,934	253,690	165,044	88,646
Teaching Equipment	1,974,576	1,292,569	682,007	1,711,728	1,194,936	516,792
Leasehold Improvements	724,414	224,674	499,740	176,487	112,233	64,254
Communications System	581,571	474,240	107,331	498,913	462,732	36,181
Plant & Machinery	505,932	215,525	290,407	437,516	184,724	252,792
Roads	693,273	13,460	679,813	696,832	0	696,832
Landscaping	631,028	0	631,028	0	0	0
Signs	104,260	33,926	70,334	41,383	23,157	18,226
Work in Progress	522,170	0	522,170	5,036,120	0	5,036,120
Total	57,539,351	11,778,213	45,761,137	51,534,261	8,405,450	43,128,811

14 Related Party Information

Crown/Government

Whitireia Community Polytechnic is a wholly owned entity of the Crown. The Government influences the roles of Whitireia Community Polytechnic as well as being a significant source of revenue.

Whitireia Community Polytechnic enters into transactions with Government Departments and Crown agencies on an arm's length basis and where those parties are only acting in the course of their normal dealings with the institution. These transactions are not separately disclosed because of the volume of the transactions and because the transactions are conducted on an arm's length basis in the normal course of business.

Inter-Group

All members of the group are considered to be related parties of Whitireia Community Polytechnic. This includes Whitireia Foundation.

There are no other related party transactions.

15 Financial Instruments

Whitireia Community Polytechnic is party to financial instrument arrangements as part of its every day operations. These financial instruments include Bank Accounts, Bank Deposits, Accounts Receivable, Accounts Payable and Term Borrowings, and are recognised in the Statement of Financial Position.

Credit Risk

Whitireia Community Polytechnic has a minimal credit risk in its holdings of various financial instruments. These instruments include cash, bank deposits and accounts receivable.

The institution places its investments with institutions that have a high credit rating. It also reduces its exposure to risk by limiting the amount that can be invested in any one institution. Whitireia Community Polytechnic believes that these policies reduce the risk of any loss that would arise from its investment activities.

Accounts receivable are stated at the estimated realisable value after providing for amounts not considered recoverable. There is no significant concentration of credit risk for accounts receivable.

Currency Risk and Interest Rate Risk

The interest rate on a bank overdraft is 27.45% per annum (2004: 26.35%). This is a floating rate set by the bank. Apart from this Whitireia Community Polytechnic has no significant exposure to currency risk and interest rate risk on its remaining financial assets and liabilities.

16 Segmental Information

Whitireia Community Polytechnic operates predominantly in one industry (tertiary education) and in four geographical areas with a campus in Porirua City, Kapiti Campus at Paraparaumu, Wellington City Campus in Wellington and Whitireia International in Auckland.

17 Councillors' Fees and Benefits

	2005	2004
	\$	\$
Arthur T	1,800	2,200
Bailey K	0	200
Bradley H L	2,200	800
Douglas K G	0	200
Dunkerton M S	0	1,800
Fortuin G	400	0
Haggerty C E	600	0
Henderson G J	2,400	0
Kirk-Burnnand C	0	8,750
Manderson M A	1,200	2,200
Mareko C	1,600	400
Nichols A D	1,600	1,000
Radley J M	0	1,000
Rangi C J	1,800	0
Sharman D R	19,500	13,125
Snively S	9,750	5,655
Wilkinson R K	2,200	2,000

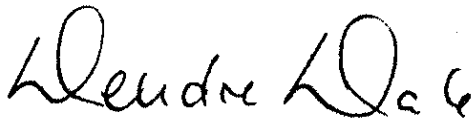
MANAGEMENT STATEMENT

In terms of the Public Finance Act 1989, we hereby certify that:

- 1 We have been responsible for the preparation of these financial statements and the judgements used therein: and
- 2 We have been responsible for establishing and maintaining a system of internal control designed to provide reasonable assurance as to the integrity and reliability of financial reporting, and
- 3 We are of the opinion that these financial statements fairly reflect the financial position and operations of this Polytechnic for the year ended 31 December 2005.



Chairperson of Council



Chief Executive



Director, Business and Corporate Services

AUDIT REPORT
TO THE READERS OF
WHITIREIA COMMUNITY POLYTECHNIC AND GROUP'S
FINANCIAL STATEMENTS
FOR THE YEAR ENDED 31 DECEMBER 2005

The Auditor-General is the auditor of Whitireia Community Polytechnic (the Polytechnic) and group. The Auditor-General has appointed me, Stephen Lucy, using the staff and resources of Audit New Zealand, to carry out the audit of the financial statements of the Polytechnic and group, on his behalf, for the year ended 31 December 2005.

Unqualified opinion

In our opinion the financial statements of the Polytechnic and group on pages 10 to 50:

- comply with generally accepted accounting practice in New Zealand, and
- fairly reflect:
 - the Polytechnic and group's financial position as at 31 December 2005
 - the results of operations and cash flows for the year ended on that date, and
 - the service performance achievements measured against the performance targets adopted for the year ended on that date.

The audit was completed on 26 April 2006, and this is the date at which our opinion is expressed.

The basis of our opinion is explained below. In addition, we outline the responsibilities of the Council and the Auditor, and explain our independence.

Basis of opinion

We carried out the audit in accordance with the Auditor-General's Auditing Standards, which incorporate the New Zealand Auditing Standards.

We planned and performed the audit to obtain all the information and explanations we considered necessary in order to obtain reasonable assurance that the financial statements did not have material misstatements whether caused by fraud or error.

Material misstatements are differences or omissions of amounts and disclosures that would affect a reader's overall understanding of the financial statements. If we had found material misstatements that were not corrected, we would have referred to them in our opinion.

The audit involved performing procedures to test the information presented in the financial statements. We assessed the results of those procedures in forming our opinion.

Audit procedures generally include:

- determining whether significant financial and management controls are working and can be relied on to produce complete and accurate data
- verifying samples of transactions and account balances
- performing analyses to identify anomalies in the reported data
- reviewing significant estimates and judgements made by the Council
- confirming year-end balances
- determining whether accounting policies are appropriate and consistently applied, and
- determining whether all financial statement disclosures are adequate.

We did not examine every transaction, nor do we guarantee complete accuracy of the financial statements.

We evaluated the overall adequacy of the presentation of information in the financial statements. We obtained all the information and explanations we required to support our opinion above.

Responsibilities of the Council and the Auditor


The Council is responsible for preparing financial statements in accordance with generally accepted accounting practice in New Zealand. Those financial statements must fairly reflect the financial position of the Polytechnic and group as at 31 December 2005. They must also fairly reflect the results of its operations and cash flows and service performance achievements for the year ended on that date. The Council's responsibilities arise from the Public Finance Act 1989.

We are responsible for expressing an independent opinion on the financial statements and reporting that opinion to you. This responsibility arises from section 15 of the Public Audit Act 2001 and the Public Finance Act 1989.

Independence

When carrying out the audit we followed the independence requirements of the Auditor-General, which incorporate the independence requirements of the Institute of Chartered Accountants of New Zealand.

Other than the audit, we have no relationship with or interests in the Polytechnic or its subsidiary.


S B Lucy
Audit New Zealand
On behalf of the Auditor-General
Wellington, New Zealand

Matters relating to the electronic presentation of the audited financial statements

This audit report relates to the financial statements of Whitireia Community Polytechnic for the year ended 31 December 2005 included on the Whitireia Community Polytechnic web-site. The Whitireia Community Polytechnic Council is responsible for the maintenance and integrity of the Whitireia Community Polytechnic web site. We have not been engaged to report on the integrity of the Whitireia Community Polytechnic web site. We accept no responsibility for any changes that may have occurred to the financial statements since they were initially presented on the web site.

The audit report refers only to the financial statements named above. It does not provide an opinion on any other information which may have been hyperlinked to/from these financial statements. If readers of this report are concerned with the inherent risks arising from electronic data communication they should refer to the published hard copy of the audited financial statements and related audit report dated 26 April 2005 to confirm the information included in the audited financial statements presented on this web site.

Legislation in New Zealand governing the preparation and dissemination of financial statements may differ from legislation in other jurisdictions.

SPECIAL SUPPLEMENTARY GRANTS

Statement of Revenue and Expenditure for the period 1 January to 31 December 2005

MĀORI LEARNERS	2005		2004	
	Revenue	Revenue	Revenue	Expenditure
	\$	\$	\$	\$
	78,018		73,786	
Personnel		84,010		68,251
Operating		29,778		8,715
Admin Overheads		2,500		2,500

PACIFIC LEARNERS	2005		2004	
	Revenue	Expenditure	Revenue	Expenditure
	\$	\$	\$	\$
	64,637		61,128	
Personnel		73,710		58,248
Operating		24,364		6,896
Admin Overheads		2,500		2,500

SPECIAL EDUCATION (TAUTOKO EDUCATION CENTRE)	2005		2004	
	Revenue	Expenditure	Revenue	Expenditure
	\$	\$	\$	\$
	53,778		53,344	
Personnel		54,888		53,289
Operating		12,038		11,990
Admin Overheads		2,500		2,500

SPECIAL EDUCATION (NEW DIRECTIONS & WORK SKILLS)	2005		2004	
	Revenue	Expenditure	Revenue	Expenditure
	\$	\$	\$	\$
	48,579		48,579	
Personnel		80,441		78,098
Operating		-		-
Admin Overheads		2,500		2,500

TERTIARY STUDENTS WITH DISABILITIES	2005		2004	
	Revenue	Expenditure	Revenue	Expenditure
	\$	\$	\$	\$
	88,259		94,100	
Personnel		105,035		88,661
Operating		17,009		4,720
Admin Overheads		-		-

PROGRAMME ADVISORY COMMITTEES 2005

**FACULTY OF ARTS &
COMMUNICATION****ARTS****Dance (Performing Arts)***Diploma in Performing Arts
(Advanced)**Diploma in Performing Arts
Certificate in Performing Arts*Bob Cater
*Porirua Community Arts Council*Marie Cribb
*Nae Nae College, Lower Hutt*Mark Kairua
*Porirua City Council*Caroline Mareko
*Ministry of Education, Wellington*Lynne Pringle
*DANZ Secondary School Education
Officer, Wellington*Dolly Seow-Ganeson
*NZ Trade and Enterprise, Wellington*Paora Ropata
*Atiawa Toa, Lower Hutt*Frances Rangihuna
*Victoria University, Wellington*Deirdre Tarrant
*Footnote Dance Company, Wellington***Design and Multimedia***Diploma in Digital Design and
Multimedia**National Diploma in Design (Level 5)
Graphic Strand**National Certificate in Electronic
Multimedia (Advanced)**National Certificate in Electronic
Multimedia (Levels 3 and 4)**Certificate in Digital Media
Certificate in Digital Design
Certificate in Desktop Publishing for
Print and the Web*Katherine Fitzgerald
*Blueskin Films Ltd, Wellington.*Kenneth Gilliam
*Norse Advertising Design, Wellington*Lian Hathaway
*E-port, Wellington*Michelle Knight
*Spark Talent, Wellington*Dickson Lentell
*Wakefields Digital Colour Solutions
Ltd, Wellington*Campbell McDuff
*Neo Gine Communication Group,
Wellington*Rex McIntosh
*Click Suite, Wellington*Lynn Peck
*Central Media Ltd, Wellington*Collin Phillips
*Base Two Ltd, Wellington*Jack Yan
*Jack Yan & Associates, Wellington***Drama (Stage and Screen)***Diploma in Applied Stage and Screen
Arts (Advanced)
Diploma in Stage and Screen Arts*Pip Byrne
*Tutor/Writer, Wellington*Anton Carter
*Advisor – Music, Creative NZ,
Wellington*Richard Finn
*New Zealand College of Performing
Arts, Porirua*Ruth Franks
*Avalon Film and Television School,
Lower Hutt*Amanda Hereaka
*Taku Rua, Wellington*Colin Holloway
*Former Student, Kapiti*Libby Justice
*Wellington Actors Agency*Mark Kairua
*Porirua City Council*Robyn Payne
*Theatre Professional, Wellington*Kieran Stone,
*New Zealand College of Performing
Arts, Porirua*Susan Wilson
*Circa Theatre, Wellington***Music***National Diploma in Music (Level 7)
Diploma in Rock, Jazz and
Commercial Music
Certificate in Rock, Jazz and
Commercial Music
Certificate in Foundation Music
Certificate in DJ Music*Paul Baines
*Business Consultant, Wellington*Roger Booth
*New Zealand Qualifications Authority,
Wellington*Paul Dyne
*Massey University, Wellington*Neil Maddever
*Sound Engineer, Wellington*Ray Mercer
*Māori Musician, Wellington*Neil Worboys
*Principal, Clyde Quay School,
Wellington*Fraser Tahau
*Professional Musician, Levin*Rob Winch
*Musician/Advertising, Wellington***Photography***Certificate in Advanced Photography
Certificate in Practical Photography*Stephen A'Court
*Stephen A'Court Photography,
Wellington*Chris Coad
*Freelance Photographer, Wellington*Stanley Garmonsway
*Photographic Retailer, Wellington*Glen Howey
*Tutor/Freelance Documentary
Photographer, Wellington*Murray Lloyd
*Murray Lloyd Photography, Wellington*Trish Pointon
*Photographer, Mana*Mel Phillips
*Mel Phillips Photography, Raumati***Visual Arts***Diploma in Visual Arts (Advanced)
National Diploma in Visual Arts
(Advanced)(Level 7)**Diploma in Visual Arts
National Diploma in Visual Arts
(Level 6)**Diploma in Jewellery Design
National Certificate in Visual Arts
(Level 4)**Certificate in Visual Arts
Certificate in Mastercraft*Kivani Moriarty
*Pātaka, Porirua Museum of Arts &
Cultures*Eric Ngan
Te Papa National Museum, Wellington

Gary Shuker
Bishop Viard College, Porirua

Helen Smith
Porirua Community Arts Council

Margaret Tolland
Pātaka, Porirua Museum of Arts & Cultures

COMMUNICATION & MEDIA STUDIES

Creative Writing

Diploma in Creative Writing (Advanced Body of Work)
Diploma in Creative Writing (Applied Project)
Diploma in Creative Writing

Tusiata Avia
Writer, Wellington

Kilian De Lacy
NZ Society of Authors, Porirua

Catherine Fitzgerald
Blue Skin Films, Wellington

Mandy Hager
Writer, Wellington

John Huria
Huia Publishers, Wellington

Janine McVeagh
Northland Polytechnic, Rawene

Karen Ross
NZ Book Council, Wellington

Graeme Tetley
Writer/Script Consultant, Wellington

English Language

Certificate in Intensive General English (Academic)
Certificate in Intensive General English (Advanced)
Certificate in Intensive General English (Upper Intermediate)
Certificate in Intensive General English (Pre-Intermediate)
Certificate in Intensive General English (Intermediate)
Certificate in Intensive General English (Elementary)
Certificate in Intensive General English (Beginner)
Certificate in Intensive English for IELTS
Certificate in English for Further Studies

Lynda Eves
New Settlers Services, Porirua

Ariadne Fountain
Porirua Language Project

Ellanor Henry
Wellington Institute of Technology, Lower Hutt

Reverend Perema Leasi
P.I.P.C Church Minister, Porirua

Reverend Setu Masina
Pacific Church Minister, Porirua.

Lorraine Sherlock
Aotea College, Porirua

Bounyang Thiphakone
Local Ethnic Community Advisor, Porirua

Journalism

National Diploma in Journalism
National Certificate in Journalism (Introductory)

Clive Conland
Radio/Broadcasting, Wellington

Bernadette Courtney
'The Dominion Post', Wellington

Matt Dallas
'Kapi Mana' News, Porirua

Geoff Davies
'Chartered Accountant' Journal, Wellington

Nigel Evans
CWA New Media, Wellington

Diane Joyce
Kapiti Newspapers

Queenie Rikihana-Hyland
Independent Consultant, Otaki

Jim Tucker
NZ Journalists Training Organisation, Wellington

Fa'amatuainu Tino Pereira
Radio/Pacific Journalist

David Venables
Radio New Zealand, Wellington

Rachel Walsh
Capital Community Newspapers, Petone

Publishing

Diploma in Publishing

Fergus Barrowman
Victoria University Press, Wellington

Robbie Burton
Craig Potton Publishing, Nelson

Elizabeth Caffin
Auckland University Press

Linda Henderson
Booksellers NZ, Wellington

Ann Mallinson
Mallinson-Rendel Publishers, Wellington

FACULTY OF BUSINESS AND INFORMATION TECHNOLOGY

BUSINESS AND MANAGEMENT

Business Management

Bachelor of Applied Business Studies
New Zealand Diploma in Business

Diploma in Accounting
Diploma in HR Management
Diploma in Management
Diploma in Marketing
Diploma in Not for Profit Management
NZIM Certificate in Management
NZIM Small Business Entrepreneurs Certificate
Certificate in Small Business Management
Certificate in Public Sector Knowledge

Batch Hales
NZIM, Wellington

Liz Kelly
Kelly Hygiene Ltd, Porirua

Ian McDonald
Change Training, Wellington

David Miller
Vantage Consulting Group, Wellington

Mandy Natusch
Business Porirua

John Sauvao
Westpac, Wellington

COMPUTING & INFORMATION TECHNOLOGY

Computing and Information Technology

Bachelor of Information Technology
Diploma in Information and Communications Technology
National Diploma in Computing (Support) (Level 5)
Certificate in Computing
Introduction to Computers

Mark Carroll
Microsoft NZ Ltd, Wellington

Rick Hook
gen-i Ltd, Wellington

Jade Johnson
NZ Totalisator Agency Board, Petone

Callum Katene
NZice, Tawa

Captain Roger MacDonald
NZ Defence Force, Porirua

Cliff Pratt
Datacom, Tawa

Ian Prisk
Black Coffee Software, Wellington

Brian Rowe
Price Waterhouse Coopers, Wellington

Michael Stevens
MS & Associates, Porirua

Dennis Sharman
Sharman Consulting Ltd, Tawa

FACULTY OF HEALTH, EDUCATION AND SOCIAL SCIENCES

FOUNDATION EDUCATION

Foundation Education

Certificate in Foundation Education (with strands in Business, Health Science and Social Sciences)

Jasna Antunovich
Multicultural Centre, Wellington

Anne Brinkman
Massey University, Wellington

Mary Jansen
Nurse/ Former Student, Porirua

Liz Richardson
Victoria University of Wellington

Aiga Tuiletoa
Former Student, Wellington

Certificate in New Directions Certificate in Work Skills

Garry Braddock
Community Representative, Porirua

Val Bridge
Special Education, Porirua

Jane Exley
Workmates, Porirua

Brian McMahon
Special Education, Porirua

Greg Sayer
Capital Support, Porirua

Christine Vaughan-Dawkes
Paraparaumu College

NURSING & HEALTH SCIENCES

Mental Health

Postgraduate Certificate in Forensic Psychiatric Care

Postgraduate Certificate in Nursing (Mental Health)

Graduate Diploma in Psychiatric Practice

Dr Helen Bichan
Honorary Member, Porirua

Lewis Cate
*Mental Health Service, Capital & Coast
District Health Board, Wellington*

Kaye Carncross
*Capital & Coast District Health Board,
Wellington*

Tony Dal Din
Hutt Valley District Health Board

Nathan Davis
*Mental Health Service, Nelson
Marlborough Health Service*

Nigel Fairley
*Forensic Service, Capital & Coast
District Health Board, Porirua*

Deirdre Florence
*Te Whare o Rangiora, Capital & Coast
District Health Board, Porirua*

Phillip Galley
*Te Puna Waiora, Taranaki District
Health Board, New Plymouth*

Sarah Gordon
Case Consulting, Wellington

Shelley Gunther
*Te Whare Ahuru, Hutt Valley District
Health Board*

Sarah Hollenback
Te Awhina, Good Health Wanganui

Aareta Koopu
Forensic Service, Porirua

Shayola Koperu
*Raumoko, Capital & Coast District
Health Board, Porirua*

Chris McCoard
*Mental Health Service, Good Health
Wanganui*

Beverly Miller
*Forensic Services, Henry Bennett
Centre, Hamilton*

Karin Nesdale
*Mental Health Services, Mid Central
Health, Palmerston North*

Reg Orovwuje
*Forensic Services, Capital & Coast
District Health Board, Porirua*

Dianne Sadler
*Mental Health Service, Capital &
Coast District Health Board, Porirua*

Oketopa Shepherd
*Forensic Health Services, Capital &
Coast District Health Board, Porirua*

Jeff Symonds
*Forensic Services, Health Waikato,
Hamilton*

Eileen Weekly
*Mental Health Service, Capital &
Coast District Health Board, Porirua*

National Certificate in Mental Health (Mental Health Support Work)(L 4)

Lewis Cate
*Capital & Coast District Health Board,
Wellington*

Stephanie Cairns
Take 5, Lower Hutt

Bill Cole
Club House, Wellington

Collette Ellison-Hack
Timata Hou, Porirua

Tevita Finau
*Vakaola Pacific Community Health,
Porirua*

Russell Fitzgerald
Independent Consultant, Wellington

Trish Fitzgerald
Independent Consultant, Wellington

Michael Fitzsimmons
Glenbrook Lodge, Whitby

Deirdre Florence
Papatuanuku, Porirua

Cecilio Fotu
Vakaola, Porirua

Tearanga Hakiwai
Te Roopu Whakapakari Ora Trust

Jutta Jones
*Mana Community Enterprise Inc,
Porirua*

Makere Love
Time Out, Wainuiomata

Paul Moles
Te Mata Hau, Porirua

Pera Ngere Ngere
Qnique, Lower Hutt

Gary Platz
Wellink, Wellington

Cheri Ratapu-Foster
Māori Development, Wellington

Diane Sadler
F-Annexe, KRIDS, Porirua

John Tovey
Roopu Manager, Porirua

Ie'u Tuioti
Maninoa Trust, Porirua

Karyn Walker
Matahauariki, Porirua

Nursing

Bachelor of Nursing

Anne Allan-Moetaua
Ministry of Health, Porirua

Irene Calbert
Hutt Valley District Health Board

Dianne Callinicos
Regional Public Health, Lower Hutt

Kaye Carncross
*Capital & Coast District Health Board,
Wellington*

Tony Dal Din
Hutt Valley District Health Board

Jan Duke
Victoria University of Wellington

Margaret Faulkner
Independent Advisor, Porirua

Theresa Fowler
Regional Public Health, Lower Hutt

Beryl Harris
*Occupational Health Nurses, Upper
Hutt*

Sheryl Hunt
Wellington Hospital

Cheryle Moss
Victoria University of Wellington

Dr Jan Pearson
Plunket National Office, Wellington

Suzanne Rolls
NZ Nursing Organisation, Wellington

Rachel Searle
*Capital & Coast District Health Board,
Wellington*

Bachelor of Nursing (Pacific)

Anne Allan-Moetaua
Ministry of Health, Porirua

Merianne Betham
*Capital & Coast Health District Health
Board, Lower Hutt*

Rita Erika
*Capital & Coast District Health Board,
Porirua*

Folole Esera
Health Pasifica, Porirua

Tevita Finau
*Vakaola Pacific Community Health,
Porirua*

Ida Isa'ako
Pacific Health Services Porirua

Sipaia Kupa
*Capital & Coast District Health Board,
Porirua*

Kupa Kupa
*Tūmai Mō Te Iwi/Wellington
Independent Practice Association*

Faye Logovae
*Mental Health Services, Hutt Valley
District Health Board*

Maria Millen
Kemp Home & Hospital, Porirua

Lee Pearce
*Pacific Support Services, Capital &
Coast Health District Health Board,
Wellington*

Fuimaono Karl Pulotu-Endermann
*Capital & Coast Health District Health
Board, Wellington*

Iunita Vaofusi
Petone Union Health, Lower Hutt

Kawa Whakaruruhau

Bernadette Baker
Maraeroa Health Clinic, Waitangirua

Zep Cole
Former Student, Lower Hutt

Yvonne Dolman
Maraeroa Health Clinic, Waitangirua

Flo Gardiner
*Te Whare o Rangitūhi, Kenepuru
Hospital*

Sipia Kupa
Assessment Team, Porirua Hospital

Hineroa Hakiāha
Mental Health Commission, Wellington

Rose McEldowney
Victoria University of Wellington

Anaru Moeau
*Te Whare Marie, Capital & Coast
District Health Board*

Sharon Morunga
Plunket National Office, Wellington

Gaylene O'Dowd
Maraeroa Health Clinic, Waitangirua

Sharlene Olsen
Honary Member, Porirua

Leanne Ormsby
Maraeroa Health Clinic, Waitangirua

Sharon Reid
*Kokiri Marae Preventative Health
Clinic, Lower Hutt*

Fred Tipa
Former Student, Porirua

Maitera Tutahi
Diabetes Nurse Educator, Wellington

Robyn Wichman
Porirua Union Health

**Postgraduate Certificate in Hospice
Palliative Care**

Dr Margaret Connor
Honorary Member, Wellington

Ann Denton
Hospice New Zealand, Havelock North

Suzanne Hammond
Te Omanga Hospice, Lower Hutt

Julie Maher
Te Omanga Hospice, Lower Hutt

Ann Martin
Hospice New Zealand, Wellington

Dr Margaret Martin
Victoria University of Wellington

Monica O'Reilly
Capital & Coast District Health Board

Kate Reid
*Hospice Palliative Care Education,
Christchurch*

Gaye Robertson
Mary Potter Hospice, Wellington

Anne Schumacher
Te Hopai Hospital, Wellington

Dr Lindsay Tanne
Te Omanga Hospice, Upper Hutt

**Postgraduate Certificate in Primary
Health Care Specialty Nursing**

Gill Acorn
*Youth Health Nurse Specialist, Lower
Hutt*

Erin Beatson
Plunket National Office, Wellington

Professor Jan Duke
Victoria University of Wellington

Catherine Fowler
*Tresillian Family Care Centres, NSW
Australia*

Eldred Gilbert
Capital & Coast District Health Board

Michelle Halford
Hutt Valley District Health Board

Jenny Hugtenburg
Hutt Valley District Health Board

Anne Lensen
Hutt Valley District Health Board

Chris Millar
NZ Nursing Organisation, Wellington

Lianne Ormsby
Maraeroa Health Clinic, Waitangirua

Linda Polaschek
Plunket National Office, Wellington

Martha Rice
Hutt Valley District Health Board

Meryl Ryan
Māori Clinical Educator, Auckland

Dianne Stevens
Practice Nurse, Porirua

Paramedics

**Bachelor of Health Science
(Paramedic)**

John Britton
Wellington Free Ambulance

Stephanie Currie
Graduate, Paraparaumu

Jackie Davies
Māori Health Unit, Wellington

Helen Dunn
Pharmacist, Porirua

Sarah Hoyle
Wellington Free Ambulance

Christine Randall
Wellington Free Ambulance

Pete Roe
Wellington Free Ambulance

Peter Van Dijk
Wellington Free Ambulance

Perioperative

**Postgraduate Certificate in
Perioperative Specialty Nursing**

Collette Breton
Hutt Valley District Health Board

Julia Catzburg
Wakefield Hospital, Wellington

Susan Garthwaite
Hutt Valley District Health Board

Mary Ann Johnson
Medtra NZ Ltd, Lower Hutt

Jenny Keene
Hutt Valley District Health Board

Chrissy Neilsen
Care Direct, Wellington

Carol Robertson
Hutt Valley District Health Board

Dorothy Shaw
Bowen Hospital, Wellington

Carol TiaTia
Wakefield Hospital, Wellington

Myra Wilson
Medtra NZ Ltd, Wellington

SOCIAL AND COMMUNITY SERVICES

National Certificate in Tamariki Ora – Well Child Services

Anna Anderson
Raukura Hauora O Tainui, Auckland

Gladys Bedggood
Plunket Kaiāwhina, Auckland

Megan Cameron
Plunket Clinical Educator, Hamilton

Clare Ivory
Community Karitane, Auckland

Brigid Jenkinson
Clinical Educator, Christchurch

Matewiki Karehana
Ngāti Whatua O Orakei, Auckland

Judy King
Ngāti Whatua O Orakei, Auckland

Lydia Kingi
Papakura Marae, Auckland

Anna Liki
Pacific Clinical Educator, Christchurch

Teeikura Masters
Plunket Kaiāwhina, Auckland

Ripeka Mokaraka
Māori Kaiāwhina Educator, Auckland

Jan Pearson
Plunket Education, Wellington

Paula Perham
Community Karitane, Auckland

Linda Polaschek
Plunket Education, Wellington

Jeff Tukua
Kaumatua, Auckland

Louise Troy
Clinical Leader, Counties Manukau

Te Aomarama Wilson
Māori Caucus Board, Auckland

Social Work

Bachelor of Social Work National Diploma in Social Work (Level 6)

Ross Barber
*Child Youth and Family Services,
Lower Hutt*

Geraldine Clifford
Taeaomanino Social Services Porirua

Lainey Cowan
*Aotearoa New Zealand Association
Social Work, Paekakariki*

Janet Cowper
Volunteer, Porirua

Nicki Edwards
Kemp Home and Hospital, Porirua

Doug Fauchelle
*Child Youth and Family Services,
Paraparaumu*

Joyce Fellon
Barnados Family Support, Lower Hutt

Tevita Finau
*Vakaola Pacific Community Health,
Porirua*

Henrietta Gemmell
Koraunui Marae, Stokes Valley

Lorene Hartley
Porirua City Council

Caroline Herewini
*Women's Refuge Te Whare Tiaki,
Porirua*

Ida Isa'ako
Pacific Health Services Porirua

Gabrielle Karroll
Dare Foundation, Porirua

Carole Kell
Deals Porirua

Natalie Kini
Ora Toa Health Unit, Porirua

Ester Laban
Independent Advisor, Porirua

Ross McCracken
Kapiti Safer Community Council

Janine Olasa
*Te Whare Marie, Capital & Coast
District Health Board, Porirua*

Noreen Palmer
*Te Roopu Awhina Family Start,
Porirua*

Lee Pearce
*Pacific Support Services, Capital &
Coast District Health Board,
Wellington*

Tania Poirrier
IHC Central Region, Mana

Pauline Ramsay
Department of Corrections, Porirua

Cheri Ratapu-Foster
Wellink, Wellington

Margaret Saunders
*Social Work, Capital & Coast District
Health Board, Wellington*

Mate Waewae
*Women's Refuge, Seaview Kokiri,
Lower Hutt*

Youth Work

Certificate in Youth Work (Christian Youth Workers)

Edward Anand
Wellington City Mission

Andy Balcar
Praxis Canterbury, Christchurch

Ross Banbury
*Papanui Youth Development Trust,
Christchurch*

Matt Button
*Northwest Mentoring Trust,
Christchurch*

Chris Casey
Anglican Diocese, Wellington

John Harrington
*Canterbury Youth Workers Collective,
Christchurch*

Carol Jenkins
Te Ora Hou Otautahi, Christchurch

Lloyd Martin
Praxis, Wellington

Michelle McConnell
Praxis National, Christchurch

Faye Molen
Praxis, Wellington

Lucy Read
The Salvation Army, Lower Hutt

Leoan Tiraa
Wesley Porirua

Phil Trotter
Anglican Youth Diocese, Christchurch

Colin Wood
Ilam Baptist Church, Christchurch

Christoph Zintl
South City Church, Christchurch

Diploma in Youth and Community Studies

Fr Frank Bird
Logos Project, Auckland

Mel Dickson
Youth for Christ, Wellington

Paul Mather
Praxis Wellington

Gregg Morris
Baptist Action, Auckland

TEACHER EDUCATION**Early Childhood and Educational Studies****Diploma in Teaching (Early Childhood Education)
Certificate in Early Childhood Education (Introductory)**

Gillian Dodson
Free Kindergarten Association, Wellington Region

Dr Sarah Farquhar
Independent Advisor, Porirua

Diane Fazakerley
Nga Tamariki, Lower Hutt

Pam Hanna
Independent Advisor, Wellington

Suzie MacVicar
Childcare Centre Supervisor, Wellington

Teresa Martin
Best Beginnings Early Learning Centre Ltd, Tawa

Diana Pierce
Chelsea House Early Learning Centre, Raumati

Bronwyn Pullen
Bronwyn's Place Preschool, Porirua

Lynlee Shaw
Te Whare Ako Childcare Centre, Petone

New Zealand National Nanny Certificate

Kate Jones
Number One Nannies, Wellington

Kathie Ross
Harbour City Nanny & Home Help Agency

Early Childhood Bridging Certificate

Tasi Pereira
Community Representative, Porirua

Lolenese Siu
Community Representative, Porirua

Joe Vakalolama
Community Representative, Wellington

**Certificate in Adult Learning & Teaching
Diploma in Adult Learning and Teaching**

Jill Clark
Graduate, Porirua

Alison Viskovic
Massey University, Wellington

FACULTY OF SERVICE INDUSTRIES AND TRADES**BUSINESS AND MANAGEMENT****Business Administration**

**Certificate in Administration
Certificate in Business Administration
Executive Secretarial
Certificate in Business Administration/Computer Applications
Certificate in Call Centre Operations
Certificate in Office Skills/Computing
Certificate in Retail Management
National Certificate First Line Management (Communications and Quality) (Level 3)
National Certificate in Business Administration & Computing (L 2)**

Erica Duff
NZ Police, Porirua

Waka Hapeta
AMPM Calling, Wellington

Dale Hartle
Porirua City Council

Jeanette Hourigan
Independent Advisor, Hutt City

Lio Hunt
Career Services National Office, Wellington

Anne Le'aupepe
Capital and Coast District Health Board, Porirua

Eth Lloyd
Enderby Associates, Waikanae

Sharon Rowell
Corporate Call Centre, Hutt City

Joanne Wilton
Contact Energy, Levin

CATERING AND HOSPITALITY**Catering and Hospitality**

**Certificate in Professional Cookery (incorporating the City and Guilds Certificate and Diploma in Cookery)
Certificate in Professional Kitchen Management (incorporating the City and Guilds Advanced Diploma in Culinary Arts)
Certificate in Café Service
National Diploma in Hospitality Management (Level 5)**

Donni Allum
Oceana Café, Plimmerton

Selena Bermath
Hospitality Standards Institute, Wellington

Troy Herewaka
Independent Advisor, Brooklyn

Pat Mattinson
Hospitality Standards Institute, Wellington

Rob Rangit
Mungavin Blues Restaurant, Porirua

Sarah Rangit
Mungavin Blues Restaurant, Porirua

Murray Reeve
Bucket Tree Restaurant, Tawa

David Richards
Management Training Consultant, Porirua

**SERVICE SECTOR
Beauty and Hairdressing**

**Certificate in Beauty and Hairdressing
Certificate in Beauty Services
Certificate in Beauty Therapy (incorporating the City and Guilds Diploma in Beauty Therapy)
National Certificate in Hairdressing (Salon Support)**

Amanda Anthoson
Woodcote Lodge, Paraparaumu

Maureen Bowring
Hair Craft Centre, Tawa

Pene Burns
Hairdressing Industry Training Organisation, Wellington

Jo Hall
Mystique Beauty Clinic, Wellington

Hamish Gregg
Therapy Wellbeing and Beauty, Wellington

Sarah Hansen
North City Pharmacy, Porirua

Angelique Simmonds
Beauty Therapist, Tawa

Simmons Spackman
Dermal International, Auckland

Larissa Sulzberger
Blue Cactus Hairdressing Ltd, Wellington

Kay Ulrich
Shakina for Hair, Porirua

Floristry and Horticulture**Certificate in Floristry**

Graham Bruce
Porirua City Council Nursery

Claire Clark
Camp Elsdon, Porirua

Mary Dinniss
Horticulture Industry Training Organisation, Wellington

Nigel Homan
Landscaper, Papakowhai

Ben Hoyle
Bluegeko, Paraparaumu

John Muller
Landscape Designer/Writer, Lower Hutt

Murray Opie
Festival Hire, Porirua

Ra Pomare
*Re Runanga o Toa Rangitira
Incorporated, Porirua*

SPORTS AND RECREATION

Outdoor Adventure

Certificate in Outdoor Adventure
Certificate in Outdoor Leadership
(Abseil Instructor)
Certificate in Outdoor Leadership
(Abseil Leadership)
Certificate in Outdoor Leadership
(Alpine Instructor)
Certificate in Outdoor Leadership
(Alpine Leadership)
Certificate in Outdoor Leadership
(Bush Instructor)
Certificate in Outdoor Leadership
(Bush Leadership)
Certificate in Outdoor Leadership
(First Aid Instructor)
Certificate in Outdoor Leadership
(Maintaining Safety)
Certificate in Outdoor Leadership
(Medical Leadership)
Diploma in Outdoor Leadership
(Outdoor First Aid) or (Bush) or
(Alpine) or (Abseil)
Diploma in Outdoor Adventure

Joe Green
*NZ Mountain Safety Council,
Wellington*

Phil Henry
Independent Advisor, Raumatī

TRAVEL AND TOURISM

Travel and Tourism

Certificate in Outdoor Cultural
Tourism (incorporating the City and
Guilds Diploma in Tourism)
Certificate in Tourism
Diploma in International Tourism
Certificate in Travel
Certificate in Travel (Advanced)

Sally Kennedy-Clark
Trilogy Travel, Paraparaumu

Maeleen Owen
Porirua Visitor Centre

Gloria Reynolds
Harvey World Travel, Waikanae

Gaylene Sanderson
Enterprise Coast, Levin

Paul Singh
Enterprise Coast, Levin

TRADES

Automotive

Certificate in Automotive Engineering
Certificate in Automotive Engineering
(Advanced)

David Bowler
Bowler Motors, Porirua

Ian Capewell
Plimmerton Motors

Paul Cooksley
Repco, Porirua

Wayne Dorgan
Wayne Dorgan Auto Repairs, Titahi Bay

Greg Maraku
Porirua

Bill Moffat
Wainuiomata

Nick McGirr
*Motor Training Organisation,
Wellington*

Robert Pauletic
*Land Transport & Safety Authority,
Wellington*

Eoin Stuart
North City Motors, Porirua

Carpentry and Plumbing

Certificate in Carpentry
Certificate in Plumbing, Drainlaying,
Gasfitting and Roofing
Certificate in Trade Skills

Daryl Bradford
*Building & Construction ITO,
Wellington*

Gavin Chambers
Mander Plumbing Ltd, Johnsonville

Duncan McLennan
Mac-Dee Construction Ltd, Papakowhai

Peter Murton
Murton Timbercraft, Porirua

Graham Paton
*Building & Construction ITO,
Wellington*

Brent Tuohy
Tuohy Homes Ltd, Plimmerton

Shane Warren
Porirua Apprentice Trust

Electrotechnology

Certificate in Electrical Engineering

Paul Craven
*Electro Technology Industry Trading
Organisation, Lower Hutt*

Terry Govenlock
Waikanae

Chris Jones
*Telecommunications Education Skills
Standards Organisation, Wellington*

Manu Katene
NZice, Tawa

Tim Scholes
TYCO Services Electrical, Porirua

Stephen Watson
Sinclair Knight Merz Ltd, Wellington

TRANSPORT

Aviation

Certificate in Aviation (Helicopter)
Certificate in Aviation (Helicopter)
Turbine
Certificate in Aviation (Helicopter)
(Advanced)
Diploma in Aviation

Graeme Barrell
Kapiti Air Academy, Paraparaumu

Sandra Boyd
Kapiti Air Academy, Paraparaumu

Eru Brown
Kapiti Air Academy, Paraparaumu

Richard Bull
Kapiti Air Academy, Paraparaumu

Hilary Cunningham
Kapiti Air Academy, Paraparaumu

David Fielding
Kapiti Air Academy, Paraparaumu

Rosalie Greene
Heliflight NZ Ltd, Masterton

Paul Harrison
Kapiti Air Academy, Paraparaumu

Andy McKay
Heliflight NZ Ltd, Masterton

Yvonne Oneroa
Heliflight NZ Ltd, Masterton

Rob Rackliffe
Heliflight NZ Ltd, Masterton

Andrea Stott
Heliflight NZ Ltd, Masterton

Commercial Road Transport

Certificate in Commercial Road
Transport

Darlene Adams
Mana Transport, Porirua

Paul Adams
*NZ Road Transport Association, Lower
Hutt*

Mike Dennehy
*Central Area Road Transport
Association, Lower Hutt*

Alan Eager
Porirua City Towing

Craig Ewans
*NZ Road Transport and Logistics ITO,
Wellington*

Robert Pauletic
*Land Transport & Safety Authority,
Wellington*

Kerry Waddell
Mana Coach Services, Porirua

Russel Walsh
*NZ Road Transport & Logistics ITO,
Wellington*

TE WĀNANGA MĀORI

MĀORI STUDIES

Te Ohu Kōkiri

*Diploma in Māori Land Court Law –
He Kohikohinga a Te Iwi Māori*
*National Certificate in Māori Business
Management: Paerangatiratanga*
*National Certificate in Whakairo
(Tuturu) (Lvl 4)*
National Diploma in Whakairo (Lvl 5)
National Diploma in Whakairo (Lvl 6)
*Diploma in Whakairo (Advanced) –
Toiere Whakairo*
Certificate in Reo Māori - Tēnei Au

*National Certificate in Te Reo Māori –
Te Ara Piko*
National Diploma in Reo Māori (Lvl5)
*National Diploma in Te Reo Māori
(Lvl6)*
Te Hiringa o Te Reo

Hugh Grace
Whakarongotai Marae, Waikanae

Hinemoa Hilliard
*Art Practitioner, Massey University
Wellington*

Pania Houkamau
Horouta Marae, Ramui Heights

Patsy Karauria
Independent Consultant, Newlands

Taku Parai
Ngāti Toa, Porirua

Robert Solomon
*Te Runanga o Toa Rangatira Inc,
Porirua*

Wena Tait
Independent Consultant, Titahi Bay

Tame Te Rangi
Independent Consultant, Porirua

Sophie Tukukino
Te Kura Māori ki Porirua

EQUAL EDUCATIONAL OPPORTUNITIES ACTIVITIES

Enhance opportunities for progress and success of all students

<p>An increasing number of foundation programmes offered to prepare students with low secondary level success for entry to higher level programmes.</p>	<p>A new Diploma in Adult Learning and Teaching delivered in 2005. The existing Certificate includes a focus on providing quality teaching to a diverse range of students.</p>	<p>Special initiatives to provide support to Māori and Pacific students included: Ako Pai student preparation seminars; the Mana Tangata student mentoring programme; two Te Whare Manaaki hui; a Te Whakapumau lecture series.</p>
<p>Procedures in place to ensure that all students are given appropriate information and support.</p>	<p>Māori and Pacific student guidance in career pathways provided. A web-based careers programme made available.</p>	<p>Seven Wānanga on academic and cultural development for nursing students held.</p>
<p>Promotion and strengthening of community and cultural links continued. Regular meetings with Pacific Communities held.</p>	<p>Pacific student forums met regularly.</p>	<p>A Whānau Information Day/Evening hosted in faculties across the polytechnic.</p>
<p>Additional tutors and a mentoring programme provided to support Māori and Pacific students to complete and succeed in their learning.</p>	<p>Kawa Whakaruruhau committee convened regularly to support Bachelor of Nursing programme.</p>	<p>An increasing number of programmes/modules offer late afternoon/early evening classes to enable up skilling of those currently employed in industry.</p>
<p>Additional teaching times and support groups available to students of different ethnicities.</p>	<p>Monthly hui held to support Māori and Pacific students.</p>	<p>Library distance service continues to expand.</p>
<p>Learning support for students continued to assist students with learning difficulties.</p>	<p>Information literacy programme (WILO) updated. Online process developed for student accessibility.</p>	<p>Information Literacy Librarian appointed for user education.</p>
<p>Tutorial assistants appointed to aid students experiencing barriers to progress in their learning.</p>	<p>Whitireia Council and staff are committed to the values of Whitireia, i.e. Integrity, Accountability, Equity, Identity, Responsiveness, Success and Manaaki.</p>	<p>Māori and Chinese librarians are now employed by the polytechnic.</p>
<p>Pre-entry nursing programme continued to increase people's chances of acceptance into the nursing degree.</p>	<p>Continued support for Māori nursing students to attend annual Māori nurses hui.</p>	<p>The code of rights and responsibilities developed jointly by polytechnic staff and Students' Association continues to be used.</p>
<p>Faculty of Service Industries and Trades appointed a Kaiwhina to provide additional pastoral care for Māori and Pacific students during 2005.</p>	<p>Continued provision of free hearing tests for staff and students.</p>	<p>Programme advisory committees continued to ensure community and industry perspectives are considered and implemented into programmes.</p>
<p>Programmes that attract students with responsibility for young children are run as much as possible within primary schools terms.</p>	<p>Identify and review funding availability for students from all ethnicities.</p>	<p>Ministry of Education Research funding sources for "best practice" in teaching reading skills.</p>
<p>Te Wānanga Māori continued to offer courses that are of interest to Māori, and that target Māori.</p>	<p>Successful funding application made to the Tertiary Education Commission, targeted to assist refugee groups gain access to English Language training.</p>	<p>Staff are provided with support and training in the practice of Equal Educational Opportunities by:</p>
<p>Study groups within programmes of study established to assist students' learning continued.</p>	<p>Policy revised to enable Māori to undertake assessments in Māori.</p>	<ul style="list-style-type: none"> • Treaty of Waitangi awareness • Best Practice Management seminars • Advanced Teaching Skill training • Assessment Training • Programme Review Training • Working with International Students
<p>Quality Management System reviewed and revised to ensure students receive high quality learning opportunities and enhance success.</p>	<p>Continuation of self-directed community computing courses.</p>	
<p>Manaaki Tangata mentoring programmes implemented for all Māori students to ensure greater support.</p>	<p>A Senior Academic Advisor was appointed to enhance programme development.</p>	

Ensure equitable access to the polytechnic educational opportunities for all students

Under-represented in the institution student body

Staff in the Faculty of Service Industries and Trades provided support and guidance to ensure younger students are fully catered for within the faculty.

The Faculty of Business and Information Technology offered three study workshops for business and computing students to assist them with their study skills and help them prepare for final exams. These workshops were held in the *Ako Ake Café* at Te Wānanga Māori in order to offer an environment where students could feel comfortable.

An increasing number of programmes provided to appeal to young males – an under represented group at Whitireia Community Polytechnic.

Retention of Te Wānanga Māori to encourage Māori to attend and succeed.

Continued employment of designated Kaiarahi for Ngāti Toa, to implement Ngāti Toatanga.

Māori and Pacific Support Services aim to promote success profiles of Māori and Pacific staff and students through leadership and careers workshops.

Māori and Pacific Support Services provided to ensure that students are supported and encouraged to complete & succeed in their studies.

An increasing number of programmes adapted on-line for flexible delivery to include distant students.

Continued promotion of programmes with a Māori and Pacific focus.

Te Wānanga Māori continued to promote and offer courses of interest to Māori, and that target Māori.

Employment of both Māori and Pacific academic support tutors continued to support students.

Implemented the mentoring and support services of a Māori and Pacific Support Group.

A Careers Day was organised to provide students with information about programmes at Whitireia as well as an insight into student life and activities at the polytechnic and staircasing into employment.

A peer system applied to encourage and support students.

Disadvantaged in terms of their ability to attend the institution.

Council approval granted to offer Fee Scholarships for foundation programmes in 2005.

Fee Scholarships were provided to enable students from all economic groups to undertake tertiary study.

Continuation of re-entry to tertiary education courses and community courses.

Continuation of specifically targeted programmes for people with: *Disabilities* -New Directions, Work skills and Tautoko Centre *English as a Second Language* – Certificates in Intensive English, Certificate in English for Further Studies and ESOL.

Accessibility audit outcome maintained to ensure existing and developing building meet best practice requirements.

Disabled car parks designated at all campuses.

In collaboration with TEC, Whitireia Community Polytechnic provides training and skill improvement for young people under 18 with low qualifications. This offers these young people the opportunity to gain valuable skills to aid them in gaining employment.

A Student Financial Advisor is employed to foster student welfare.

Funds designated for the purchasing of special equipment to support student learning continued.

A Disabilities Co-ordinator employed to assist students with disabilities.

Assistance was provided by the Disabilities Co-ordinator to over 65 students with disabilities, and regularly consulted and liaised with staff and external organisations in attaining quality support.

Ensure programme entry criteria based on course related competencies, and indicative of likely success.

Wheelchair access at all entrances and pathways.

A Curriculum Alignment Co-ordinator (0.5) was appointed and regular meetings held with local secondary schools to enable clear pathways for secondary students into tertiary study. This project aims to encourage school leavers to enrol at the polytechnic.

Students receive assistance through Special Supplementary Grants that provide funding to meet the high level of students needs.

A full-time secondary schools liaison position continued to provide programme information to schools and initiate appropriate responses from the polytechnic via the STAR programmes.

STAR programmes were offered to assist secondary school students to engage in further education.

Regular consultation with staff by the Disability Co-ordinator regarding disability and accommodation matters, and providing advice on more complex issues.

A variety of programmes adapted on-line for flexible delivery to include distant learning students.

Funding support links made with agencies to support students with disabilities.

Disability services action plan used by Campus Plan User Group.